

---

# CONTINUOUS FLOW ICEMAKER

## 1400 - Series Illustrated Parts List

**Released Dater: March 29, 2019**

**Publication Number: 548000109IPL**

**Revision Date: March 29, 2019**

**Revision: A**

Visit the Cornelius web site at <http://ice.cornelius.com> for all your Literature needs.

---

## Notice

The products, technical information, and instructions contained in this manual are subject to change without notice. These instructions are not intended to cover all details or variations of the equipment, nor to provide for every possible contingency in the installation, operation or maintenance of this equipment. This manual assumes that the person(s) working on the equipment have been trained and are skilled in working with electrical, plumbing, pneumatic, and mechanical equipment. It is assumed that appropriate safety precautions are taken and that all local safety and construction requirements are being met, in addition to the information contained in this manual.

This Product is warranted only as provided in Cornelius' Commercial Warranty applicable to this Product and is subject to all of the restrictions and limitations contained in the Commercial Warranty.

Cornelius will not be responsible for any repair, replacement or other service required by or loss or damage resulting from any of the following occurrences, including but not limited to, (1) other than normal and proper use and normal service conditions with respect to the Product, (2) improper voltage, (3) inadequate wiring, (4) abuse, (5) accident, (6) alteration, (7) misuse, (8) neglect, (9) unauthorized repair or the failure to utilize suitably qualified and trained persons to perform service and/or repair of the Product, (10) improper cleaning, (11) failure to follow installation, operating, cleaning or maintenance instructions, (12) use of "non-authorized" parts (i.e., parts that are not 100% compatible with the Product) which use voids the entire warranty, (13) Product parts in contact with water or the product dispensed which are adversely impacted by changes in liquid scale or chemical composition.

## Correct Disposal of this Product



### RECYCLE

This marking indicates that this product should not be disposed with other household wastes throughout the EU. To prevent possible harm to the environment or human health from uncontrolled waste disposal, recycle it responsibly to promote the sustainable reuse of material resources. To return your used device, please use the return and collection systems or contact the retailer where the product was purchased. They can take this product for environmental safe recycling.

## Trademarks and Copyrights

This document contains proprietary information and it may not be reproduced in any way without permission from Cornelius. This document contains the original instructions for the unit described.

CORNELIUS INC  
101 Regency Drive  
Glendale Heights, IL  
Tel: + 1 800-238-3600

Printed in U.S.

## Contact Information

To inquire about current revisions of any documentation or assistance with any Cornelius product, contact:

[www.cornelius.com](http://www.cornelius.com)  
800-238-3600



# TABLE OF CONTENTS

WCC1401-R Panels ..... 1

Refrigeration and Icemaker Assembly Model WCC1401-R ..... 2

Refrigerant and Icemaker Assembly Model WCC1400-rack ..... 3

Front End Assembly Model WCC1401-R Series ..... 4

Front End Assembly Model WCC 1400 Rack Series Chunklets ..... 5

Drop Chute Assembly WCC1401R ..... 6

Drop Chute Assembly WCC1400-Rack ..... 7

Water Control Assembly WCC1401R ..... 8

Water Control Assembly WCC1400-Rack 620054231 ..... 9

Electrical Box Assembly Model WCC1401R 620070338 ..... 10

CR1101 Remote Condenser ..... 12

Line assy CR1101 ..... 13



## WCC1401-R PANELS

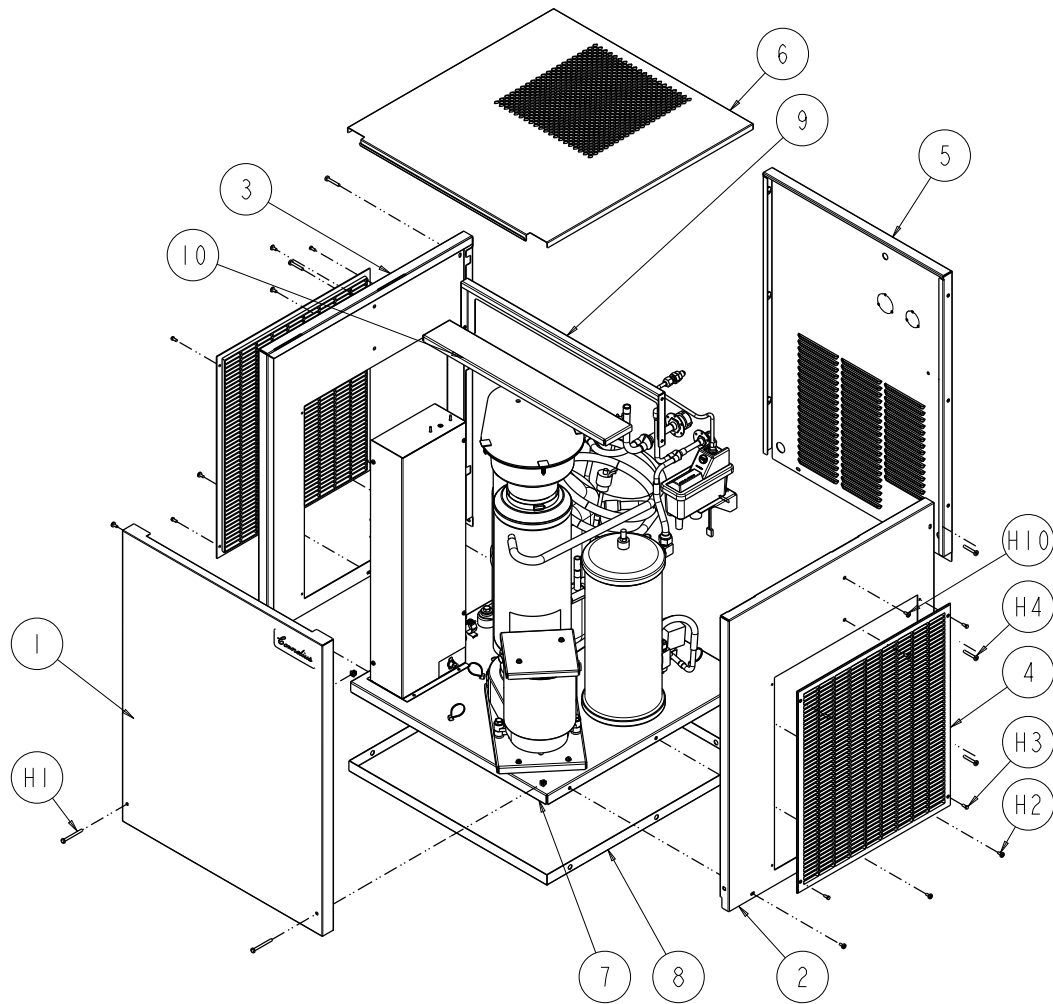
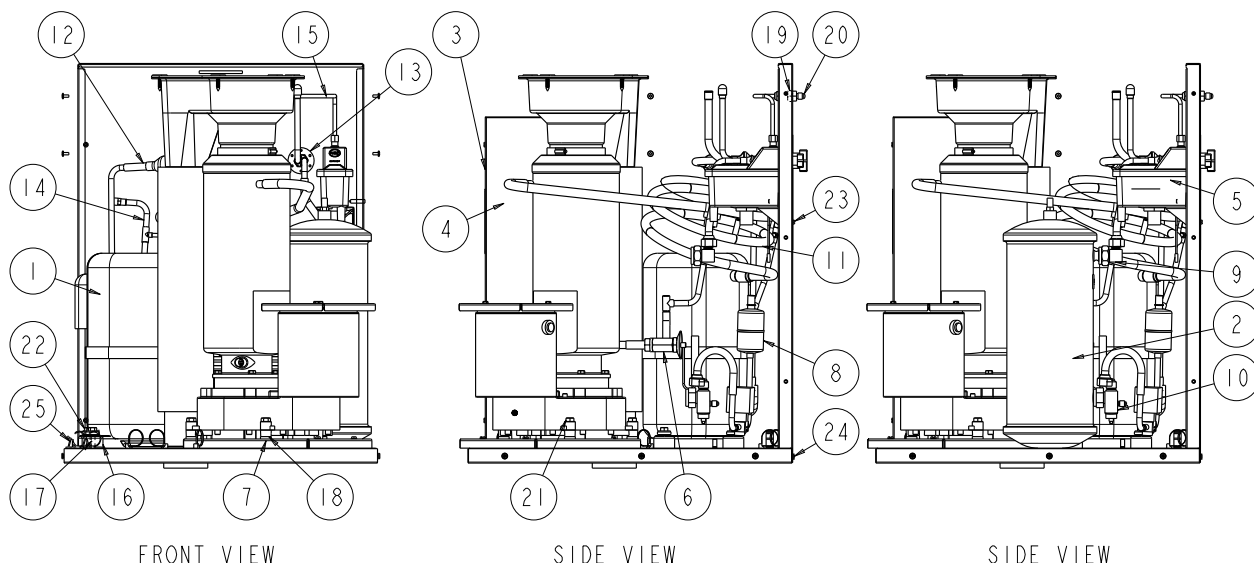


Figure 1

Item No.	Part No.	Description
1	620069616	Panel Front
2	620067734	Panel Right
3	620067735	Panel Left
4	166194001	Grill Plastic BLK 16.8 X 19.22
5	620069614	Panel Back
6	620069615	Panel Top
7	620069511	Panel Base
8	620069893	Cover Base Plate
9	620070791	Brkt Side Panel Support
10	620071292	Brace Cabinet
H1	560000389	Screw MA 10-32 PAPH 64 STZI
H2	343417000	Screw TC 10-32 PAPH 12 STZI 23
H3	161168006	Screw TC 08-32 HX 12 SSBL
H4	70910	Screw MA 10-32 TRPH 40 SS FS
H10	07578	Screw TC 08-32 TRPH 12 STZC FS

# REFRIGERATION AND ICEMAKER ASSEMBLY MODEL WCC1401-R



**Figure 2**

Item No.	Part No.	Description
1A*	631500147	Kit Compressor
1	630900925	Comp 2 1/4 230/60 TCMSEH 404A UL/CSA
2	620070334	Receiver
3	620070338	Box electrical ASSY WCC
4	620070339	Cover E-Box WCC
5	638090350 see page 8	Water Level control ASY 3.5
6	620068258	Valve thermal expansion
7	630001272	Brkt MTG W/A 3.5" bison MTR
8	620069621	Dryer ASY
9	620070335	Fitg receiver inlet
10	620070336	Fitg receiver outlet
11	620069618	Tubg heat-exchanger
11A*	630000481	Switch High Pressure
12	620069619	Tubg discharge
13	620069620	Tubg cond return line
14	620069896	Tubg LP switch assembly
14A*	630900523	Switch Low Pressure
14B*	163404002	Gasket CU FLE 1/4"
15	620070344	Tubg - water inlet
16	630900963	Grommet mount comp
17	630900964	Sleeve grommet comp
18	630901666	Spacer 3.5" bison MTR
19	638007206 -04	Nut hex 1/2-20 jam
20	638008409	Fitg - bulkhd 7/16-20 MFL (2) BR

21	02543	Bolt MA 3/8-16 HX 48 STZI
22	168770002	Bolt MA 5/16-18 HX 48 STZI
23	325282000	Screw SD 08-18 HXWS 16 STZI
24	343417000	Screw TC 10-32 PAPH 12 STZI
25	620054736	Clamp harness adjustable 0.57-0.75" RICHCO

**NOTE:\*** = Not Shown

## REFRIGERANT AND ICEMAKER ASSEMBLY MODEL WCC1400-RACK

Item No.	Part No.	Description
1	620054231 see page 9	Water Level Control Assembly
2	620068259	Thermal Expansion Valve
2*	620065960	Valve Angled Txv 1/3 Ton R407A
3	638036218	Icemaker Mounting Bracket
4	638008409	Bulkhead Fitting
5	638007206-04	Jam Nut, 1/2-20
6	638090055	Dryer
7*	630201578	Panel Front
8*	630201579	Panel Side LH
9*	630201580	Panel Side RH
10*	620301581	Panel Top

NOTE: \* = Not Shown

NOTE: 2\* = Item is for R407A rack unit

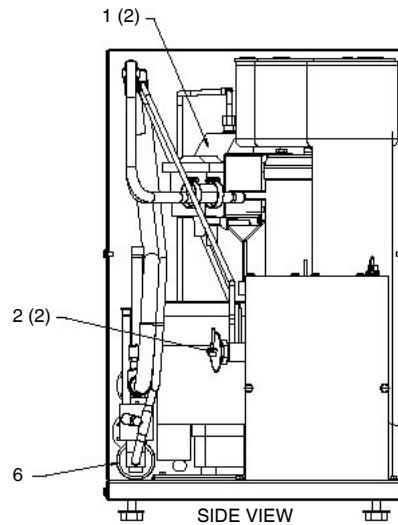
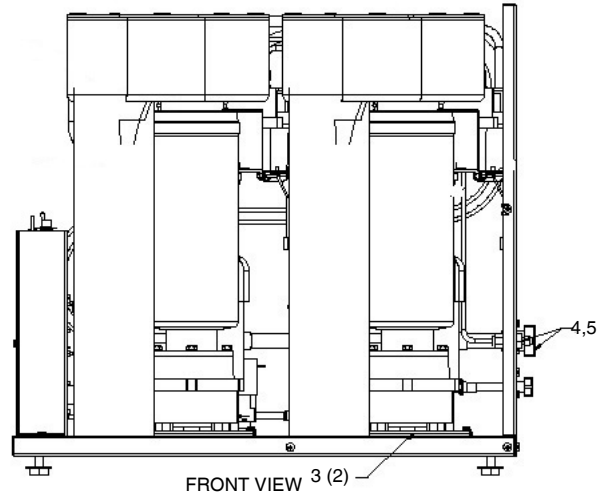


Figure 3

## FRONT END ASSEMBLY MODEL WCC1401-R SERIES

Item No.	Part No.	Name
1	638090000-001B	Gearmotor Less Cable, Seals, O-ring, Seal-mount 230V, 60Hz
	638090050-001	Gearmotor - 230V Service Kit
2	638090315	Shaft Seal Mount
3	638090051	Shaft Seal
4	638007301-030	Washer, Lower
5	638090053	E-Ring
6	638090316	Shaft Seal Seat
7	168833000	Washer Lock 1/4 Split
8	161179001	Screw, 1/4-20 x 3/4 Lg. HHMS
9	638090335	Evaporator Assembly
10	638090313	Auger
11	638090317	Extruding Head WCC
12	620068253	Expansion Valve
13	638090349	Bracket, Mounting
14	638090311	Auger Nut
15	638090319	Bearing Nylon
16	638090320	Bearing Delrin

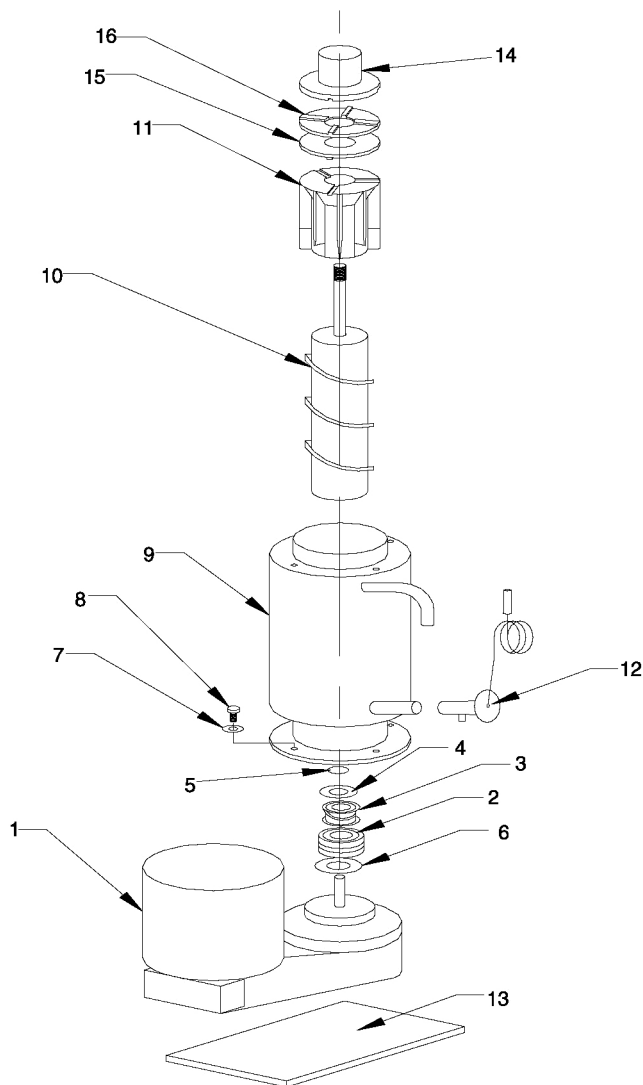


Figure 4



## FRONT END ASSEMBLY MODEL WCC 1400 RACK SERIES CHUNKLETS

Item No.	Part No.	Description
1	638090050	Gearmotor - 115V Service Kit
2	638090215	Shaft Seal Mount
3	638090051	Shaft Seal
4	638007301-030	Washer, Lower
5	638090053	E-Ring
6	638090216	Shaft Seal Seat
7	168833000	Washer, Lock 1/4 Split
8	161179001	Screw 1/4-20 x 3/4 Lg. HHMS
9	630000651	Evaporator Assembly
10	638090213	Auger
11	630900608	Extruding Head
12	620068259	Expansion Valve
13	638036218	Bracket, Mounting
14	638090211	Auger Nut
15	638090219	Bearing Nylon
16	638090220	Bearing Delrin

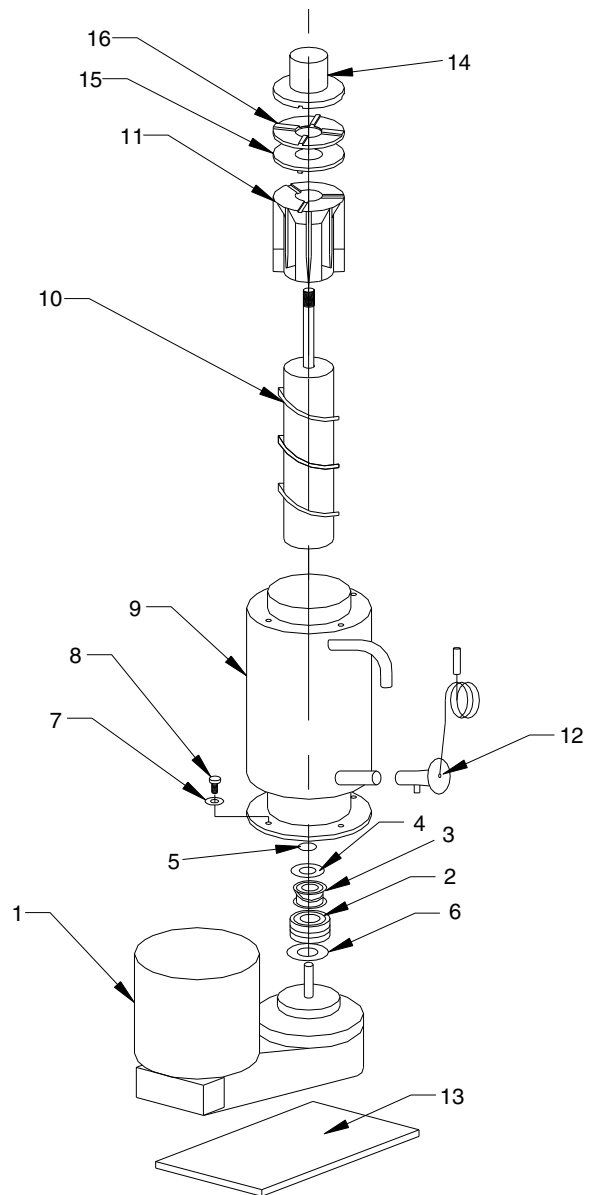


Figure 5

## DROP CHUTE ASSEMBLY WCC1401R

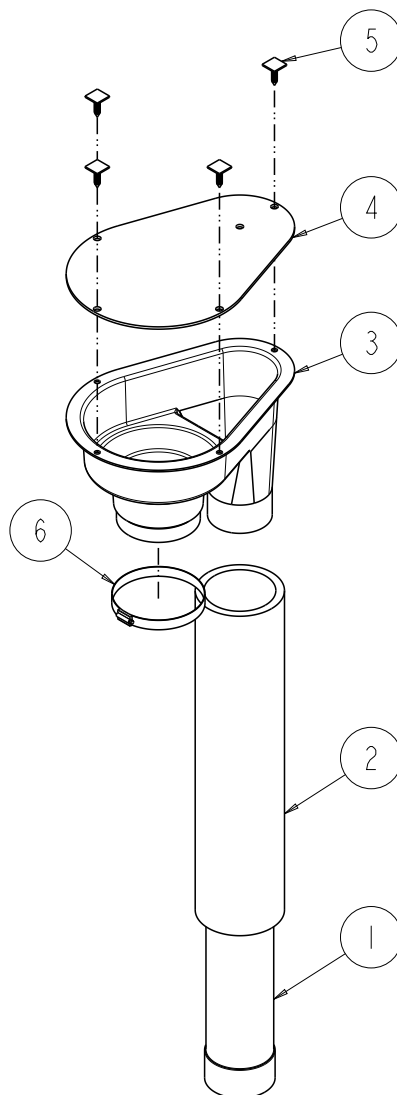


Figure 6

Item No.	Part No.	Description
1	638036020-001	Tube- Drop Emboss
2	638008193-12	Insulation 3-1/8 ID X 3/8 WA
3	638036086	Disp Tray
4	630900948	Cover Dispense Tray 3.5 Well
5	638036867-001	Clip Christmas Tress
6	638036087	Clamp Disp Tray FLAKR /CHU
7 *	630900954	Thermostat Well 3.5

NOTE: \* = Not Shown

## DROP CHUTE ASSEMBLY WCC1400-RACK

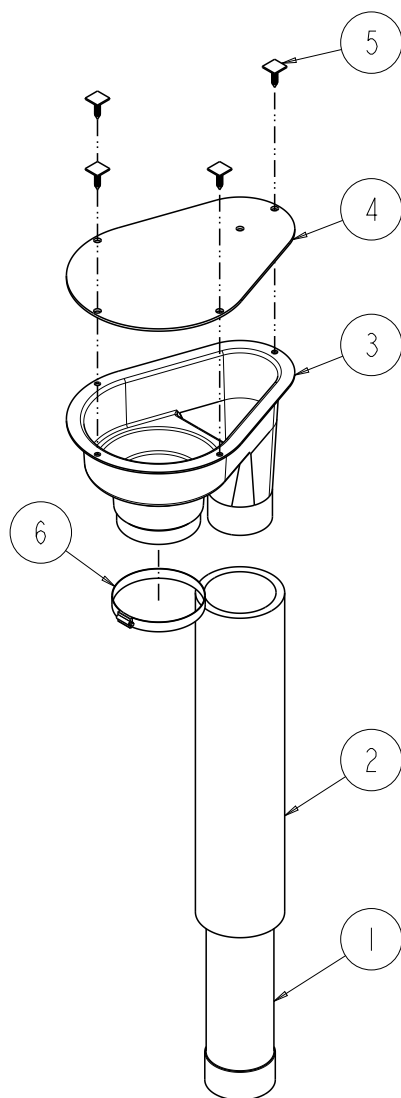


Figure 7

1	638036213	Tube- Drop Emboss
2	638008193-12	Insulation 3-1/8 ID X 3/8 WA
3	630001255	Disp Tray
4	630900942	Cover Dispense Tray 2, 2.5 Well
5	638036867-001	Clip Christmas Tress
6	638036087	Clamp Disp Tray FLAKR /CHU
7 *	630900953	Thermostat Well 2, 2.5

NOTE: \* = Not Shown

## WATER CONTROL ASSEMBLY WCC1401R

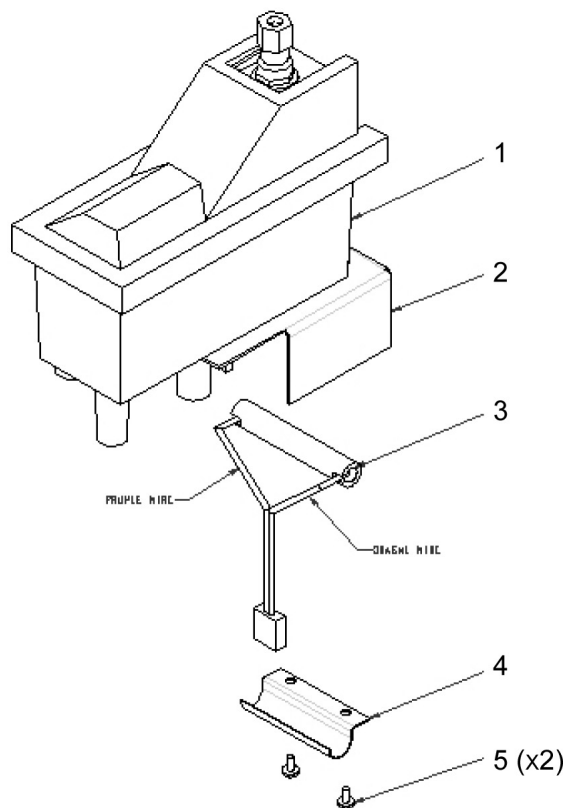


Figure 8

Item No.	Part No.	Name
1	638090350	Water Level Control Assy.
2	638092529	Brkt - Water Level
3	638092531	Reed Switch Assy.
4	638008097	Clamp - Reed Switch
5	161168017	Screw - 6-32

## WATER CONTROL ASSEMBLY WCC1400-RACK 620054231

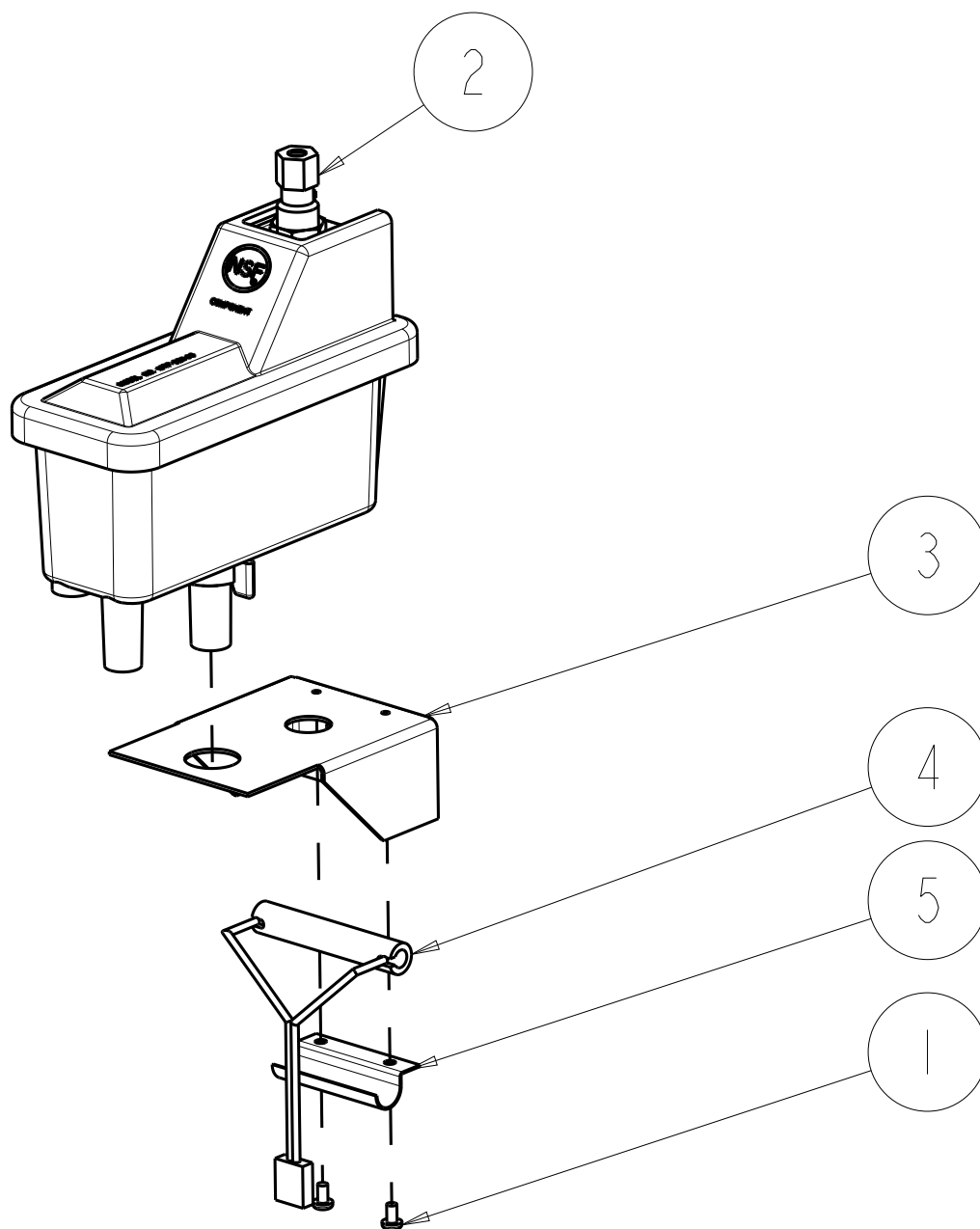


Figure 9

Item No.	Part No.	Name
1	161168017	Screw #6-32
2	630900547	Water Level Control Assembly
3	638004717	Brkt Water Level
4	638008483	Reed Switch Assembly
5	638008097	Clamp - Reed Switch

# ELECTRICAL BOX ASSEMBLY MODEL WCC1401R 620070338

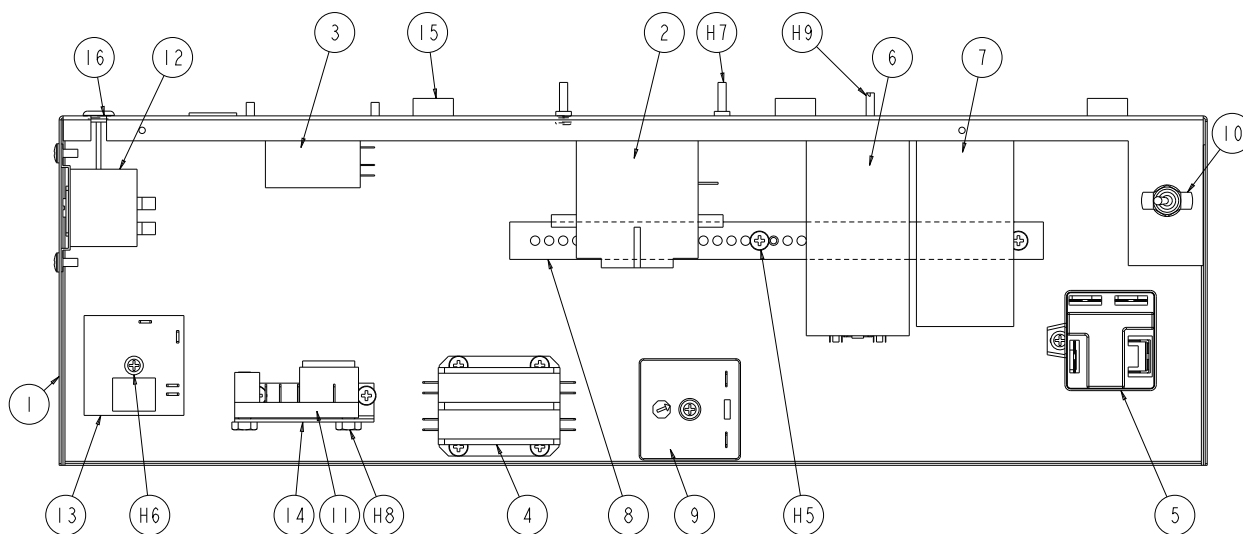


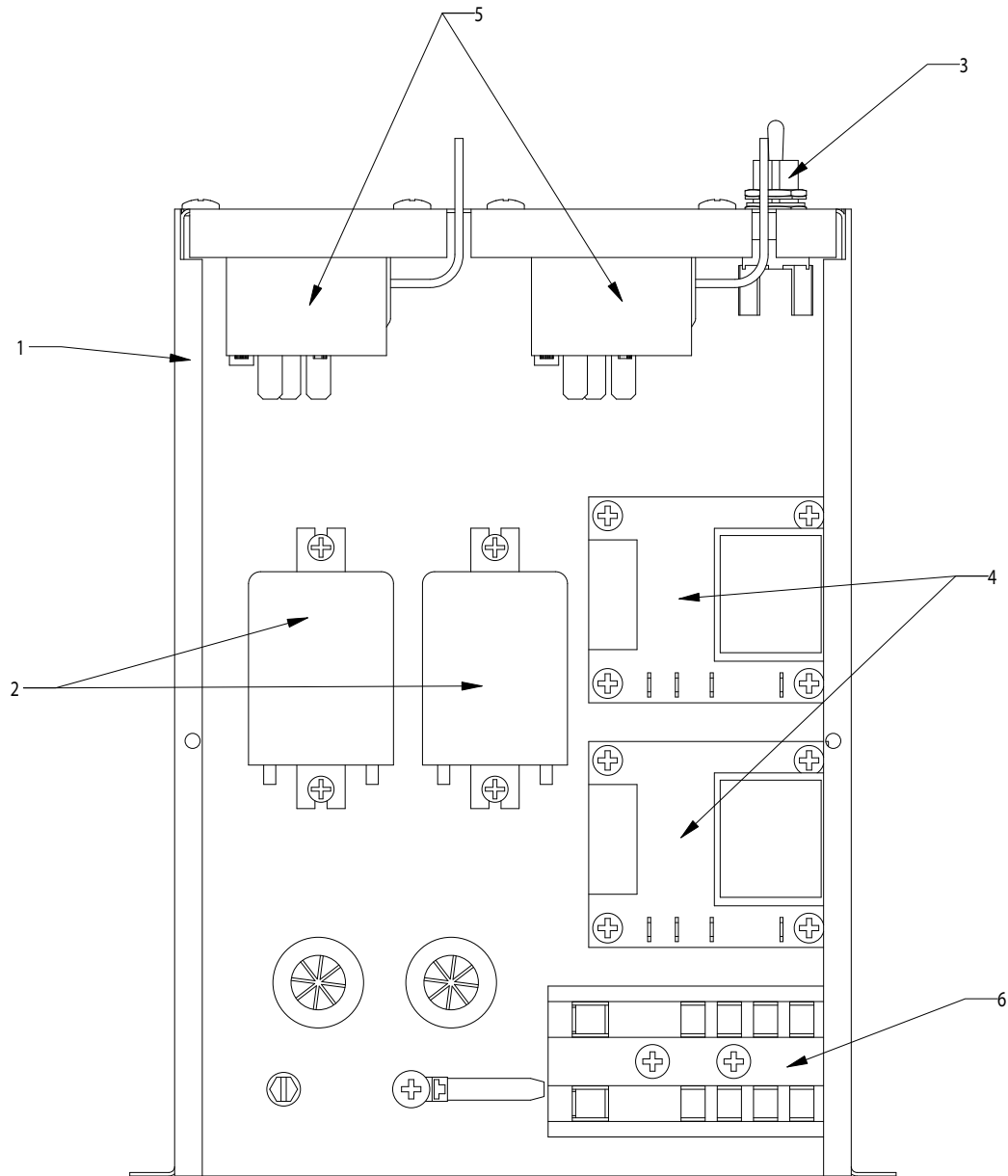
Figure 10

Item No.	Part No.	Description
1	620070337	Base E-Box
2	638090054	Relay, Main Contactor 208V
3	638010002	Relay, Anti Freeze 220V
4	40713	Relay, Post Run Contactoer 208/240V 50/60HZ 25A
5	620067542	Comp Delay Timer
6	630901026	CAPAC STR 176-216 330V
7	630900967	CAPAC Run 45 MFD 370V
8	630200166	Cap Strap Universal
9	630901670	Timer Delay
10	638004791	SWT Toggle
11	630900947	SWT-Assy Bin Control ELREHA 230V
12	638036067	SWT-Assy Bin Control
13	620070340	Timer Auger Delay 180SEC 230/60
14	630201133	Brkt Bin Control ELREHA
15	03611	Bushing Snap H 812ID X 950D
16	638036063	Grommet .18ID RBR
17 *	33066	Lead Wire 04" RD 16G2 250R
18 *	34342	Lead Wire 07" OR 14G2 250F

19 *	630300038	Lead Wire 11" RD 12G2 250F
20 *	630300047	Lead Wire 06" RD 12G2 250 F&R
21 *	620070341	Harn E-Box
H5	07578	Screw TC 08-32 TRPH 12 STZC FS
H6	07515	Screw SM 10 TB PAPH 32 STZI
H7	638007026-09	Screw 8-32 BHMS
H8	165294000	Bolt MA 1/4-20 HX 32 STZI
H9	161168005	Screw TC 08-32 HX 16 STZI

NOTE: \* = Not Shown

## ELECTRICAL BOX ASSEMBLY MODEL WCC1400-RACK



**Figure 11**

Item No.	Part No.	Name
1	630201597	Electrical box
2	638003898	Relay, Anti freeze
3	638004791	Switch-Toggle
4	630900946	Bin Control
5	638009388-01	Auger Delay
6	161838002	Terminal Block

## CR1101 REMOTE CONDENSER

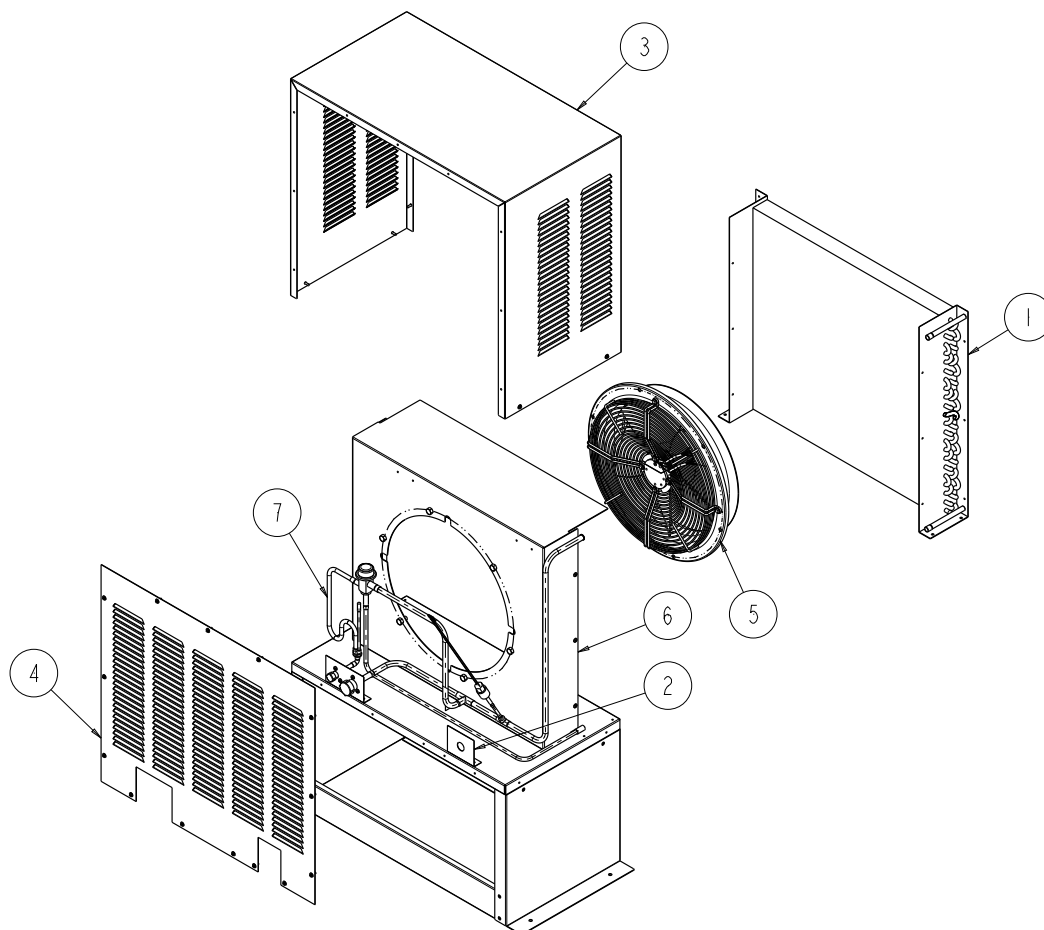


Figure 12

Item No.	Part No.	Name
1	161870007	Cond-coil Air 23.5 X 28.0 CR120X
2	161887003	Brkt Ele Svc Ent Rmt Cdr
3	164517002	Wrap RMT Cond
4	164517003	Panel RMT CDR
5	620067891	Fan Motor Assembly EBM 350MM
6	620068025	Shroud Cond RMT
7	620068026	Line ASY
8*	620070345	Harness
9*	161004000	Strain relief BLK Nylon
10*	164546001	Base W/A Chassis
11*	164921008	Brace Leg RMT COND
12*	166209001	Leg RMT COND

NOTE: \* Not Shown





LINE ASSY CR1101

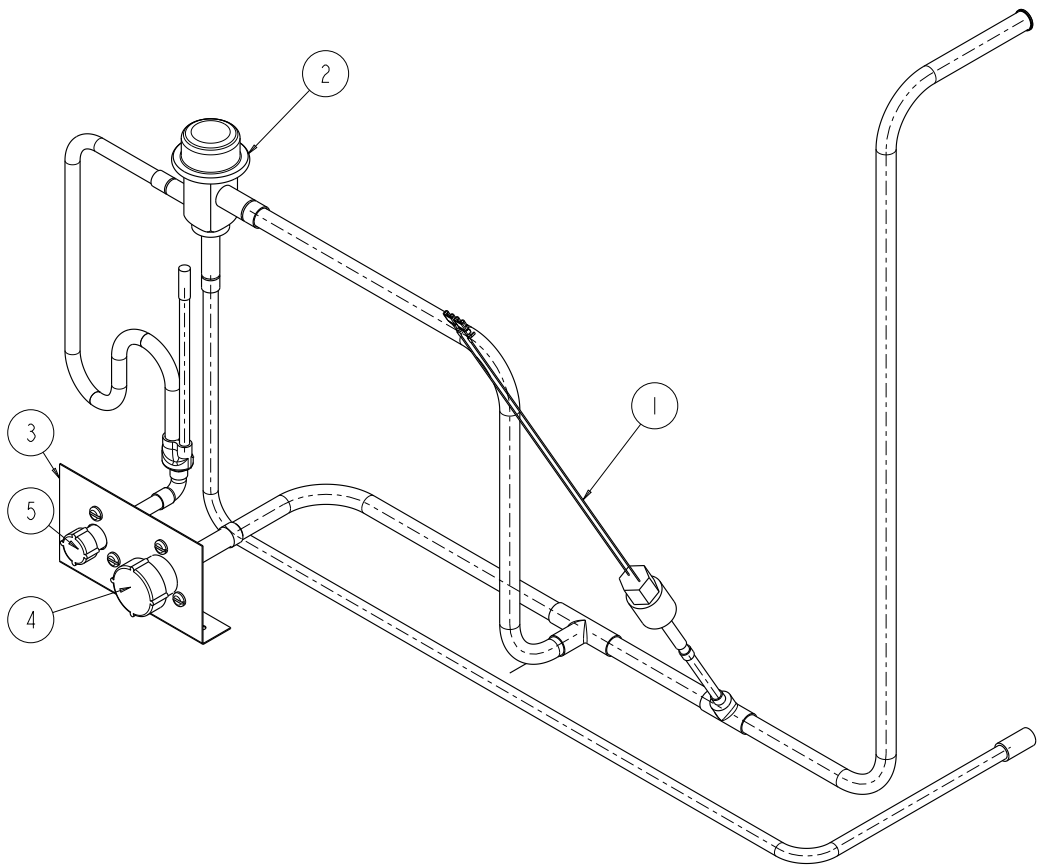


Figure 13

Item No.	Part No.	Name
1	161773006	Switch Pressure
2	166226000	Valve Head Press Oroa "I" Rmt
3	630000050	Brkt & Cnn Asy Cr
4	630900082	Valve Aeroquip 1/2
5	166229000	Valve Aeroquip 3/8





**Cornelius Inc.**  
**[www.cornelius.com](http://www.cornelius.com)**