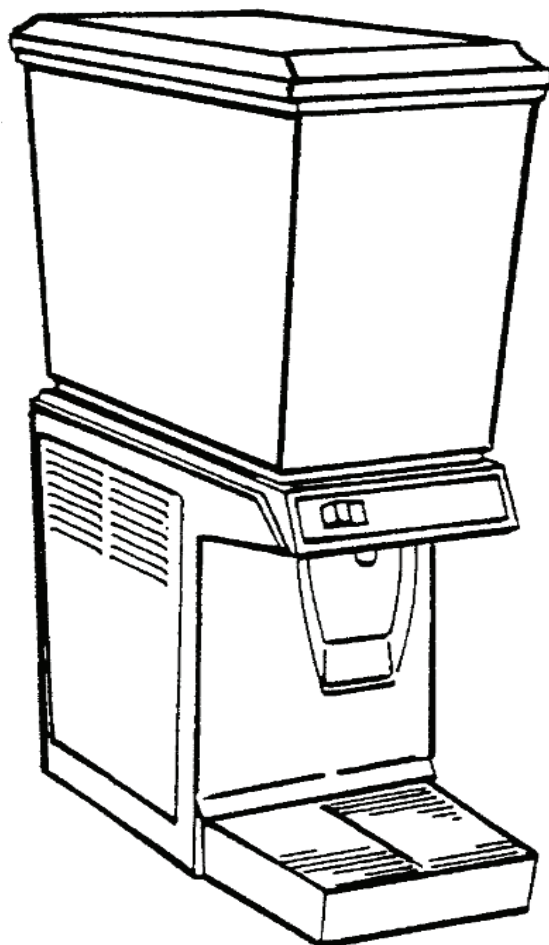




JS7 COLD BEVERAGE DISPENSER

Illustrated Parts List



Model Numbers:

621058496

621058771

JS7

Release Date: June 06, 2001

Publication Number: 18486

Revision Date: August 30, 2019

Revision: M

Visit the Cornelius web site at www.cornelius.com for all your Literature needs.

The products, technical information, and instructions contained in this manual are subject to change without notice.

These instructions are not intended to cover all details or variations of the equipment, nor to provide for every possible contingency in the installation, operation or maintenance of this equipment. This manual assumes that the person(s) working on the equipment have been trained and are skilled in working with electrical, plumbing, pneumatic, and mechanical equipment. It is assumed that appropriate safety precautions are taken and that all local safety and construction requirements are being met, in addition to the information contained in this manual.

This Product is warranted only as provided in Cornelius' Commercial Warrant applicable to this Product and is subject to all of the restrictions and limitations contained in the Commercial Warranty.

Cornelius will not be responsible for any repair, replacement or other service required by or loss or damage resulting from any of the following occurrences, including but not limited to, (1) other than normal and proper use and normal service conditions with respect to the Product, (2) improper voltage, (3) inadequate wiring, (4) abuse, (5) accident, (6) alteration, (7) misuse, (8) neglect, (9) unauthorized repair or the failure to utilize suitably qualified and trained persons to perform service and/or repair of the Product, (10) improper cleaning, (11) failure to follow installation, operating, cleaning or maintenance instructions, (12) use of "non-authorized" parts (i.e., parts that are not 100% compatible with the Product) which use voids the entire warranty, (13) Product parts in contact with water or the product dispensed which are adversely impacted by changes in liquid scale or chemical composition.

Contact Information:

To inquire about current revisions of this and other documentation or for assistance with any Cornelius product contact:

www.cornelius-usa.com

800-238-3600

Trademarks and Copyrights:

This document contains proprietary information and it may not be reproduced in any way without permission from Cornelius.

This document contains the original instructions for the unit described.

CORNELIUS INC
101 Regency Drive
Glendale Heights, IL
Tel: + 1 800-238-3600

Printed in U.S.A.

JS7 COLD BEVERAGE DISPENSER

JS7 & PN-621058496 GENERAL ASSEMBLY

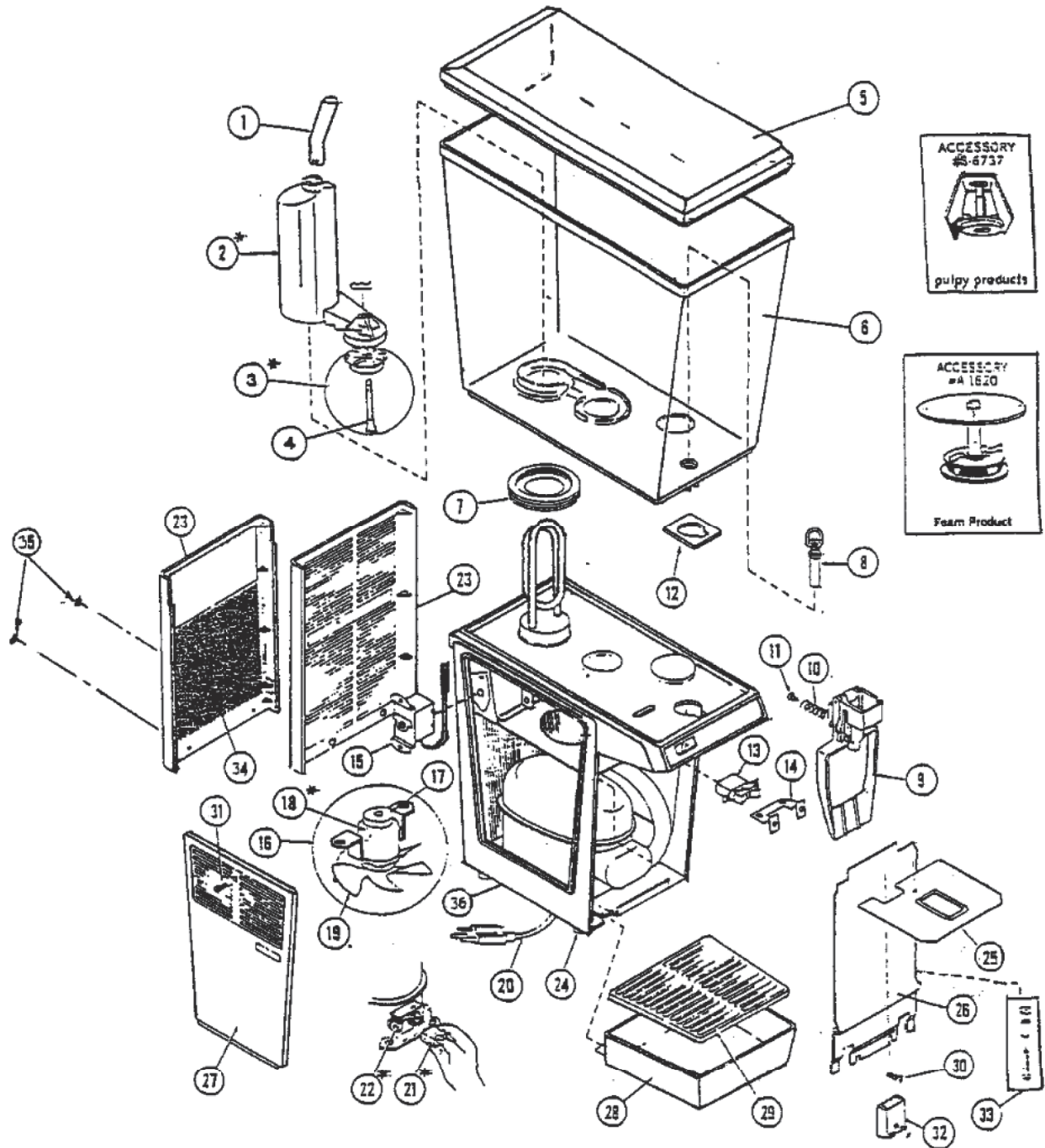


Figure 1.



Table 1.JS7 Cold Beverage Dispenser Components

Item No.	Part No.	Description
1	S6670	SPRAY TUBE
	A1620	IMPELLER CIRC ASSY. FIN FLAT TOP (SEE SMALL BOX ON DRAWING)
	S6737	HOUSING FOAMED
1	S6677	HOUSING PUMP ASSY. 120V 60HZ
	S7046	PUMP ASSY. 230V 50HZ
2	A3058	IMPELLER AND SUPPORT PIN 120V 60HZ
	A3192	IMPELLER W/SUPPORT PIN 230V 50HZ
3	A2549	PIN SUPPORT IMPELLER
4	620069903	COVER BOWL
5	S6562	BOWL
6	S6600	GASKET BOWL
7	S4206	TUBE PINCH
8	S4381	HANDLE PUSH ASSY.
	720721601	LABEL PUSH HANDLE
9	S4363	TUBE PINCH SPRING
10	S4576	REVIT SPR RET (PACK OF 6)
11	S6901	GASKET BOWL SPOUT
12	18334	SWITCH ON-OFF
13	S8053	BRKT MTG SWITCH
14	S6657	THERMOSTAT
15	S6641	SPRAY DR ASSY.
16	S6750	MAGNET ASSY.
17	S6642	SPRAY DR AND FAN MTR 120V 60HZ
	S6867	SPRAY DR AND FAN MTR 230V 50HZ
18	18778	BLADE FAN
19	S1249	CORD SERV 120V 60HZ
20	A8354	KIT COMP 1/6HP 120V 60HZ(NO LONGER AVAILABLE)
	A8355	KIT COMP 230V 50HZ
	A8356	KIT COMP 208V 60HZ (NO LONGER AVAILABLE)
	S2220	RELAY 230V 50HZ
	18388	RELAY
	18567	RELAY
	629097423	KIT COMP 115V 60HZ
	620062790	RELAY (USED ON SERIAL NO. 62A1514JC025 AND ABOVE)

Table 1.JS7 Cold Beverage Dispenser Components

Item No.	Part No.	Description
21	S3067	OVERLD 120V 60HZ
	18390	OVERLD 230V 50HZ
	S4156	OVERLD 220V 60HZ (NO LONGER AVAILABLE)
	620062781	OVERLD (USED ON SERIAL NO. 62A1514JC025 AND ABOVE)
22	A7315	PANEL BACK
	620049598	PANEL BACK BLACK TOP BLOCKED
23	S3159	LEG SET
24	S7683	SWITCH AND COVER PLATE
25	S7680	PANEL FRONT (USE BELOW SERIAL NO. 315270)
	18710	PANEL, FRONT (USED ON SERIAL NO. 315270 AND ABOVE)
26	S6793	PANEL SIDE ASSY.
	620050086	FRAME SIDE BLACK
27	A7296	DRIP TRAY (USED BELOW SERIAL NO. 315270)
	18818	DRIP TRAY (USED ON SERIAL NO. 315270 AND ABOVE)
	620053700	DRIP-TRAY JT/JS/JW BLACK
28	A7292	GRILLE DRIP TRAY (USED ON SERIAL NO. 315270 AND ABOVE)
	A7310	DRIP TRAY ASSY. (USED BELOW SERIAL NO. 315270)
	18747	DRIP TRAY ASSY. (USED ON SERIAL NO. 315270 AND ABOVE)
	620708554	CUP-REST JT20 STND 07 .0X5.0 P
29	S4554	SCREW 1/4 (PACK OF 6)
30	A3060	SCREW SIDE CLIP
31	S7289	DRAIN ASSY. CONDENSATE
32	A2081	SPACER COVER MTG
33	A4188	FILTER BACK PANEL
34	A8793	SCREW NO. 10 X 3/8 (PACK OF 6)
35	A7035	FRAME, SIDE

JS7D COLD BEVERAGE DISPENSER

(PN-621058771) GENERAL ASSEMBLY

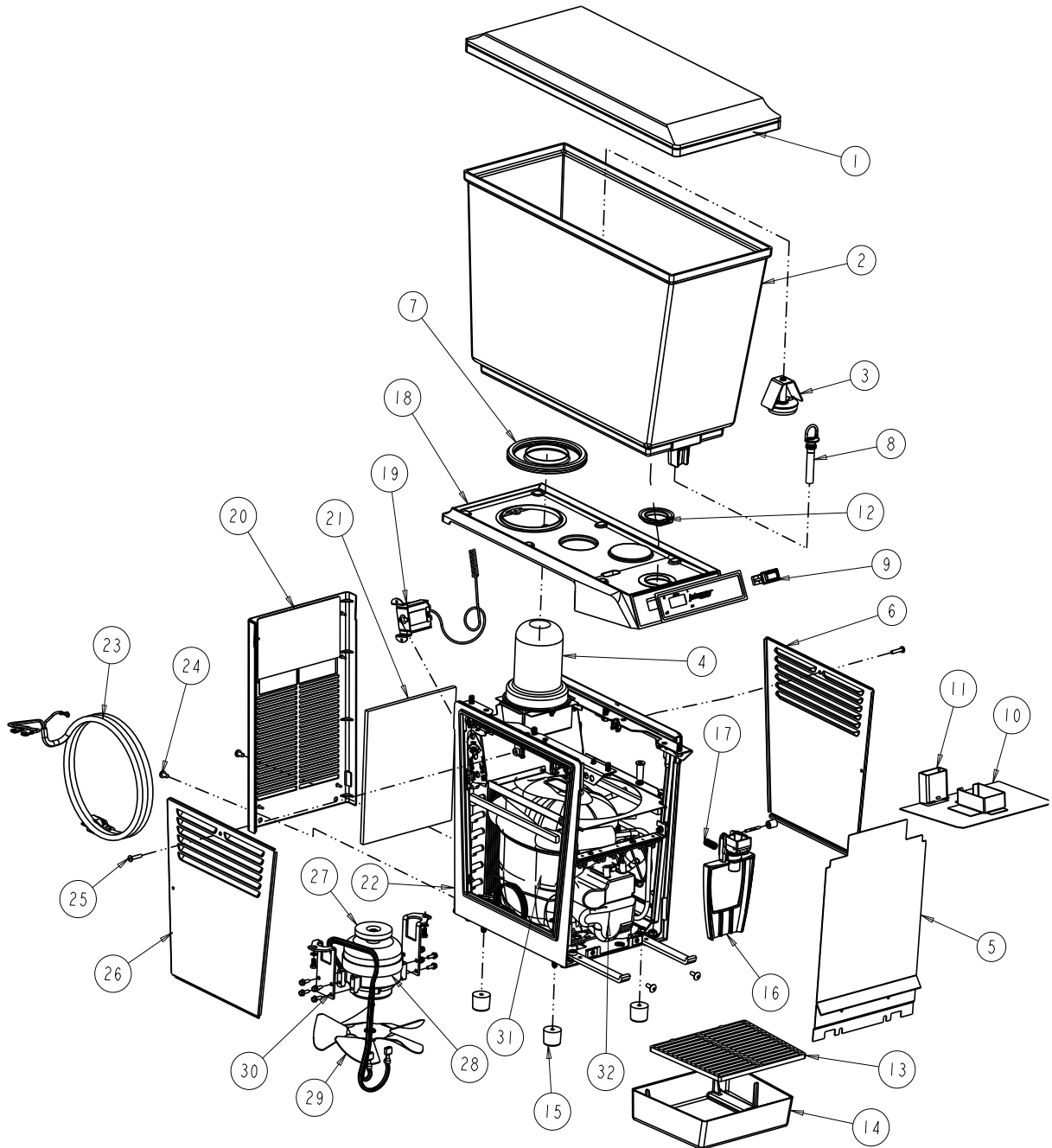


Figure 2



Table 2.JS7D Cold Beverage Dispenser Components

Item No.	Part No.	Description
1	620069903	COVER BOWL
2	S6562	BOWL
3	S6737	IMPELLER CIRC ASY PULPY 02
	A1620	IMPELLER CIRC ASY FOAMY 02 (OPTION)
4	620607610	DOME EVAP ASSY
5	S7680	PANEL FRONT (USE BELOW SERIAL NO. 315270)
	18710	PANEL, FRONT (USED ON SERIAL NO. 315270 AND ABOVE)
6	7215116	PANEL SIDE JS7
7	S6600	GASKET BOWL
8	S4206	TUBE PINCH
9	18334	SWITCH ON-OFF
10	S7683	SWITCH AND COVER PLATE
11	S7289	DRAIN ASSY. CONDENSATE
12	S6901	GASKET BOWL SPOUT
13	A7296	DRIP TRAY (USED BELOW SERIAL NO. 315270)
	18818	DRIP TRAY (USED ON SERIAL NO. 315270 AND ABOVE)
	620053700	DRIP-TRAY JT/JS/JW BLACK
14	A7292	GRILLE DRIP TRAY (USED ON SERIAL NO. 315270 AND ABOVE)
	A7310	DRIP TRAY ASSY. (USED BELOW SERIAL NO. 315270)
	18747	DRIP TRAY ASSY. (USED ON SERIAL NO. 315270 AND ABOVE)
	620708554	CUP-REST JT20 STND 07 .0X5.0 P
15	S3159	LEG SET
16	S4381	HANDLE PUSH ASSY.
	720721601	LABEL PUSH HANDLE
17	S4363	TUBE PINCH SPRING
18	620048437	TRAY CONDENSATE STD, BLACK
19	S6657	THERMOSTAT
20	A7315	PANEL BACK
	620049598	PANEL BACK BLACK TOP BLOCKED
21	A4188	FILTER BACK PANEL

Table 2.JS7D Cold Beverage Dispenser Components

Item No.	Part No.	Description
22	A7035	FRAME, SIDE
23	S1249	CORD SERV 120V 60HZ
24	A8793	SCREW NO. 10 X 3/8 (PACK OF 6)
25	A3060	SCREW SIDE CLIP
26	S6793	PANEL SIDE ASSY.
	620050086	FRAME SIDE BLACK
27	6750	MAGNET JETSPRAY
28	S6642	SPRAY DR AND FAN MTR 120V 60HZ
	S6867	SPRAY DR AND FAN MTR 230V 50HZ
29	18778	BLADE FAN
30	6644	BRKT MTR JS7)
31	A8354	KIT COMP 1/6HP 120V 60HZ(NO LONGER AVAILABLE)
	A8355	KIT COMP 230V 50HZ
	A8356	KIT COMP 208V 60HZ (NO LONGER AVAILABLE)
	S2220	RELAY 230V 50HZ
	18388	RELAY
	18567	RELAY
	629097423	KIT COMP 115V 60HZ
32	620062790	RELAY (USED ON SERIAL NO. 62A1514JC025 AND ABOVE)
	S3067	OVERLD 120V 60HZ
	18390	OVERLD 230V 50HZ
	S4156	OVERLD 220V 60HZ (NO LONGER AVAILABLE)
	620062781	OVERLD (USED ON SERIAL NO. 62A1514JC025 AND ABOVE)

Cornelius Inc.
www.cornelius.com