

CONTINUOUS FLOW ICEMAKER

2000 - Series Illustrated Parts List

Release Date: 07 February, 2018

Publication Number: 548000026

Revision: A

Notice

The products, technical information, and instructions contained in this manual are subject to change without notice. These instructions are not intended to cover all details or variations of the equipment, nor to provide for every possible contingency in the installation, operation or maintenance of this equipment. This manual assumes that the person(s) working on the equipment have been trained and are skilled in working with electrical, plumbing, pneumatic, and mechanical equipment. It is assumed that appropriate safety precautions are taken and that all local safety and construction requirements are being met, in addition to the information contained in this manual.

This Product is warranted only as provided in Cornelius' Commercial Warranty applicable to this Product and is subject to all of the restrictions and limitations contained in the Commercial Warranty.

Cornelius will not be responsible for any repair, replacement or other service required by or loss or damage resulting from any of the following occurrences, including but not limited to, (1) other than normal and proper use and normal service conditions with respect to the Product, (2) improper voltage, (3) inadequate wiring, (4) abuse, (5) accident, (6) alteration, (7) misuse, (8) neglect, (9) unauthorized repair or the failure to utilize suitably qualified and trained persons to perform service and/or repair of the Product, (10) improper cleaning, (11) failure to follow installation, operating, cleaning or maintenance instructions, (12) use of "non-authorized" parts (i.e., parts that are not 100% compatible with the Product) which use voids the entire warranty, (13) Product parts in contact with water or the product dispensed which are adversely impacted by changes in liquid scale or chemical composition.

Correct Disposal of this Product



RECYCLE

This marking indicates that this product should not be disposed with other household wastes throughout the EU. To prevent possible harm to the environment or human health from uncontrolled waste disposal, recycle it responsibly to promote the sustainable reuse of material resources. To return your used device, please use the return and collection systems or contact the retailer where the product was purchased. They can take this product for environmental safe recycling.

Trademarks and Copyrights

This document contains proprietary information and it may not be reproduced in any way without permission from Cornelius. This document contains the original instructions for the unit described.

CORNELIUS INC
101 Regency Drive
Glendale Heights, IL
Tel: + 1 800-238-3600

Printed in U.S.

Contact Information

To inquire about current revisions of any documentation or assistance with any Cornelius product, contact:

www.cornelius.com
800-238-3600

Item No	Part No.	Name
1	162964027	Compressor (WCC2001 & WCF2201)
	162964046	Compressor (WCC2002 & WCF2202)
2	638036849	Condenser (WCC & WCF Air)
	27177	Condenser (WCC & WCF Water)
	161870007	Condenser (WCC & WCF Remote)
3	638090344001	Fan Motor (WCC & WCF Air 50 & 60 HZ)
	620067891	Motor EBM 350mm Fan (Remote 50 & 60 HZ)
4	63809034401	Fan Blade (Air)
	630900246	Fan Blade (WCC & WCF Remote)
5	638004391	Bracket Fan Motor
6	638036087	Clamp, Dispense Tray
7	638036872001	Dispense Tray Assembly
8	630900948	Cover Dispense Tray
9	630900954	Thermostat Well
10	638036867001	Clip Cove

Item No	Part No.	Name
11	638036020001	Drop Tube Assembly
12	638092537	Cover, Electrical Box
13*	164980002	Water Regulator Valve (Water)
14*	638009755	High Pressure Switch (Water)
15*	161773003	Pressure Switch (WCC & WCF Remote)
16*	166226000	Valve Head Pressure (WCC & WCF Remote)
17*	166225000	Receiver (WCC & WCF Remote)
18*	638092521	Panel Frnt WCF2200
19*	638036005-01	Panel Side LH SS
20*	638036006-01	Panel Side RH SS
21*	638092522	Panel Upper WCF2200
22	638036867-001	Clip Christmas Trees
23	620068258	Valve Thermal Expansion R404a WCC/WCF2000

© 2018, Cornelius Inc.

FRONT END ASSEMBLY MODEL 2000 SERIES

Item No.	Part No.	Name
1	638090000-001B	Gearmotor Less Cable, Seals, O-ring, Seal-mount 230V, 60Hz
	638090000-001B	Gearmotor Less Cable, Seals, O-ring, Seal-mount 220V, 50Hz
	638090050-001	Gearmotor - 230V Service Kit
	638090050-001	Gearmotor - 220V Service Kit
2	638090315	Shaft Seal Mount
3	638090051	Shaft Seal
4	638007301-030	Washer, Lower
5	638090053	E-Ring
6	638090316	Shaft Seal Seat
7	168833000	Washer Lock 1/4 Split
8	161179001	Screw, 1/4-20 x 3/4 Lg. HHMS
9	638090335	Evaporator Assembly
10	638090313	Auger
11	638090317	Extruding Head WCC
	638090318	Extruding Head WCF
12	620068253	Expansion Valve
13	638090349	Bracket, Mounting
14	638090311	Auger Nut
15	638090319	Bearing Nylon
16	638090320	Bearing Delrin

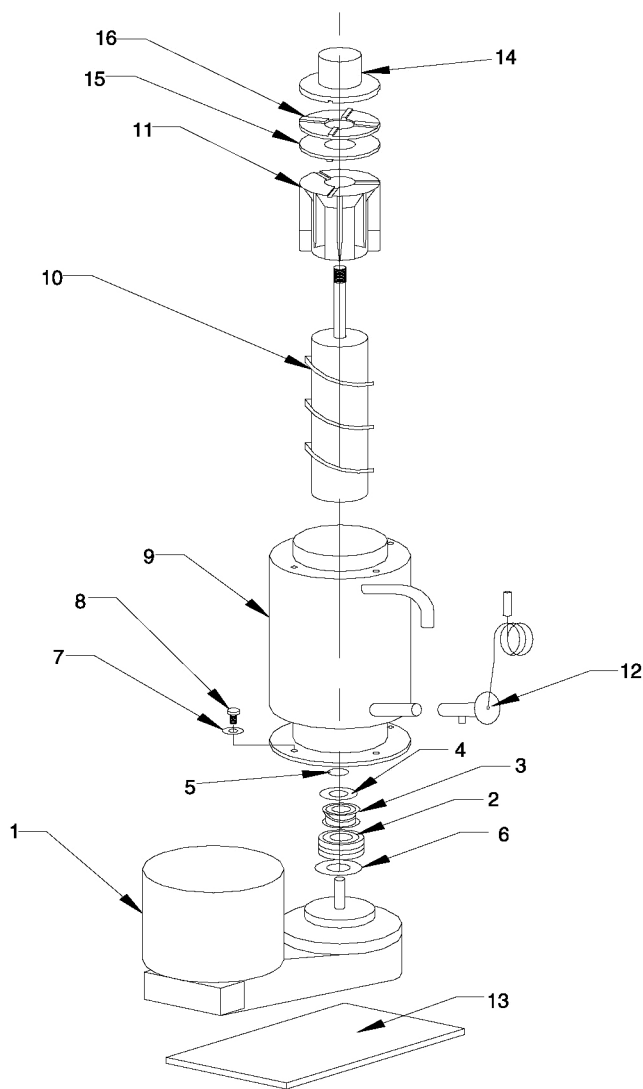


Figure 2

ELECTRICAL ASSEMBLY MODEL 2000 SERIES

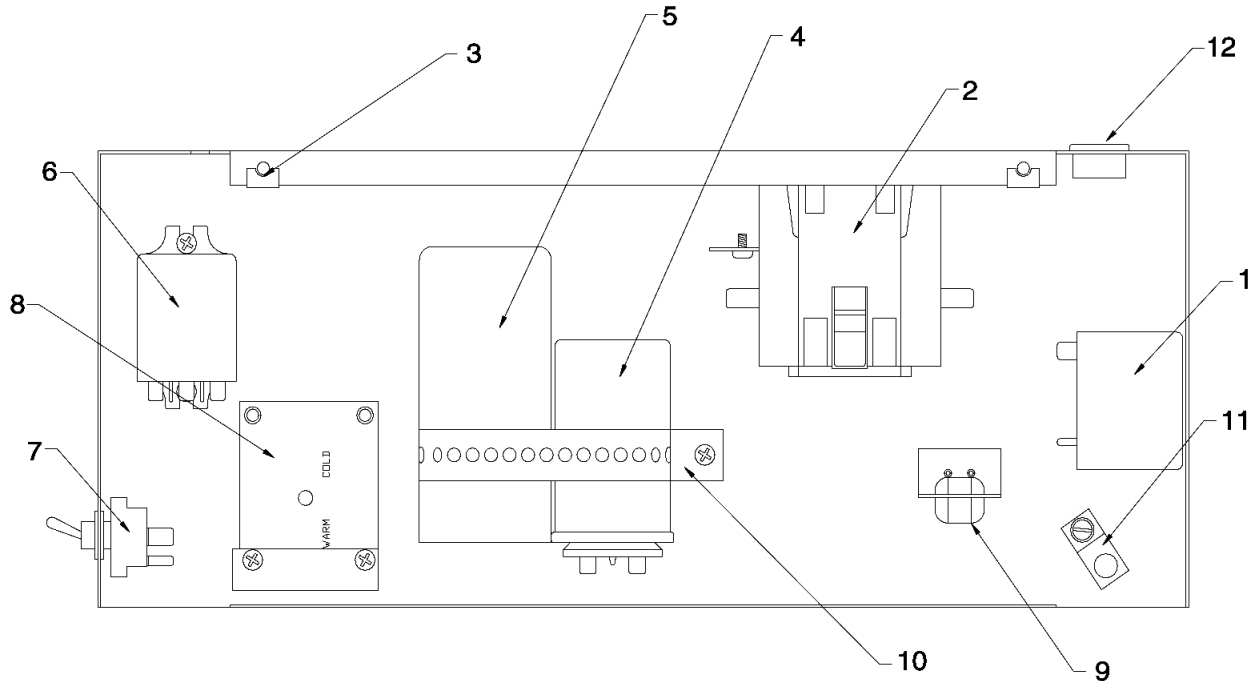


Figure 3

Item No	Part No	Name
1	620056394	Potential Relay, 208/230V 60 Hz WCC1001A & WCF1101A
	638090242	Start Relay, 240V 50 Hz WCC1002 & WCF1102
		Start Relay, 240V 50 Hz WCC2002 & WCF2202
	40285	Start Relay, 208/230 60 Hz WCC2001 & WCF2201
2	638090054	Relay, 208/230V 50/60 Hz
3	638007262-01	Nut, Tinnerman
4	620056592	Capacitor Run, 208/230 V 60 Hz WCC1001A & WCF1101A
	638090282	Capacitor Run, 240 V 50 Hz WCC1002 & WCF1102
	161192005	Capacitor Run, 208/230 V 60 Hz WCC2001 & WCF2201
		Capacitor Run, 240 V 50 Hz WCC2002 & WCF2202

Item No	Part No	Name
5	620056395	Capacitor Start, 208/230 V 60 Hz WCC1001A & WCF1101A
	25335	Capacitor Start, 240V 50 Hz WCC1002 & WCF1102
	41044	Capacitor Start, 208/230 V 60 Hz WCC2001 & WCF2201
	161165013	Capacitor Start, 240 V 50 Hz WCC2002 & WCF2202
6	638010002	Relay220V
7	638004791	Switch Toggle
8	630900947	Switch Bin Control
9	63800734103	Strain Relief
10	630200166	Capacitor Mounting Strap
11	638007921	Ground Connector
12	163529000	Bushing

CR1200 REMOTE CONDENSER

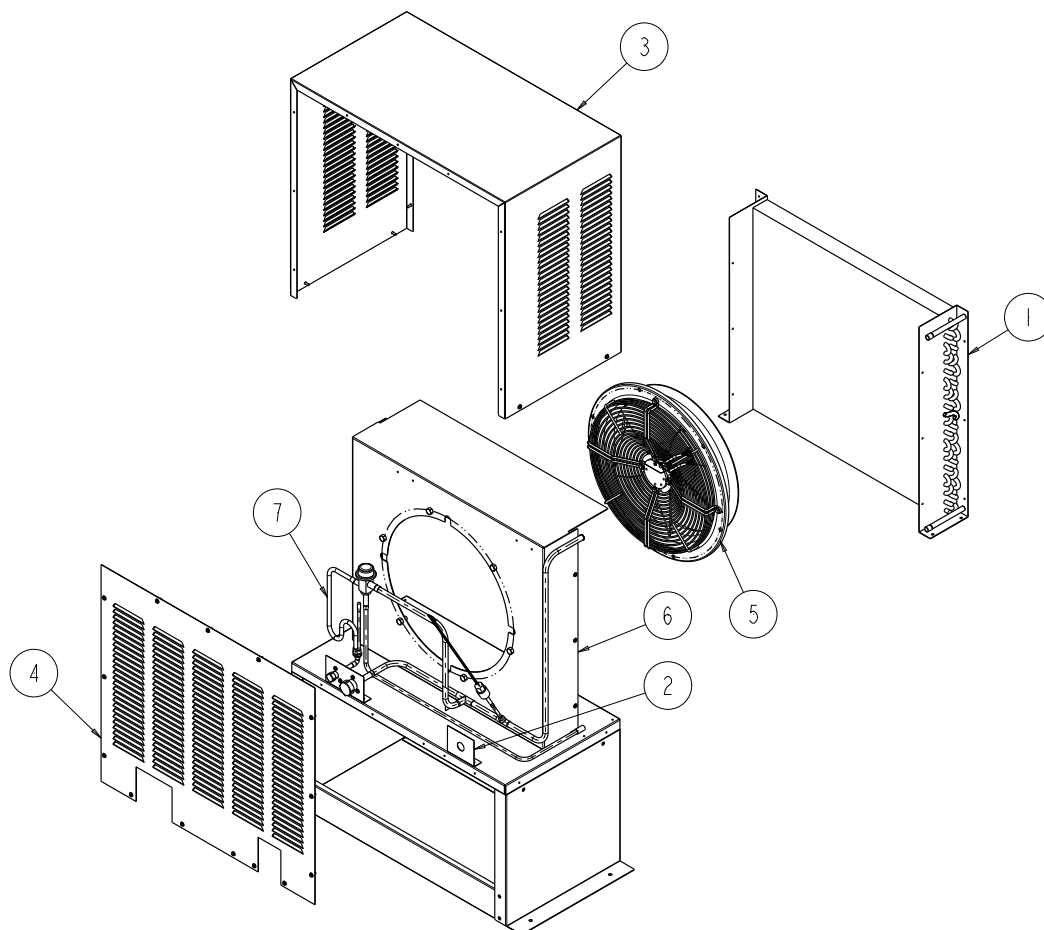


Figure 4

Item No.	Part No.	Name
1	161870007	Cond-coil Air 23.5 X 28.0 CR120X
2	161887003	Brkt Ele Svc Ent Rmt Cdr
3	164517002	Wrap RMT Cond
4	164517003	Panel RMT CDR
5	630900246	Fan 18"D 3bld Cw .50id Hub
	27185	Motor Fan 230/5/6
	620067891	Fan Motor Assembly EBM 350MM (For serial number starting from 62E)
6	620068025	Shroud Cond RMT WCC 2000R
7	620068026	Line ASY CR1200



LINE ASSY CR1200

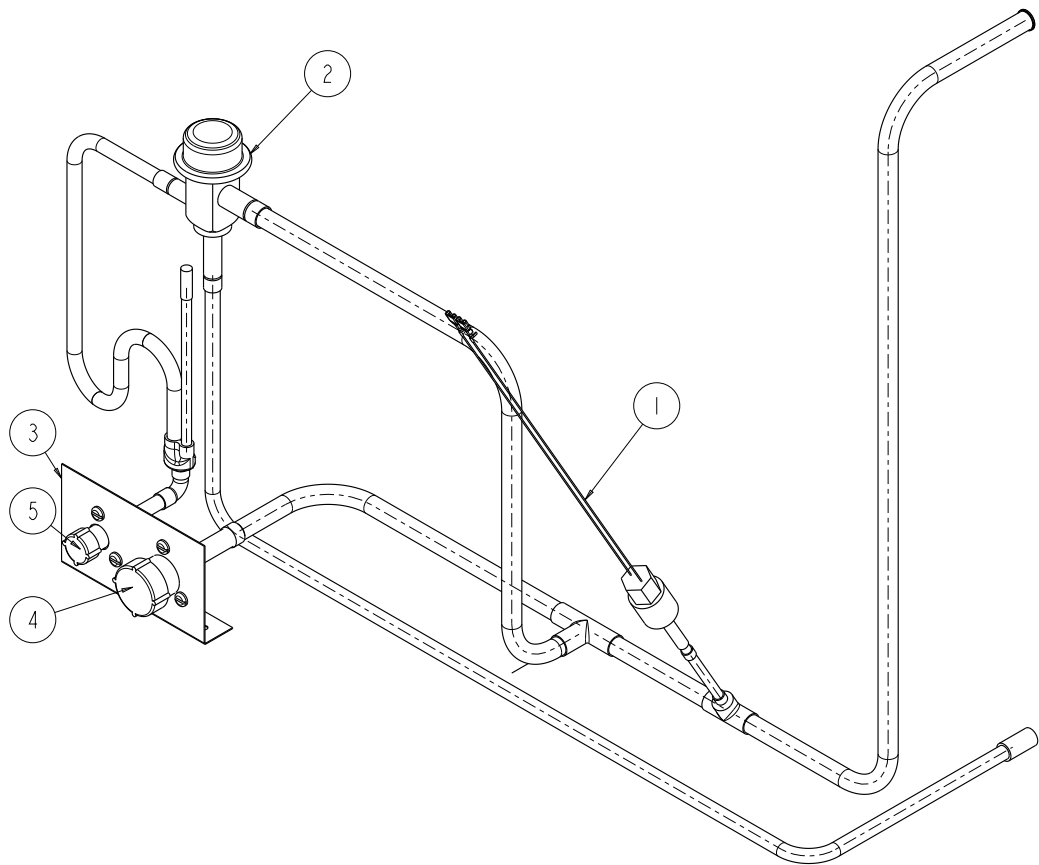


Figure 5

Item No.	Part No.	Name
1	161773006	Switch Pressure
2	166226000	Valve Head Press Oroa "I" Rmt
3	630000050	Brkt & Cnn Asy Cr
4	630900082	Valve Aeroquip 1/2
5	166229000	Valve Aeroquip 3/8



Cornelius Inc.
www.cornelius.com