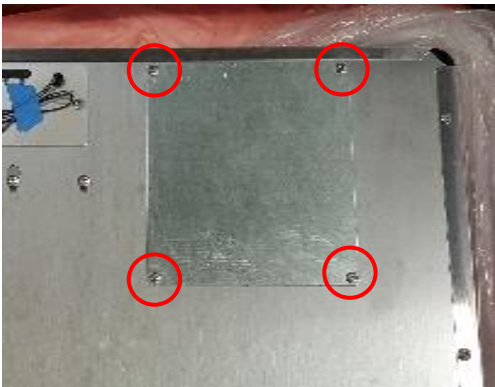


## IDC PRO 255 GLASS WRAPPER INSTALLATION INSTRUCTIONS

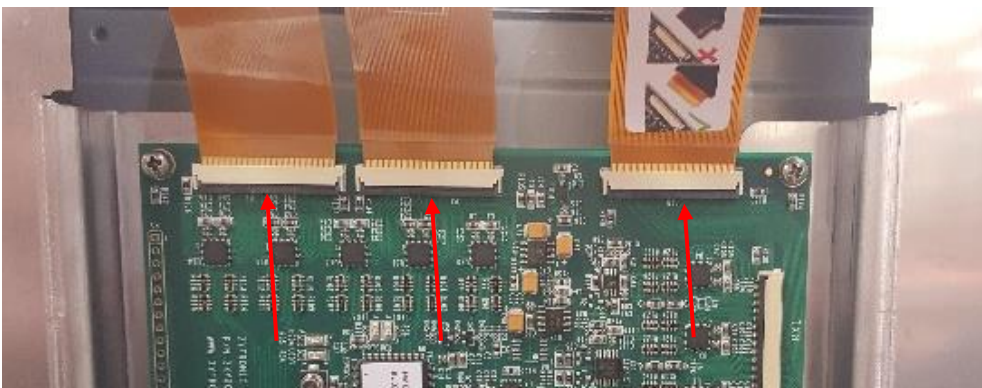
Step 1: Remove the screws holding the glass wrapper assembly to the door chassis and set screws aside for reuse. There are six screws on the back of the unit and two on the top (approximate location indicated with arrows below).



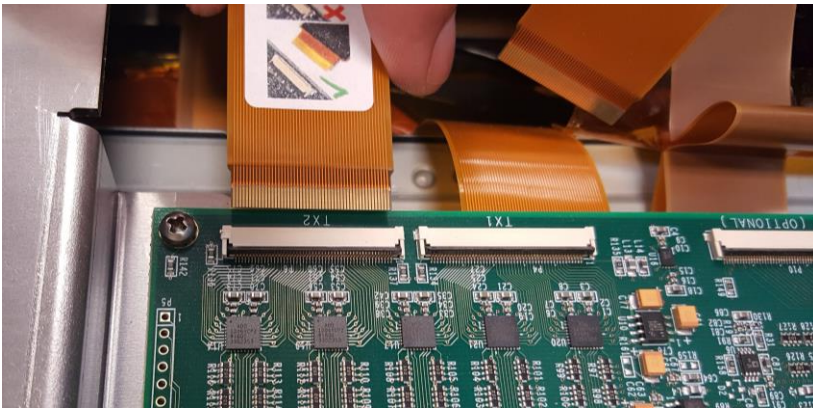
Step 2: Remove the four screws for the touch controller cover, remove cover, and set aside.



Step 3: Flip up the black tabs on the three ribbon connector clamps along the top edge of touch controller and CAREFULLY unplug each ribbon.



## IDC PRO 255 GLASS WRAPPER INSTALLATION INSTRUCTIONS



*Shown: ribbon unplugged from connector*

Step 4: Slide the glass wrapper assembly up and off of the door chassis, making sure the touch sensor ribbons slip cleanly out through the gap on the inside of the door chassis.



Step 5: Slide the new glass wrapper assembly onto the door chassis, taking special care to slip the touch sensor ribbons through the same gap as the original ribbons. CAREFULLY insert the touch sensor ribbons on the touch controller and lock in place. Complete the previous steps in reverse order to finalize reassembly.

**Note:** Be sure to CAREFULLY reinsert the touch sensor ribbons. Verify that they are fully engaged and seated properly (connector should be straight). These are very delicate, and damaging them could render the touch sensor permanently unresponsive.