

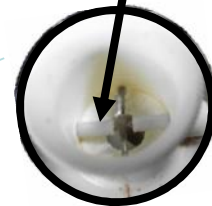
Quest Elite Sold-out Operations Guide

The sold out system on the Quest Elite is closed loop circuit,. With the concentrate covering the pins, the circuit closes thus extinguishing the refill light. Once the concentrate container is emptied the pins are exposed opening the circuit illuminating the refill indicator.



It is extremely important that these pins stay cleaned and free of any accumulated concentrate to maintain good conductivity.

The flush feature on the platform DOES NOT clean this area. It must be done manually.



Some concentrates do not have sufficient conductivity to allow the circuit to close thus the refill light stays on even with a full concentrate container . This is particularly true of some of the non citrus juices such as cranberry. Because this system is a closed loop pulling the sold-out connector off the corresponding board WILL NOT solve the problem.



Easy Guide to Jumping out the refill light

For this to work the brix calibration must be done with pump motor in the high speed position. The high speed setting is recommended for all juice concentrates

Step 1:

With the electrical box removed, find the corresponding VRB board. They are numbered starting from left to right. Remove the 2 pin connector from the board as shown. The position is labeled “speed” on the board itself.



Step 2:

Remove the 2 pin connector from the bottom of the board. It is the second one in from the left labeled “Sold out”



Step 3:

Replace the sold out connector with the 2 pin speed connector from step 1.



Step 4:

Place the speed switch into low as shown. This will permanently close the circuit deactivating the refill light without any physical damage to the e-box wiring.

