

Bowl & Gasket Assembly

MODELS EJ-1, JR2 & J15

JET SPRAY COOLERS

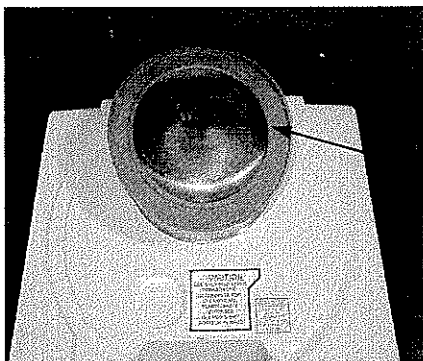


Figure 1-1

WET GASKET THOROUGHLY

Place gasket with raised print up.

Push gasket flat against tray.

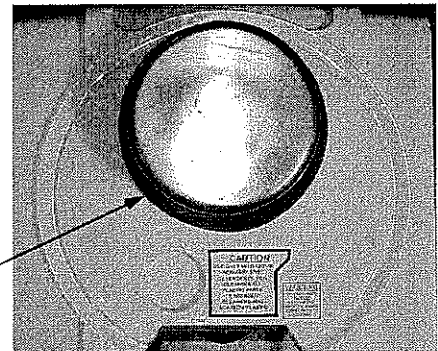


Figure 1-2

Step 1:

After unpacking, set chassis on counter in desired position allowing for adequate ventilation on each side of the unit. Be sure your **Jet Spray** dispenser is level. Wash the bowl (see outline in the owner's manual). Wash all other parts belonging to the bowl assembly. **WET GASKET THOROUGHLY** and place it around the stainless steel dome with the printed side facing up (figure 1-1). Push the gasket down to the condensate tray (figure 1-2). The gasket **must** lay flat against the dome and tray.

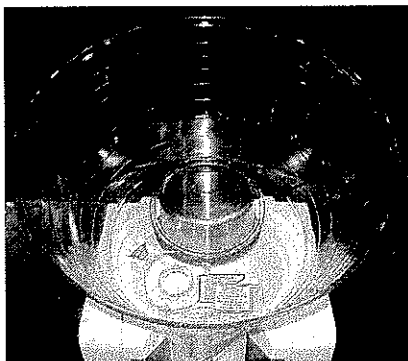


Figure 2-1

Place bowl over dome.

Push bowl flat against gasket and tray.

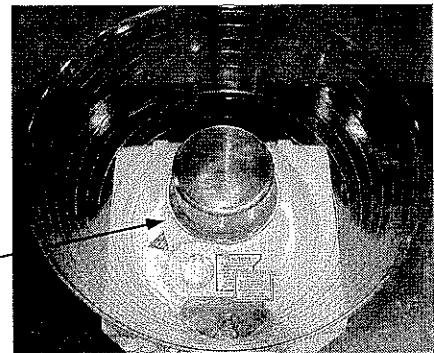


Figure 2-2

Step 2:

Place the bowl over the stainless steel dome with the decals facing the front of the unit (figure 2-1). Push the bowl straight down over the dome and onto the gasket. Firmly press the bowl into place flat against the gasket and condensate tray (figure 2-2). The gasket is self-sealing and as long as the bowl is firmly in place no leaking should occur.

AND PLEASE REMEMBER...

It only takes a few minutes a day to clean the bowl and protect the flavor quality of your drink.