

INSTALLATION INSTRUCTIONS

FCB CORD KIT FOR V-SERIES 2 FLAVOR

The following instructions should be used for installation of a power cord for a V-Series 2 Flavor unit. Each kit will supply power to 1 unit.

Parts List

Item Number	Description	Qty
1	30 Amp Power Cord	1
2	Strain Relief	2

Tools Required

Phillips Screwdriver
Flat Screwdriver
Pliers



CAUTION – Only trained and certified electrical technicians should service this unit. ALL WIRING MUST CONFORM TO NATIONAL AND LOCAL CODES.



DANGER – To avoid possible serious injury or death the ELCB (earth leakage circuit breaker) must be installed in the electrical circuit of all units.



WARNING – To avoid possible electrical shock make sure the unit is properly grounded by connecting the earth ground cable, in the power cord to any connection in the machine marked with a ground symbol.



CAUTION – The wiring must be properly grounded and connected through a disconnect switch (slow-blow fuse or equivalent HVAC/R circuit breaker).

Electrical Requirements

Refer to the nameplate to determine the power requirements before connecting electrical power to the unit. Voltage across contactor terminals L1 and L2, with the compressor running, must be within voltage limits described in Table 1.

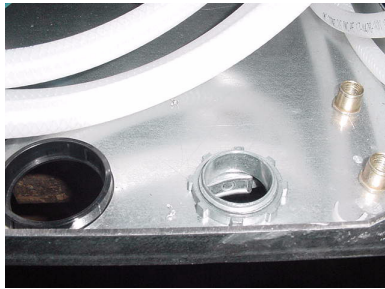
Table 1	
Unit	Requirements
V-Series 2 Flavor Integral Condense	208-230V, 60Hz, 30 Amp
V-Series 2 Flavor Water Condense	208-230V, 60Hz, 30 Amp

If the line voltage does not meet these requirements see the possible corrective actions in Table 2.

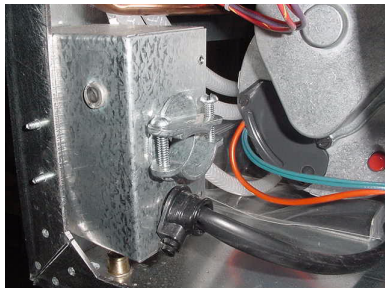
Table 2	
Voltage	Corrective Action
Below 180 VAC	Do Not Connect Unit
180-190 VAC	Boost voltage by +32 V
191-207 VAC	Boost voltage by +16 V
208-230 VAC	Use line voltage
231-246 VAC	Reduce voltage by –16 V
247-262 VAC	Reduce voltage by –32 V
Above 262 VAC	Do Not Connect Unit

Installation Steps

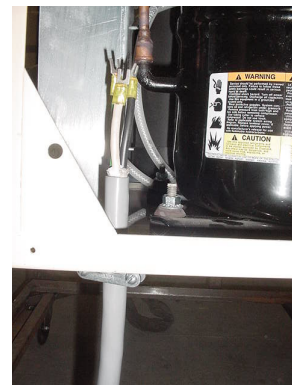
1. Switch the power to the unit off or remove the fuse to the electrical power circuit breaker.
2. Remove the back panel and the right side panel to gain access to the electrical area in the back of the unit.
3. For counter top units, remove the junction box cover to gain access to the power leads. For floor model units, remove the cover to the contactor box.
4. On both strain relief parts, loosen the screws until no threads show through the bottom.
5. Install the first strain relief to the bottom of the unit.



6. Install the second strain relief to the side of either the junction box or the contactor box.

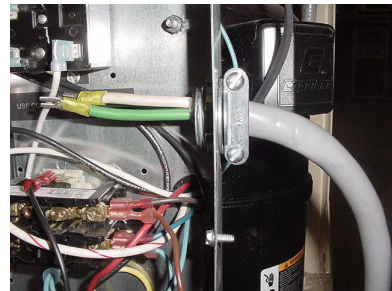
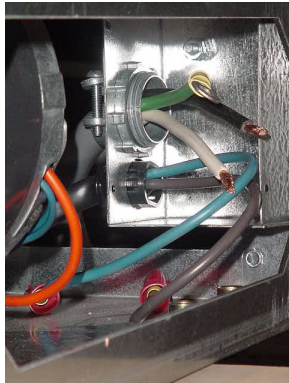


7. Feed the power cord through the first strain relief, lead end first, from the outside of the unit to the inside of the unit.

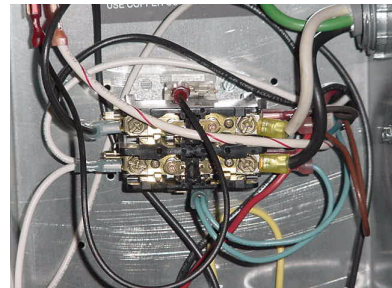


8. Pull the power cord to the second strain relief.

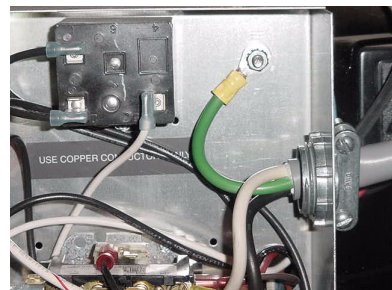
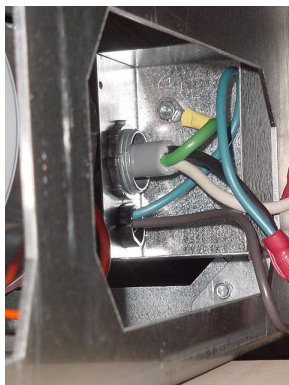
9. Feed the power cord through the second strain relief from the side into the junction box/contactor box.



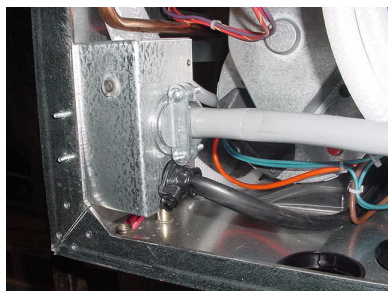
10. For counter top units, attach the black and white leads from the power cord to the brown and blue power leads from the unit. For floor model units attach the black and white leads from the power cord to the right side of the compressor contactor.



11. Remove the top ground nut from the ground stud. Slip the ring of the green ground lead over the ground stud and secure it by tightening the ground nut.



12. Pull the slack out of the power cord through the side of the junction box/contactator box and tighten the strain relief on the side of the junction box/contactator box.



13. Pull the slack out of the power cord through the back of the unit and tighten the strain relief on the outside of the unit.



14. Replace the cover to the junction box/contactator box.
15. Replace the back panel and left side panel.