

INSTALLATION INSTRUCTIONS

Quest Wire Cup Locator

SAFETY INSTRUCTIONS

 **WARNING:**

Before starting installation, read and understand all safety label and warnings on the machine. Also review and understand all safety instructions in the owners, installation and service manuals.

Failure to comply could result in serious injury, death or damage to the equipment.

QUALIFIED SERVICE PERSONNEL

 **WARNING:**

Only trained and certified electrical, plumbing and refrigeration technicians should service this unit.

All wiring and plumbing must conform to national and local codes. Failure to comply could result in serious injury, death or equipment damage.

SAFETY PRECAUTIONS

This unit has been specifically designed to provide protection against personal injury. To ensure continued protection observe the following:

 **WARNING:**

Disconnect power to the unit before servicing. Follow all lock out/tag out procedures established by the user. Verify all power is off to the unit before performing any work.

Failure to comply could result in serious injury, death or damage to the equipment.

 **CAUTION:**

Always be sure to keep area around the unit clean and free of clutter.

Failure to keep this area clean may result in injury or equipment damage.

INSTALLATION INSTRUCTIONS

1. Insert the top of the Cup Locator (part number 720701802 QST 4000; part number 720701801 QST 2000) into each hole in the Splash Panel as Shown (Figure 1.)

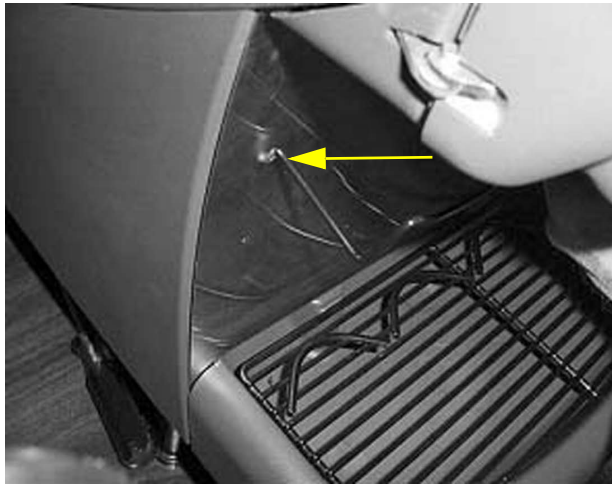


Figure 1.

2. Rotate the Locator towards the Splash Panel and allow it to rest as shown (Figure 2.)

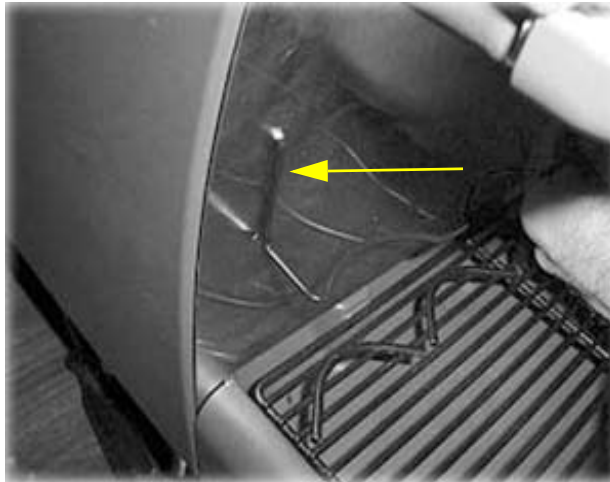


Figure 2.

3. The part should rest and be located as shown (Figure 3.)



Figure 3.

4. Cup position shown from the side view (Figure 4.)
5. Cup position shown from the front view (Figure 5.)



Figure 4.

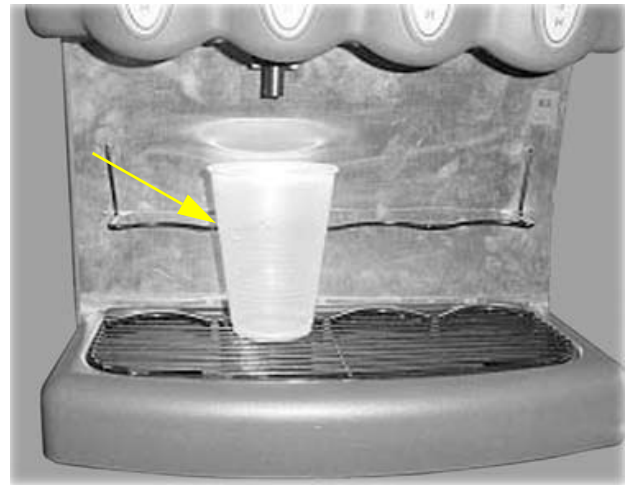


Figure 5.