



---

# **INSTALLATION INSTRUCTIONS**

## **Rework Cabinet Water Return Line Quest**

**Release Date: January 10, 2011**

**Publication Number: 729011140INS**

**Revision Date: March 24, 2014**

**Revision: E**

Visit the Cornelius web site at [www.cornelius.com](http://www.cornelius.com) for all your Literature needs.

---

The products, technical information, and instructions contained in this manual are subject to change without notice.

These instructions are not intended to cover all details or variations of the equipment, nor to provide for every possible contingency in the installation, operation or maintenance of this equipment. This manual assumes that the person(s) working on the equipment have been trained and are skilled in working with electrical, plumbing, pneumatic, and mechanical equipment. It is assumed that appropriate safety precautions are taken and that all local safety and construction requirements are being met, in addition to the information contained in this manual.

This Product is warranted only as provided in Cornelius' Commercial Warranty applicable to this Product and is subject to all of the restrictions and limitations contained in the Commercial Warranty.

Cornelius will not be responsible for any repair, replacement or other service required by or loss or damage resulting from any of the following occurrences, including but not limited to, (1) other than normal and proper use and normal service conditions with respect to the Product, (2) improper voltage, (3) inadequate wiring, (4) abuse, (5) accident, (6) alteration, (7) misuse, (8) neglect, (9) unauthorized repair or the failure to utilize suitably qualified and trained persons to perform service and/or repair of the Product, (10) improper cleaning, (11) failure to follow installation, operating, cleaning or maintenance instructions, (12) use of "non-authorized" parts (i.e., parts that are not 100% compatible with the Product) which use voids the entire warranty, (13) Product parts in contact with water or the product dispensed which are adversely impacted by changes in liquid scale or chemical composition.

### **Contact Information:**

To inquire about current revisions of this and other documentation or for assistance with any Cornelius product contact:

**[www.cornelius-usa.com](http://www.cornelius-usa.com)**

**800-238-3600**

### **Trademarks and Copyrights:**

This document contains proprietary information and it may not be reproduced in any way without permission from Cornelius.

This document contains the original instructions for the unit described.

CORNELIUS INC  
101 Regency Drive  
Glendale Heights, IL  
Tel: + 1 800-238-3600

Printed in U.S.A.

# SAFETY INSTRUCTIONS

## SAFETY

### WARNING:

Before starting installation, read and understand all safety label and warnings on the machine. Also review and understand all safety instructions in the owners, installation and service manuals.

**Failure to comply could result in serious injury, death or damage to the equipment.**

## QUALIFIED SERVICE PERSONNEL

### WARNING:

Only trained and certified electrical, plumbing and refrigeration technicians should service this unit.

**All wiring and plumbing must conform to national and local codes. Failure to comply could result in serious injury, death or equipment damage.**

## SAFETY PRECAUTIONS

This unit has been specifically designed to provide protection against personal injury. To ensure continued protection observe the following:

### WARNING:

Disconnect power to the unit before servicing. Follow all lock out/tag out procedures established by the user. Verify all power is off to the unit before performing any work.

**Failure to comply could result in serious injury, death or damage to the equipment.**

### CAUTION:

Always be sure to keep area around the unit clean and free of clutter.

**Failure to keep this area clean may result in injury or equipment damage.**

# INSTALLATION INSTRUCTIONS

## TOOLS REQUIRED:

1. Short Phillip Screw Driver (1 ½" long)
2. Knife
3. Ratchet with ¼" Socket or Oetiker Pliers with side crimpers.

## INSTALLATION:

1. Remove Splash Panel.
2. Drain water from Ice Bath.
3. Turn OFF water.
4. Disconnect water inlet line from rear of unit.
5. To assist in melting partial ice to provide clearance for new Stainless Steel Return Line, do as follows :
  - A. Re-fill Ice Bath using water inlet line.
  - B. Connect unit to power.
  - C. Disconnect unit from power when Compressor turns ON.
  - D. Reconnect unit to power.
  - E. Disconnect unit from power when Compressor turns ON.
6. Rotate unit to allow access to rear of unit.
7. Remove top panel and rear panel.
8. Remove thumb screw from the agitator to remove the braided tube. Lift the agitator up and push it back counter clockwise.
9. Remove cabinet water return line from ice bath, by pulling it up through the hole it is routed into. This is the braided tube on the right side of the Agitator Motor.
10. Remove mounting screw shown in Figure 1. (item 16), and discard.

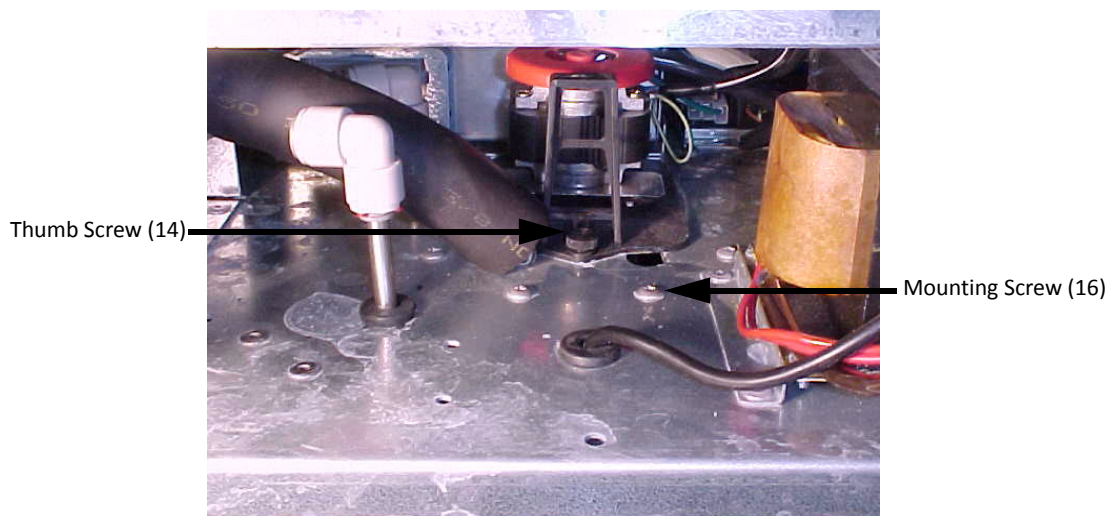


Figure 1.

- 11. Remove Wire routing clip.
- 12. Install the Stainless Steel Return Line.



Figure 2.

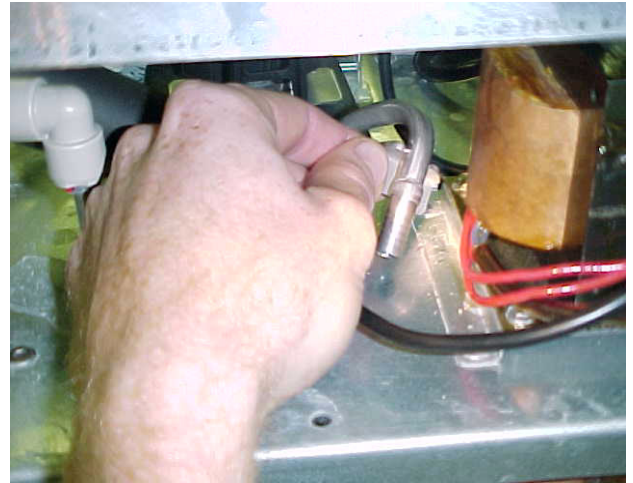


Figure 3.

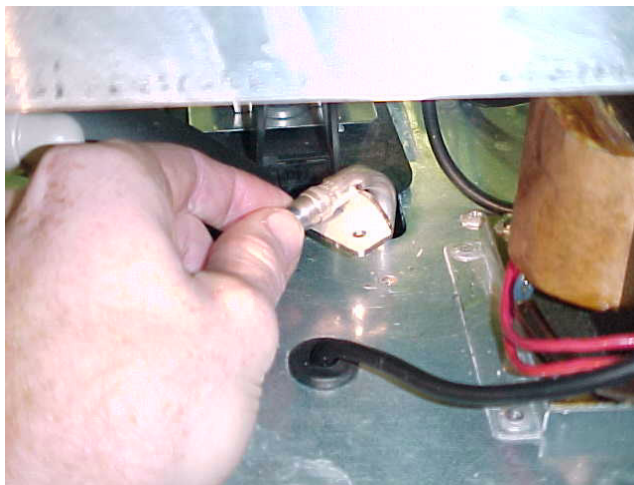


Figure 4.

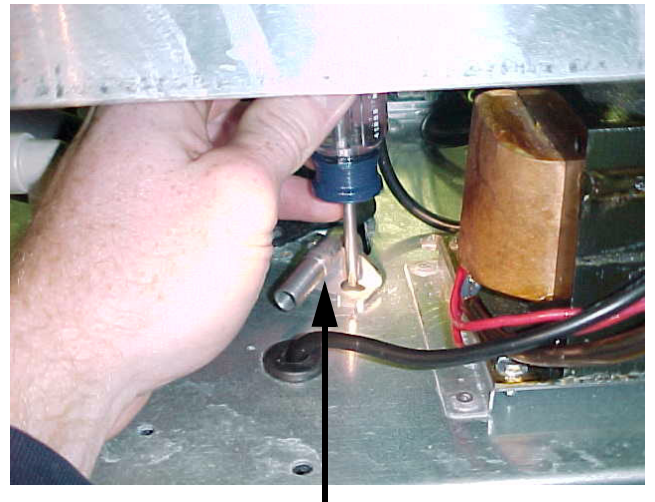


Figure 5.

- 13. Secure Stainless Steel Return Line with the new screw provided and replace thumb screw.
- 14. Cut braided tube to be flush with Insulation.

15. Install hose clamp or oetiker clamp on braided tube.



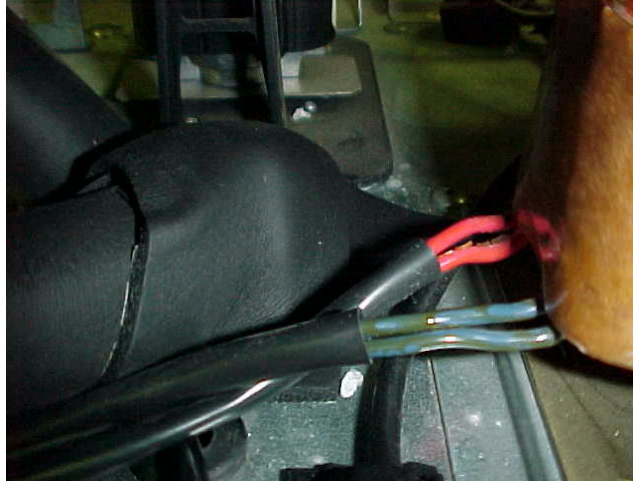
**Figure 6.**

16. Install braided tube on to barb fitting on Stainless Steel Return Line and tighten hose clamp or crimp oetiker clamp.
17. Connect unit to power. Check for water leaks.
18. Disconnect unit from power.
19. Install new Wire routing clip, that was removed in step 17, and secure probe wire in it.
20. Slide insulation to bracket securing Stainless Steel Return Line to Tank Cover.



**Figure 7.**

21. With insulation from kit insulate exposed Stainless Steel Return Line.



**Figure 8.**

22. Install Rear Panel and Top Panel.
23. Rotate unit to operating position.
24. Check Ice Bath water level.
25. Connect water inlet line to rear of unit.
26. Connect unit to power.
27. Install Splash Panel and Drip Tray.
28. Clean the area.







**Cornelius Inc.**  
**[www.cornelius.com](http://www.cornelius.com)**