

INSTALLATION INSTRUCTIONS

FOR ICE MAKER ADAPTER KIT P/N 6209083002 FOR MODEL ED300 DISPENSER & THE FOLLOWING ICE MAKER MODEL: (2) WILSHIRE WCC700

Item No.	Part No.	Name	Qty.
1	620031101	Lid	1
2	22128	Ice Maker Mounting Bracket	2
3	50904	RTV 3 Oz. Tube	2
4	620031112	Manual Ice Fill Cover	1
5	91957	Label, "Disconnect Power Before Cleaning"	1
6	620908602	Installation Instructions	1
7	22127	Ice Maker Mounting Bracket	2
8	620701601	#10 x 1/222 Lg. Sheet metal Screw	20
9	70188	#8-32 x 1/222 Lg. Thumbscrew	3
10	620911601	Label, Manual Ice Fill	1

**WARNING:**

Disconnect power to the unit before installing the adaptor following all lockout/tag out procedures established by the user. Verify that all the power is off to the unit before performing any work.

Failure to comply could result in serious injury, death or damage to the equipment.

**WARNING:**

All ice baffle plates and bin stats, if included or recommended in this kit, must be installed as directed in this manual or the equipment manufacturer's instructions.

Failure to comply could result in serious injury, death or damage to the equipment.

**WARNING:**

All of the attachment screws and plates must be installed as directed in this manual.

Failure to comply could result in serious injury, death or damage to the equipment.

**WARNING:**

The dispenser must be secured with 3/8-16 bolts (6) to the counter before installing this ice maker adapter kit. Refer to the installation manual and Figure 2 for the counter mounting template.

1. Remove the top plastic bin covers (2) from the dispenser and discard.
2. Refer to Figure 3 for adjusting the automatic agitation timer:
 - A. Remove the upper front panel/merchandise from the dispenser.
 - B. Loosen/rotate the top (2) mounting screws that secure the white reflector panel/electrical control box cover in place and lower the cover to expose the automatic agitation timer.
 - C. Adjust the timer to 1 second on and 1 hour off as shown in Figure 3.
 - D. Secure the electrical control box cover in place and install the upper front panel/merchandise.
3. Place the ice maker adapter lid on top of the dispenser as shown in Figure 1.
4. Using the slotted holes in the lid as a template, drill (4) 0.147" diameter holes (#26 drill) at the bottom of the slots (see Figure 1, Detail A). **BE CAREFUL NOT TO DRILL INTO THE ICE STORAGE BIN.** Secure the lid to the dispenser with (4) #10 sheet metal screws.

5. Seal the ice makers to the dispenser lid as follows (see Figure 1):
 - A. Run a bead of RTV inside each of the ice maker perimeter outlines on the lid so that both ice makers set on the RTV.
 - B. Set the ice makers onto the lid and position them as shown in Figure 1.
 - C. Wipe away any excess RTV.
6. Drill 0.147" diameter holes into the ice maker cabinet and the dispenser lid using the ice maker mounting brackets as templates. **Use caution so as not to drill into any ice maker components (condenser, tubing, etc.).** Secure the brackets using the #10 sheet metal screws provided.
7. Follow the ice maker instructions to complete the installation of the ice makers including the bin thermostat if so equipped or required.

**CAUTION:**

The bin thermostat location must not interfere with the agitator rotation.

8. Install the caution label (item 5) and manual fill label (item 10) on the manual ice fill cover (item 4) as shown in Figure 1. Secure the cover in position on the lid over the center bin access opening with the three thumbscrews (item 9).

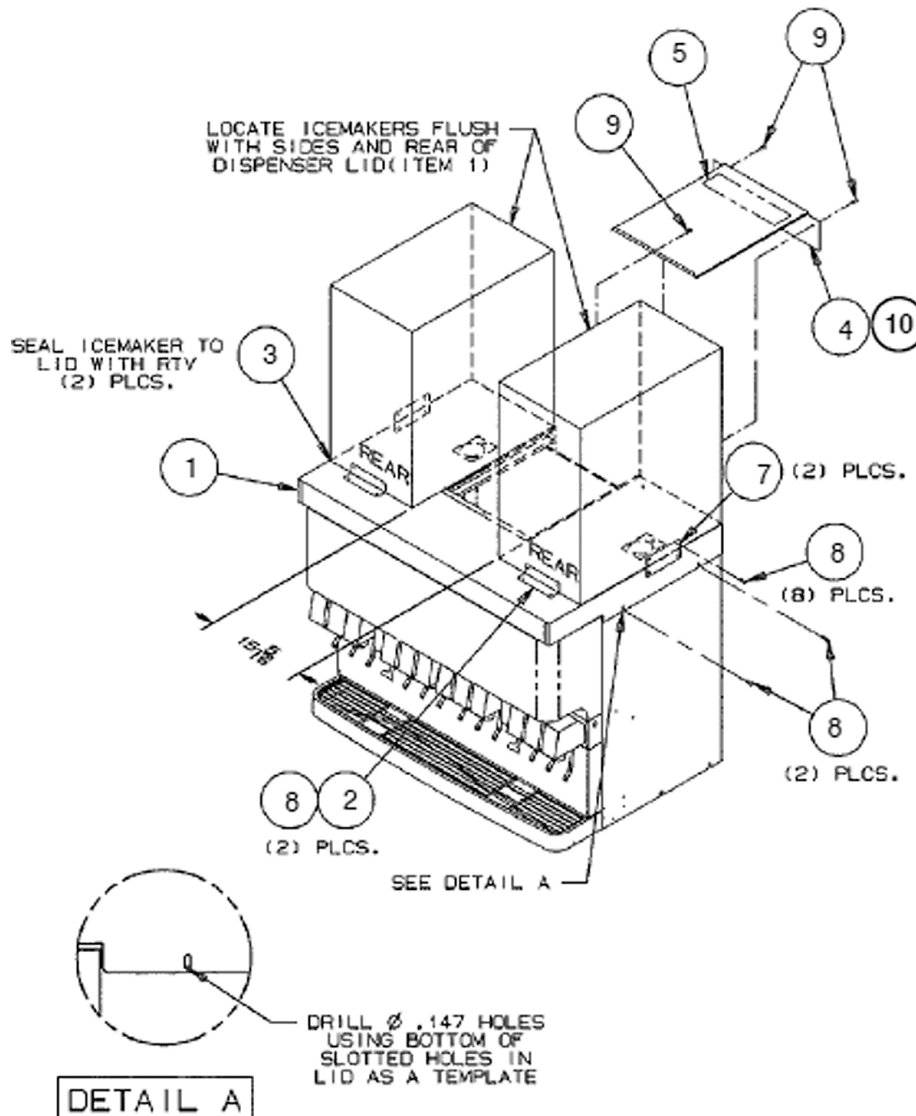
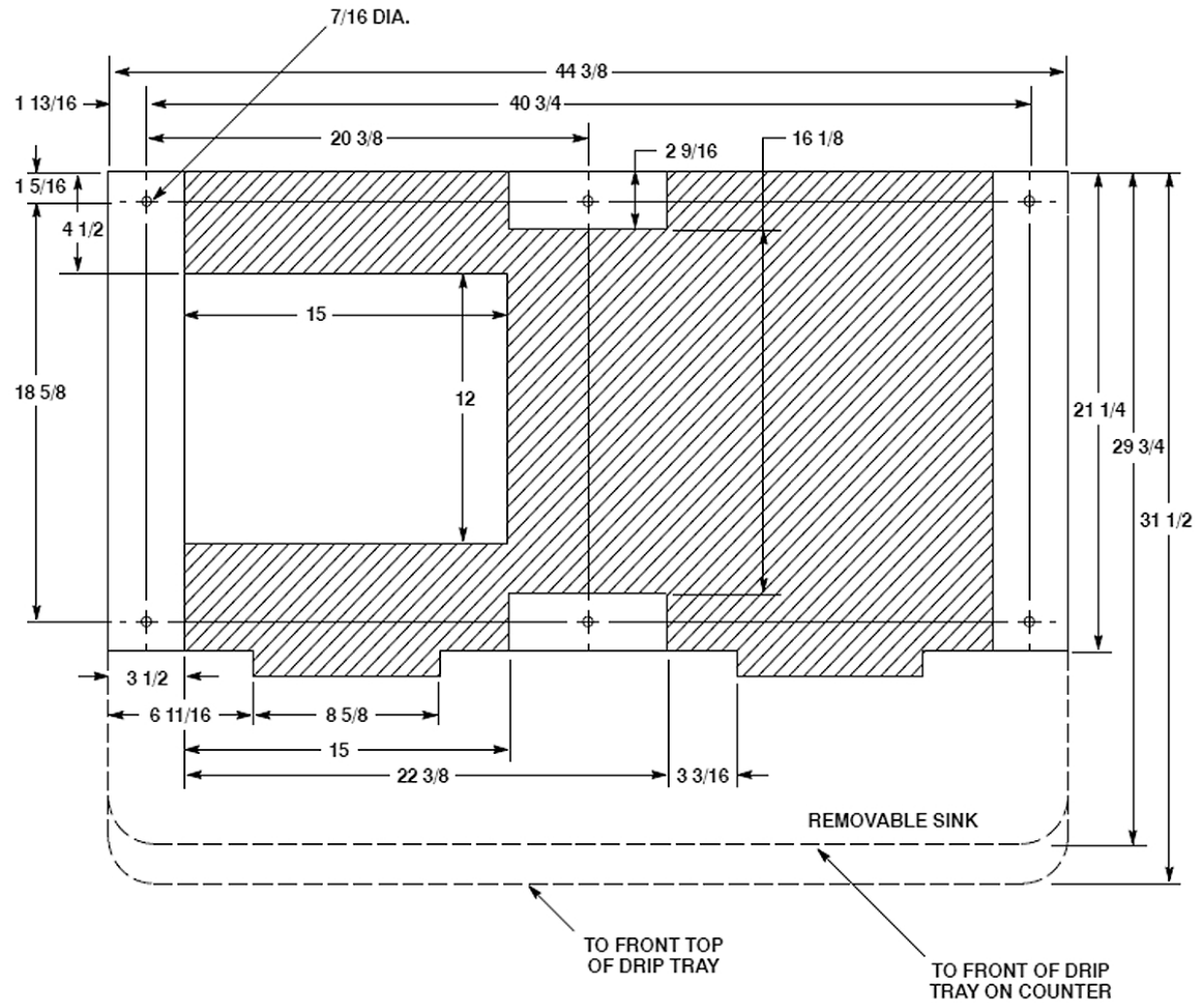


Figure 1. Ice Maker Adapter Kit



NOTE: Recommended counter opening size 12 x 15 for utilities and beverage tubing. Opening can be located anywhere within the shaded area.

Figure 2. Mounting Template

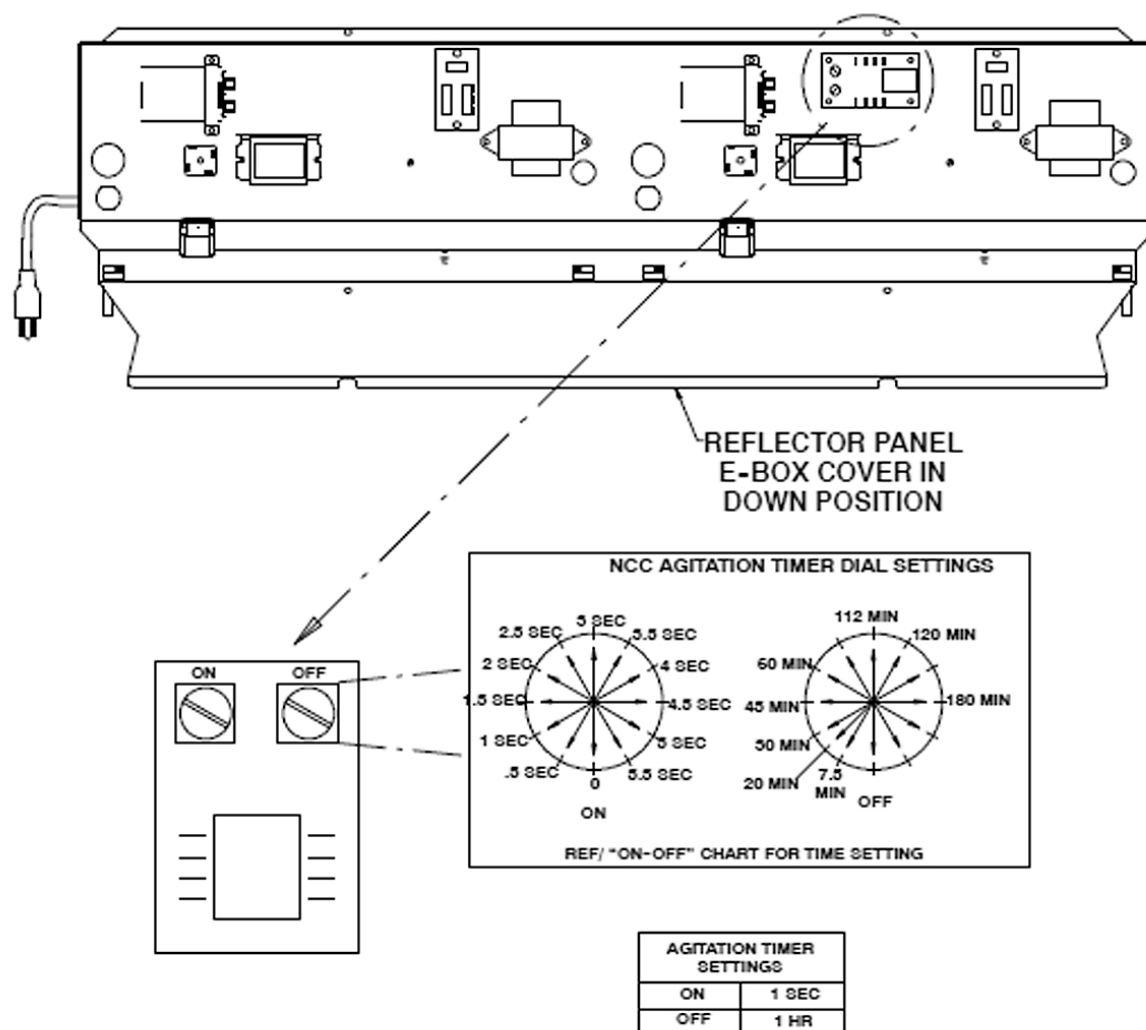


Figure 3. Agitator Timer