



INSTALLATION INSTRUCTIONS

FOR ICE MAKER ADAPTER KIT, P/N 629083001 FOR MODEL ED300 DISPENSER

Table 1: Applicable Ice Maker Models

Manufacturer	Model
Cornelius	I1230
Ice-O-Matic	C106
Manitowoc	QY1094N

Item No.	Part No.	Name	Qty.
1	620031301	Lid	1
2	22128	Ice maker Mounting Bracket	2
3	50904	RTV. 3 Oz. Tube	2
4	620031307	Manual Ice Fill Cover	2
5	91957	Label, "Disconnect Power Before Cleaning"	2
6	620908601	Installation Instructions	1
7	620701601	#10 x 1/2" Lg. Sheet metal Screw	12
8	70188	#8-32 x 1/2" Lg. Thumbscrew	4
9	50316	Insulation Strip 1/8" TK. x 1/2" Wide	45"
10	620911601	Label, Manual Ice Fill	2

**WARNING:**

Disconnect power to the unit before installing the adaptor following all lockout/tag out procedures established by the user. Verify that all the power is off to the unit before performing any work.

Failure to comply could result in serious injury, death or damage to the equipment.

**WARNING:**

All ice baffle plates and bin stats, if included or recommended in this kit, must be installed as directed in this manual or the equipment manufacturer's instructions.

Failure to comply could result in serious injury, death or damage to the equipment.

**WARNING:**

All of the attachment screws and plates must be installed as directed in this manual.

Failure to comply could result in serious injury, death or damage to the equipment.

**WARNING:**

The dispenser must be secured with 3/8-16 bolts (6) to the counter before installing this ice maker adapter kit. Refer to the installation manual and Figure 2 for the counter mounting template.

1. Remove the top plastic bin covers (2) from the dispenser.
2. Place the ice maker adapter lid on top of the dispenser as shown in Figure 1.
3. Using the slotted holes in the lid as a template, drill (4) 0.147" diameter holes (# 26 drill) at the bottom of the slots (see Figure 1, detail A). **Be careful not to drill into the ice storage bin.** Secure the lid to the dispenser with (4) #10 sheet metal screws.
4. Seal the ice maker to the dispenser lid as follows (See Figure 1).

- A. Run a bead of RTV around the opening in the lid and inside the perimeter of the ice maker outline so that the ice maker sets on the RTV.
 - B. Set the ice maker onto the lid and position it as shown in Figure 1.
 - C. Wipe away any excess RTV.
5. Drill 0.147" diameter holes into the ice maker cabinet and the dispenser lid using the ice maker mounting brackets as templates. **Use caution so as not to drill into any ice maker components (condenser, tubing etc).** Secure the brackets using the #10 sheet metal screws provided.
 6. Follow the ice maker instructions to complete the installation of the ice maker including the bin thermostat if so equipped or required.



CAUTION:

The bin thermostat location must not interfere with the agitator rotation

7. Install the insulation strip (item 9) and the caution label (item 5) and manual ice fill labels (item 10) on the manual ice fill cover (item 4) as shown in Figure 1. Secure the cover in position on the lid over the side bin access opening with the thumbscrew (item 8). Note that the insulation strip should be compressed against the ice maker cabinet to form a seal with the cover secured in position.

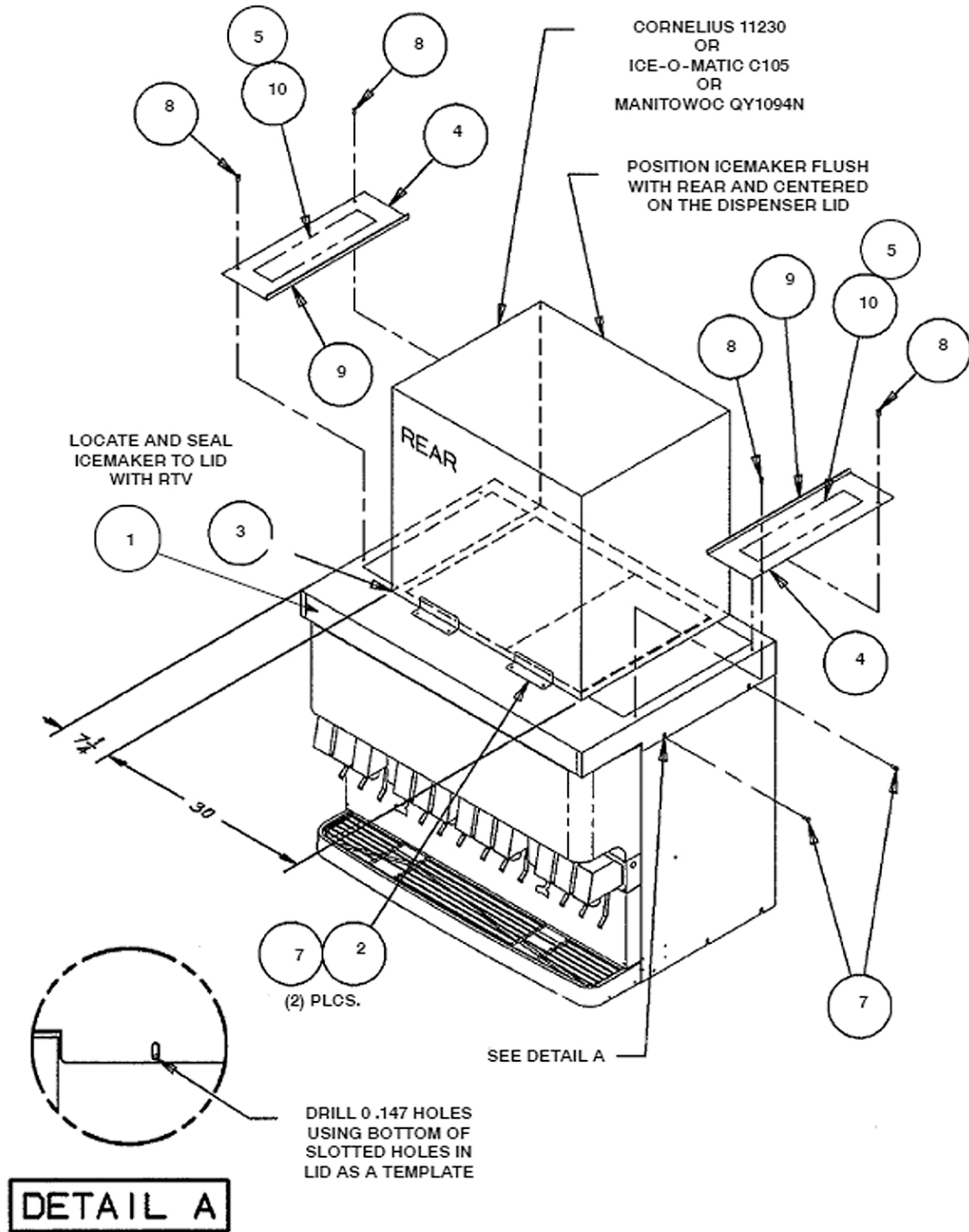
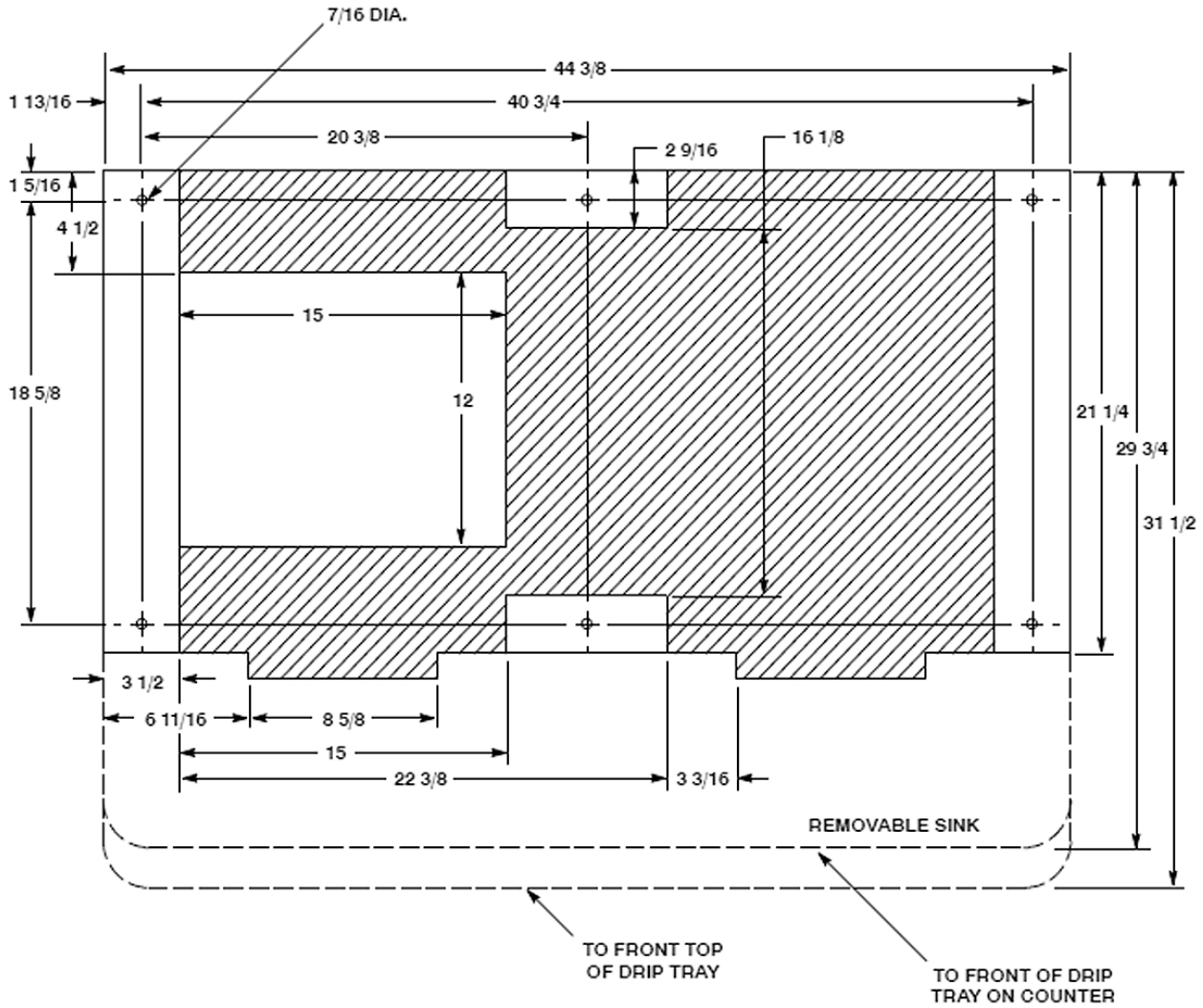


Figure 1.



NOTE: Recommended counter opening size is 12 x 15 for utilities and beverage tubing. Opening can be located anywhere within the shaded area.

Figure 2. Mounting Template