

INSTALLATION INSTRUCTIONS

ED300 ICE MAKER ADAPTER KIT (P/N 629087952)

This adapter kit is for the following ice maker:

Table 1. Applicable Models

Ice Maker	Width
Cornelius Xtreme Series X1444/1844	44"

Table 2. Parts List

Item No.	Part Number	Description	Qty.
1	620043570	Ice Maker Adapter Lid	1
2	620048806	Service Access Cover	1
3	620042919	Ice Baffle ED300	1
4	22127	Ice Maker Mounting Bracket	2
5	70250	1/4-20 X 1/2" Screw	2
6	620701601	#8 X 1/2" Sheet Metal Screw	8
7	620701902	#8-32 Nylon Acorn Nut	4
8	620701901	Sealing Washer	4
9	620701903	#8 Nylon Washer	4
10	631500099	Binstat Kit	1
11	620919566INS	Installation Instructions	1

⚠ WARNING:

Disconnect power to the unit before installing the adaptor following all lockout/tag out procedures established by the user. Verify that all the power is off to the unit before performing any work.

Failure to comply could result in serious injury, death or damage to the equipment.

⚠ WARNING:

All ice baffle plates and bin stats, if included or recommended in this kit, must be installed as directed in this manual or the equipment manufacturer's instructions.

Failure to comply could result in serious injury, death or damage to the equipment.

⚠ WARNING:

All of the attachment screws and plates must be installed as directed in this manual.

Failure to comply could result in serious injury, death or damage to the equipment.

⚠ WARNING:

The dispenser must be secured with 3/8-16 bolts (6) to the counter before installing this ice maker adapter kit. Refer to the installation manual and Figure 2 for the counter mounting template.

Refer to Figure 1 for the following procedure:

1. Remove the plastic ice storage hopper covers (2) that were shipped with the unit.
2. Remove the (2) screws from each side of the dispenser cabinet. Position the ice maker adapter lid on the dispenser and use the (4) cabinet screws to secure the lid to the cabinet.
3. Install the ice baffle (item 4) to the adapter lid as shown in Figure 1.



4. Remove the ice maker front panel and position the ice maker on the gasket provided on the adapter lid. The ice maker should be flush with the rear of the adapter lid. **Important: Do not slide the ice maker into position on the lid. Lift and set the ice maker base onto the adapter lid to avoid damaging the gasket seal.**
5. Using the ice maker mounting brackets (item 5) as templates, drill 0.147" diameter holes (drill size 26) into the ice maker cabinet and the adapter lid. **Use caution so as not to drill into any ice maker component (condenser, tubing, ETC.).** Secure the mounting brackets to the ice maker and adapter lid with the #10 sheet metal screws (item 7) provided in the kit.
6. Follow the ice maker manufacturer's instructions provided with the bin thermostat kit to install the support rod on the ice maker base and to route the thermostat capillary tube. **Important: The bin thermostat support rod and capillary tube must not interfere with agitator rotation.** Complete the ice maker installation procedure.
7. Check that the automatic agitation timer located in the dispenser's electrical control box is set for automatic fill cube ice. The control box is located behind the merchandiser. Remove the merchandiser by lifting up on the sides to disengage the mounting "hooks" from the cabinet slots and rotating forward. Refer to the label in the control box for setting the agitation times.
8. Install the service access cover (item 2) on the adapter lid (item 1) with the 1/4-20 screws (item 6) provided in the kit. Check for proper operation of the door; it should be free to open by lifting up on the door handle to the left open position.
9. The unit is now ready for operation.

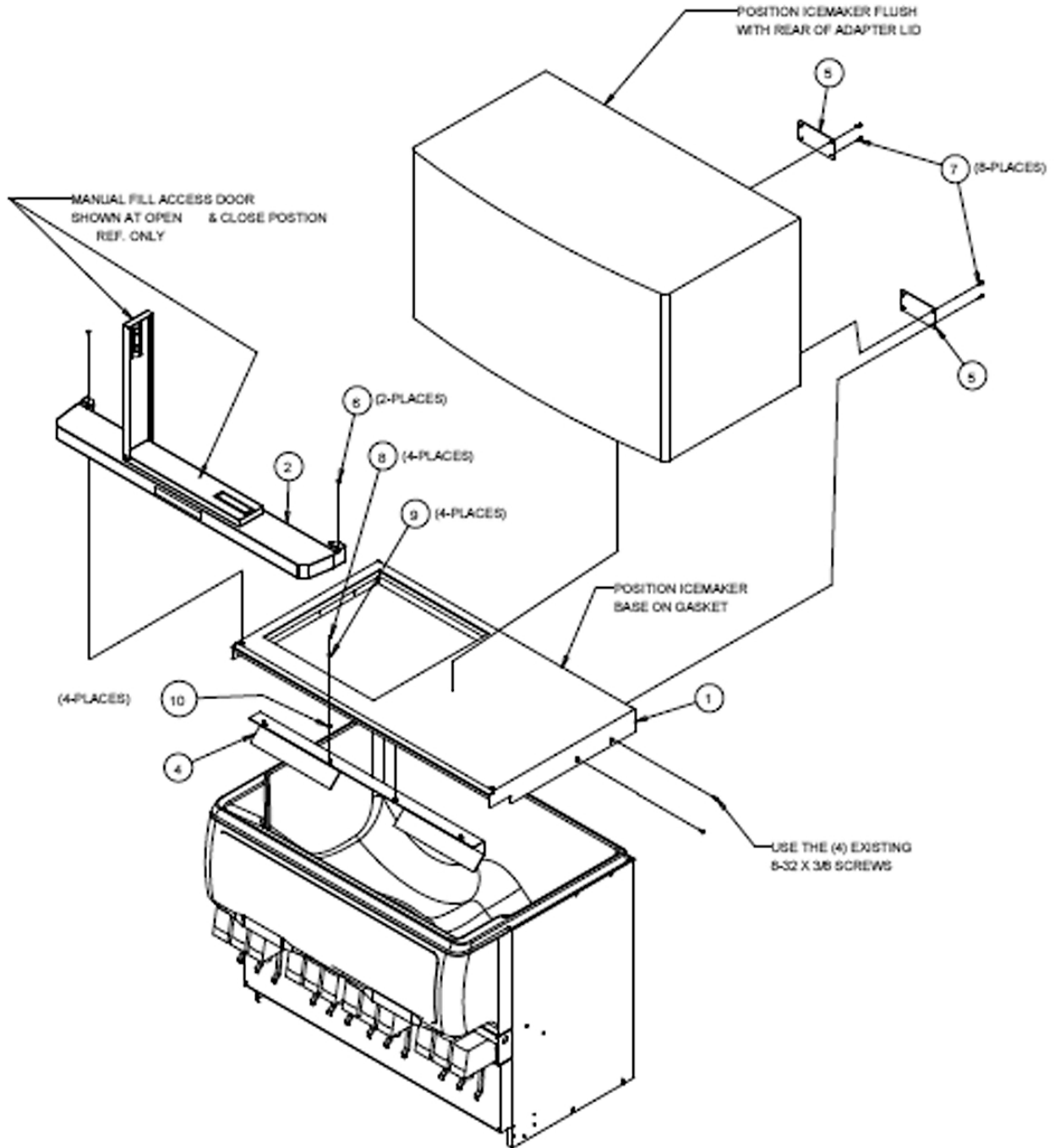
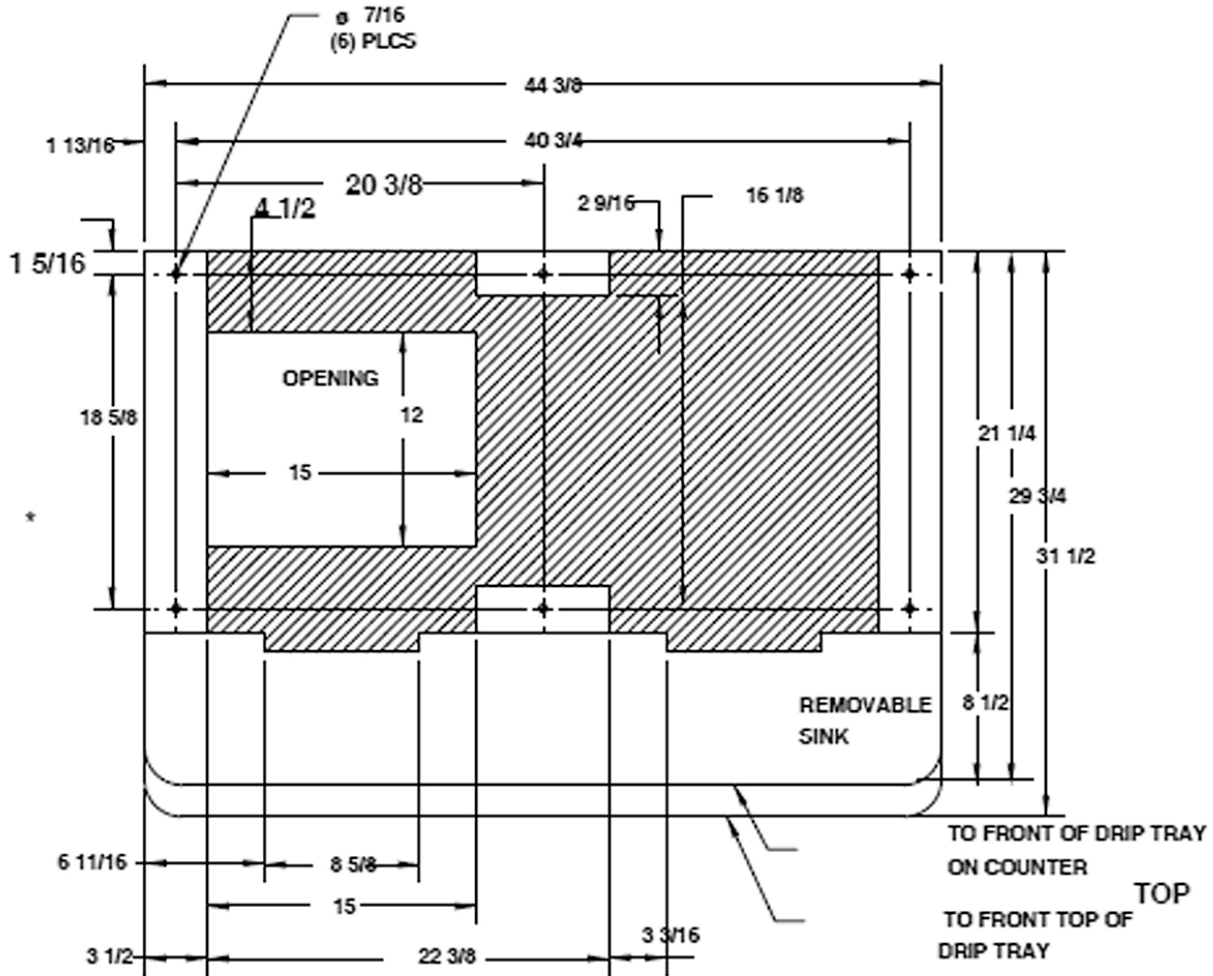


Figure 1. Exploded View of Ice maker Adapter Lid Assembly



NOTE: Recommended counter opening size 12" X 15" for utilities and beverage tubing.

Figure 2. Mounting Template