

# INSTALLATION INSTRUCTIONS

## ED300 ICEMAKER ADAPTER KIT (P/N 629087961)

**Table 1: Applicable Models**

Ice Maker	Width
Ice-O-Matic ICE1506	30"

**Table 2: Parts List**

Item No.	Part Number	Description	Qty.
1	620046133	Icemaker Adapter Lid	1
2	620517030	Manual Fill Door	1
3	620051215	Icemaker Mounting Bracket	2
4	50904	RTV Sealant 3 oz. Tube	1
5	620701601	# 8 x 1/2" Sheetmetal Screw	4
6	629087961INS	Installation Instructions	1

** WARNING:**

Disconnect power to the unit before servicing. Follow all lock out/tag out procedures established by the user. Verify all power is off to the unit before performing any work.

**Failure to comply could result in serious injury, death or damage to the equipment.**

** WARNING:**

All ice baffle plates and bin stats, if included or recommended in this kit, must be installed as directed in this manual or the equipment manufacturer's instructions.

**Failure to comply could result in serious injury, death or damage to the equipment.**

** WARNING:**

All of the attachment screws and plates must be installed as directed in this manual.

**Failure to comply could result in serious injury, death or damage to the equipment.**

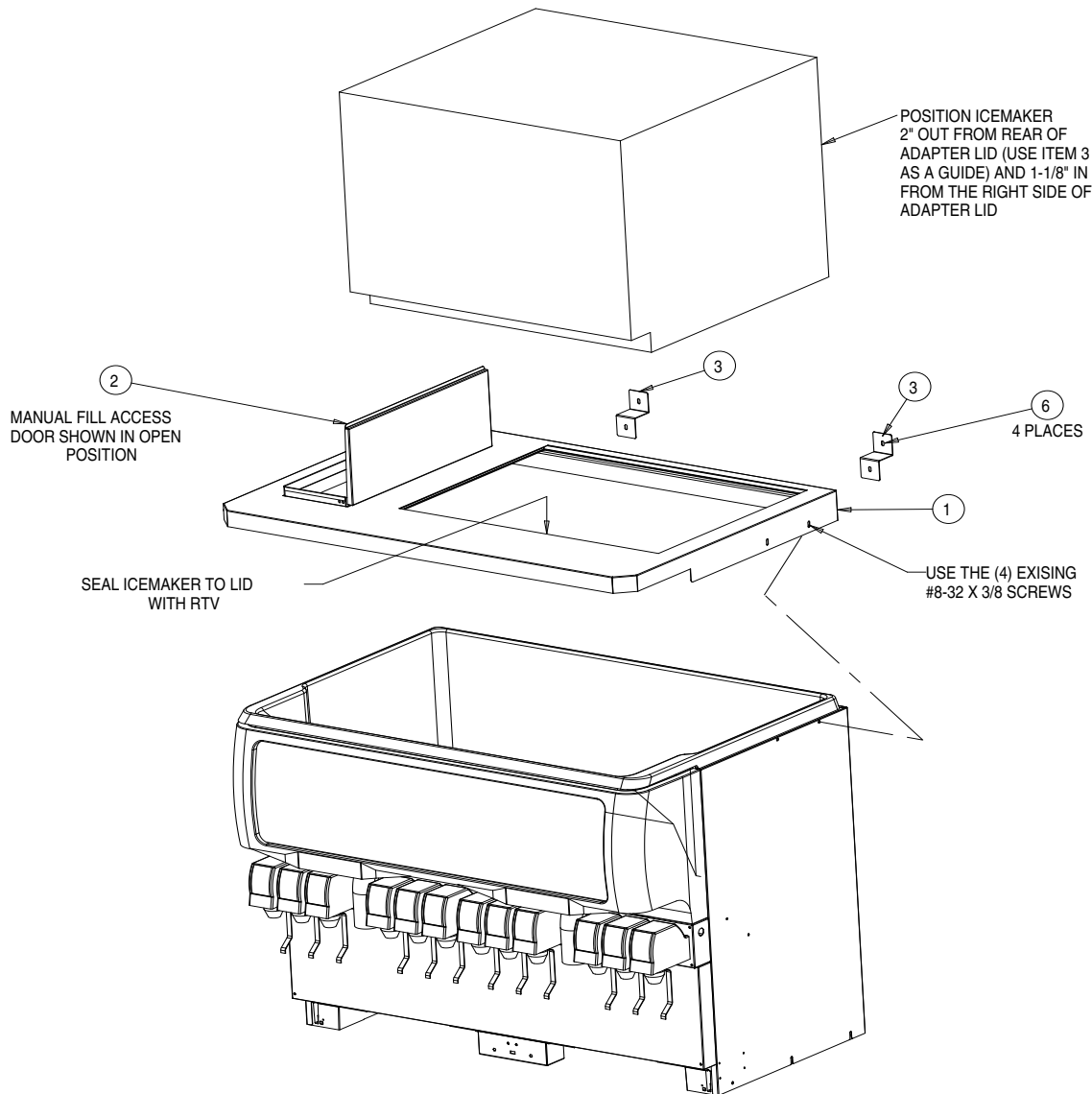
** WARNING:**

The dispenser must be secured with 3/8-16 bolts (6) to the counter before installing this ice maker adapter kit. Refer to the installation manual and Figure 2 for the counter mounting template.

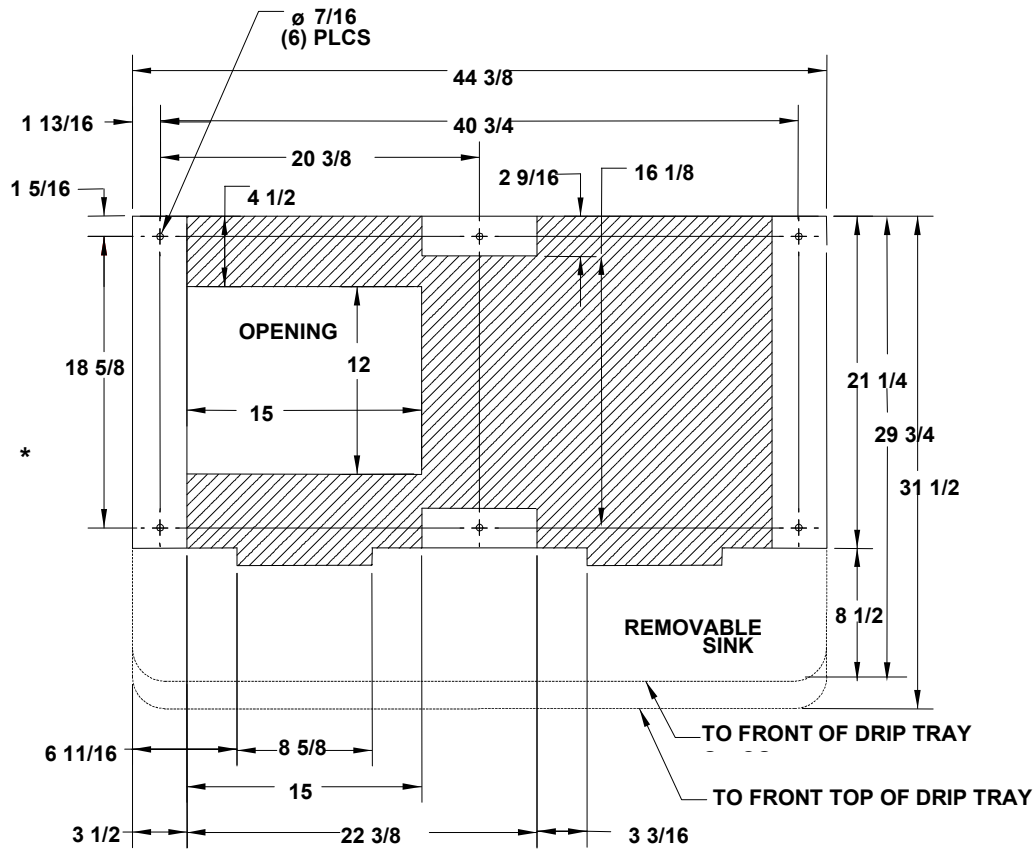
Refer to Figure 1 for the following procedure:

1. Remove the plastic ice storage hopper covers (2) that were shipped with the unit.
2. Remove the (2) screws from each side of the dispenser cabinet. Position the icemaker adapter lid on the dispenser and use the (4) cabinet screws to secure the lid to the cabinet.
3. Refer to Figure 1 to locate the icemaker on the adapter lid. The icemaker should be positioned 2" out from the rear and 1-1/8" in. from the right side of the adapter lid. Seal the icemaker base to the adapter lid by running a bead of RTV around the perimeter of the base on the lid. Set the icemaker onto the RTV. Wipe away any excess RTV.

4. Using the icemaker mounting brackets (item 3) as templates, drill .147 diameter holes (drill size 26) into the icemaker cabinet and adapter lid. **Use caution so as not to drill into any icemaker component (condenser, tubing, etc.).** Secure the mounting brackets to the icemaker and adapter lid with the # 10 sheetmetal screws (item 6) provided in the kit.
5. Follow the icemaker manufacturer's instructions to complete the icemaker installation. **Important: If a bin thermostat kit is installed, the thermostat capillary tube and mounting bracket must not interfere with agitator rotation.**
6. Check that the automatic agitation timer located in the dispenser's electrical control box is set for automatic fill cube ice. The control box is located behind the merchandiser. Remove the merchandiser by lifting up on the sides to disengage the mounting "hooks" from the cabinet slots and rotating forward. Refer to the label in the control box for setting agitation times.
7. Install the manual fill door (item 2) on the adapter lid (item 1). With the door in the open position, insert the hinge pins into the pivot brackets on the door frame. Check for proper opening and closing of the door.
8. The unit is now ready for operation



**Figure 1. Exploded View of Icemaker Adapter Lid Assembly**



**RECOMMENDED COUNTER OPENING SIZE 12" X 15" FOR UTILITIES AND BEVERAGE TUBING.**

Figure 2. Mounting Template