



INSTALLATION INSTRUCTIONS

ED/DF300 30" CCM1530 NORDIC SS STYLE LID KITS

This Nordic style kit applies to the Cornelius 30" wide CCM1530 ice maker.

Table 1. Loose Shipped Parts

Item No.	Part No.	Name	Qty.
1	620046133	Icemaker Adapter Lid	1
2	620517030	Manual Fill Door	1
3	620051215	Icemaker Mounting Bracket	2
5	50904	RTV Sealant 3 oz. Tube	1
6	620701601	# 8 x 1/2" Sheetmetal Screw	4
7	620204720INS	Installation Instructions	1
8	630500109	Bin Stat	1



WARNING:

Disconnect power to the unit before installing the adaptor following all lockout/tag out procedures established by the user. Verify that all the power is off to the unit before performing any work.

Failure to comply could result in serious injury, death or damage to the equipment.



WARNING:

All ice baffle plates and bin stats, if included or recommended in this kit, must be installed as directed in this manual or the equipment manufacturer's instructions.

Failure to comply could result in serious injury, death or damage to the equipment.



WARNING:

All of the attachment screws and plates must be installed as directed in this manual.

Failure to comply could result in serious injury, death or damage to the equipment.



WARNING:

The dispenser must be secured with 3/8-16 bolts (6) to the counter before installing this Icemaker Adapter Kit. Refer to the installation manual and Figure 2 for the counter mounting template.

1. Remove the plastic ice storage hopper covers (2) that were shipped with the unit.
2. Remove the (2) screws from each side of the dispenser cabinet. Position the ice maker adapter lid on the dispenser and use the (4) cabinet screws to secure the lid to the cabinet.
3. Refer to Figure 1 to locate the icemaker on the adapter lid. The ice maker should be positioned 2" out from the rear and 1-1/8" in from the right side of the adapter lid. Seal the ice maker base to the adapter lid by running a bead of RTV around the perimeter of the base on the lid. Set the ice maker onto the RTV. Wipe away any excess RTV.
4. Using the icemaker mounting brackets (item 3) as templates, drill 0.147 diameter holes (drill size #26) into the icemaker cabinet and adapter lid. **Use caution so as not to drill into any icemaker component (condenser, tubing, etc.).** Secure the mounting brackets to the icemaker and adapter lid with the # 10 sheet metal screws (item 6) provided in the kit.
5. Install the wire form bracket, supplied with the bin stat kit (item 4), through the 5/8" diameter hole in the bottom of the ice maker. Wrap the eye of the wireform over the stud near the hole to the end of the wireform bracket and wrap the tube around the end of the bracket several times, insuring the tube is secure.

NOTE: The bin stat must not interfere with the agitator rotation or in the path of ice falling from the ice-maker. If it interferes with the agitator or in the path of ice, bend the bracket out of the way.

6. Check that the automatic agitation timer located in the dispenser's electrical control box is set for automatic fill cube ice. The control box is located behind the merchandiser. Remove the merchandiser by lifting up on the sides to disengage the mounting "hooks" from the cabinet slots and rotating forward. Refer to the label in the control box for setting agitation times.
7. Install the manual fill door (item 2) on the adapter lid (item 1). With the door in the open position, insert the hinge pins into the pivot brackets on the door frame. Check for proper opening and closing of the door.
8. The unit is now ready for operation.

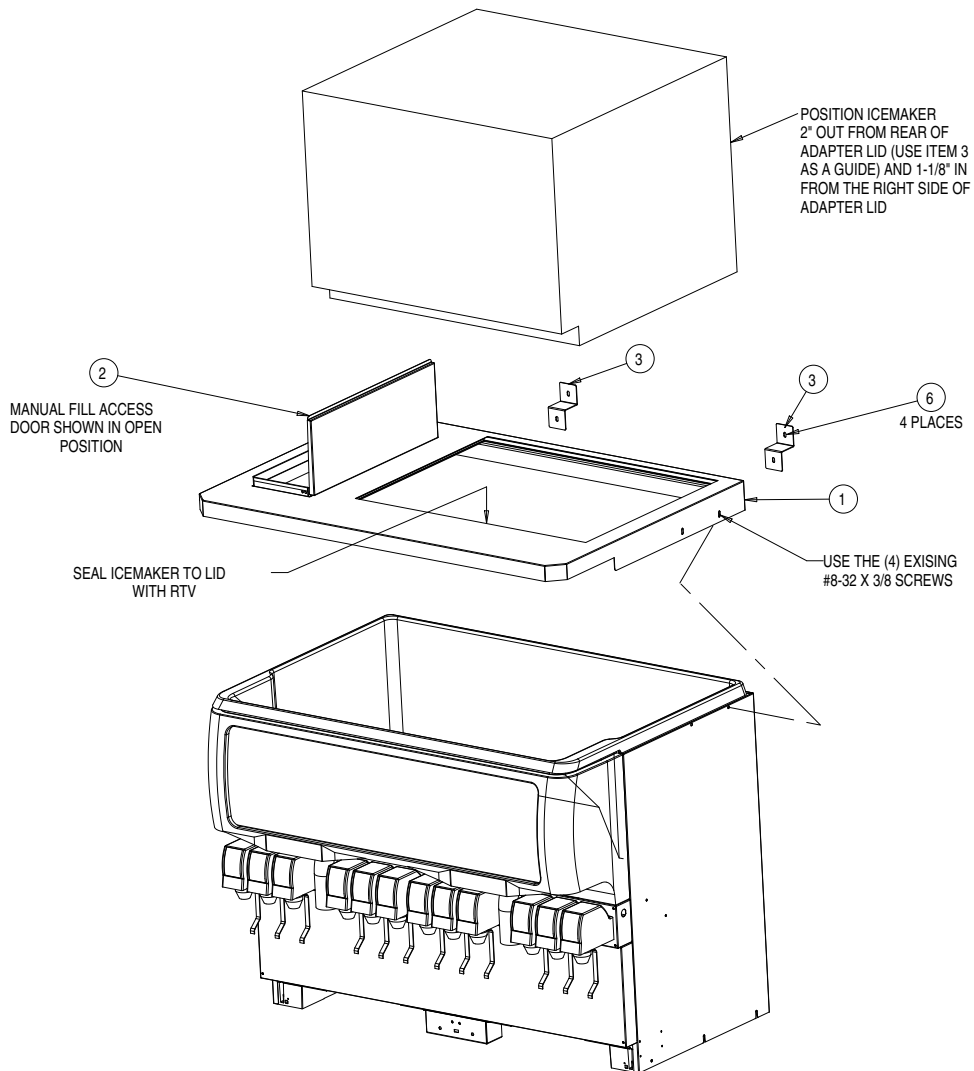
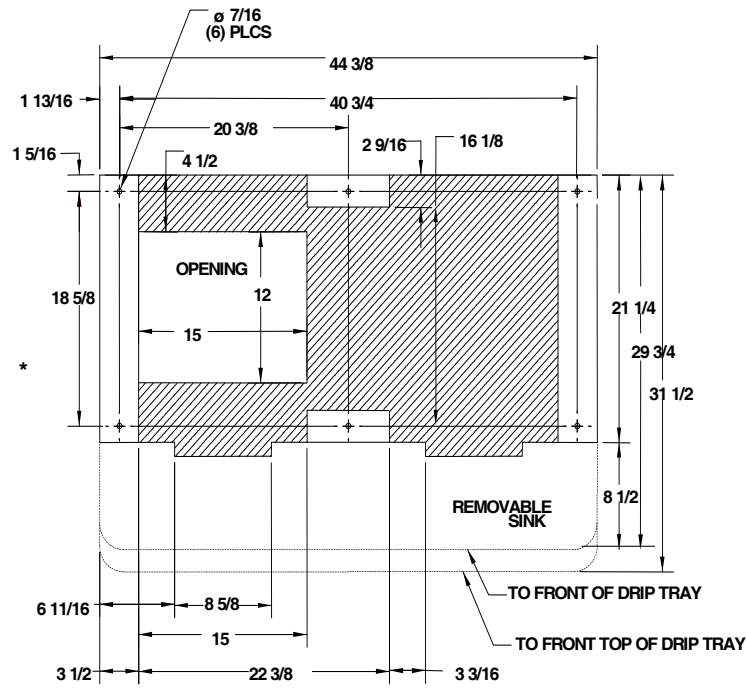


Figure 1. ED/DF300 Kit



RECOMMENDED COUNTER OPENING SIZE 12" X 15" FOR UTILITIES AND BEVERAGE TUBING.
Figure 2. ED/DF300 Kit Mounting Template

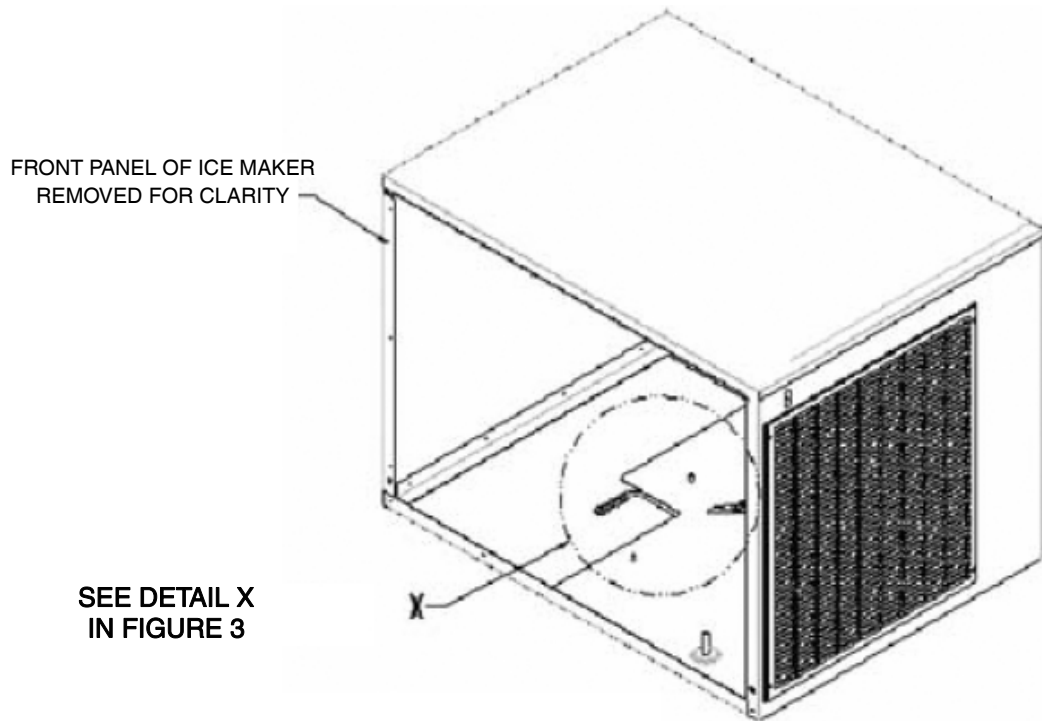


Figure 3. Bin Stat

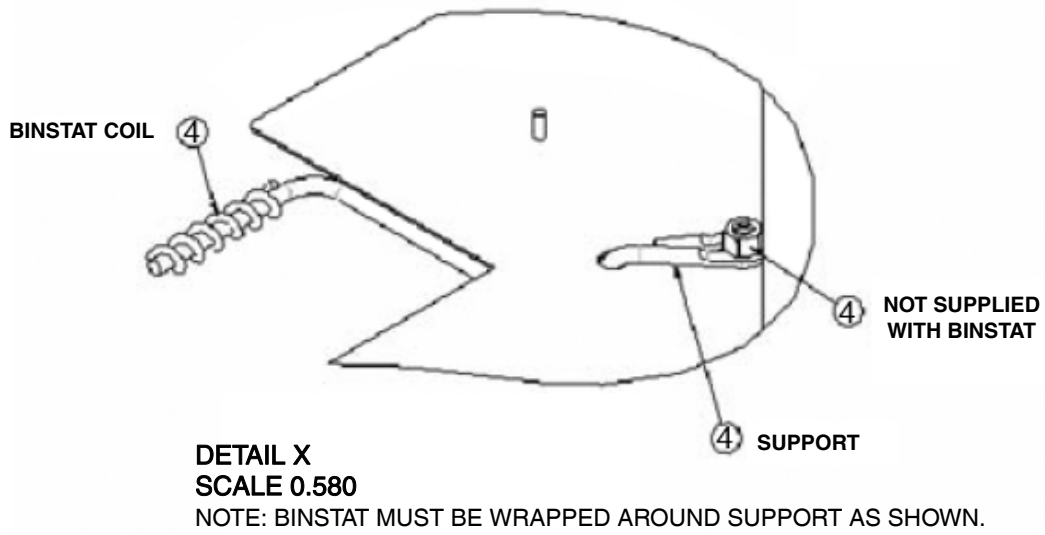


Figure 4. Detail X