

# INSTALLATION INSTRUCTIONS

## ED/DF300 22" CCM322/522 NORDIC BLACK/GRAY STYLE LID KITS

### SAFETY

 **WARNING:**

Before starting installation, read and understand all safety label and warnings on the machine. Also review and understand all safety instructions in the owners, installation and service manuals.

**Failure to comply could result in serious injury, death or damage to the equipment.**

### QUALIFIED SERVICE PERSONNEL

 **WARNING:**

Only trained and certified electrical, plumbing and refrigeration technicians should service this unit.

**All wiring and plumbing must conform to national and local codes. Failure to comply could result in serious injury, death or equipment damage.**

### SAFETY PRECAUTIONS

This unit has been specifically designed to provide protection against personal injury. To ensure continued protection observe the following:

 **WARNING:**

Disconnect power to the unit before servicing. Follow all lock out/tag out procedures established by the user. Verify all power is off to the unit before performing any work.

**Failure to comply could result in serious injury, death or damage to the equipment.**

 **CAUTION:**

Always be sure to keep area around the unit clean and free of clutter.

**Failure to keep this area clean may result in injury or equipment damage.**

This Nordic style kit applies to the Cornelius 22" wide CCM322/522 ice maker.

**Table 1. Loose-Shipped Parts**

| Item No. | Part No.     | Name                                      | Qty. |
|----------|--------------|---|------|
| 1        | 15210        | Lid Assembly                              | 1    |
| 2        | 22127        | Icemaker Mounting Bracket                 | 2    |
| 3        | 50904        | RTV. 3Oz Tube                             | 1    |
| 4        | 52946        | Manual Ice Fill Cover, Black              | 1    |
|          | 52964        | Manual Ice Fill Cover, Gray               | 1    |
| 5        | 91957        | Label, "Disconnect Power Before Cleaning" | 1    |
| 6        | 620042919    | ED300 Ice Baffle                          | 1    |
| 7        | 620701601    | #10 x 1/2" LG. Sheet metal Screw          | 8    |
| 8        | 620701902    | #8-32 Nylon Acorn Nut                     | 4    |
| 9        | 620701901    | Sealing Washer                            | 4    |
| 10       | 621701903    | #8 Nylon Washer                           | 4    |
| 11       | 620204725INS | Installation Instructions                 | 1    |
| 13       | 630500109    | Bin Stat                                  | 1    |

**⚠ WARNING:**

All ice baffle plates and bin stats, if included or recommended in this kit, must be installed as directed in this manual or the equipment manufacturer's instructions. **Failure to comply could result in serious injury, death or damage to the equipment.**

**⚠ WARNING:**

All of the attachment screws and plates must be installed as directed in this manual. **Failure to comply could result in serious injury, death or damage to the equipment.**

**⚠ WARNING:**

The dispenser must be secured with 3/8-16 bolts (6) to the counter before installing this Icemaker Adapter Kit. Refer to the installation manual and Figure 3 for the counter mounting template.

**NOTE: Adjust the automatic agitation timer located in the dispenser's electrical control box to 5 seconds on, 20 minutes off. Access to the timer is provided by removing the merchandiser/upper front panel.**

1. Remove the (2) screws from each side of the dispenser cabinet. and the plastic hopper covers (2) that were shipped with the unit.
2. Place the "K" style lid on the unit and use the (4) screws that were removed to fasten the lid in place.
3. Install the ice baffle on the lid assembly as shown in Figure 2.

**IMPORTANT: The baffle prevents ice from overflowing the manual fill area during agitation/ dispensing with a full storage bin and forcing the manual fill cover off.**

4. Seal the icemaker to the top of the dispenser after determining the correct location for the ice maker (see Figure 1).
  - A. Run beads of RTV around the opening in the lid and inside of the perimeter of the ice maker outline so that the ice maker will set on the RTV.

- B. Set the ice maker onto the lid and position it as required.
- C. Wipe away the excess RTV.
- 5. Drill 0.147" diameter holes into the ice maker cabinet and the dispenser lid using the icemaker mounting brackets as templates.


**CAUTION:**

NOT TO DRILL INTO ANY ICEMAKER COMPONENTS (CONDENSER, TUBING, ETC.). Secure the brackets using the #10 sheet metal screws provided.

- 6. Install the wire form bracket, supplied with the bin stat kit (item 4), through the 5/8" diameter hole in the bottom of the ice maker. Wrap the eye of the wire form over the stud near the hole to the end of the wire form bracket and wrap the tube around the end of the bracket several times, insuring the tube is secure.

**NOTE: The bin stat must not interfere with the agitator rotation or in the path of ice falling from the icemaker. If it interferes with the agitator or in the path of ice, bend the bracket out of the way.**

**IMPORTANT: Do not use the spacers provided for mounting the bin thermostat capillary tube to the Icemaker base.**

- 7. Locate the cleaning caution label (item 5) on the manual ice fill cover (item 4) as shown in Figure 1. Place the manual fill cover in position over the flange on the lid assembly and the front access hopper opening.
- 8. The unit is now ready for operation.

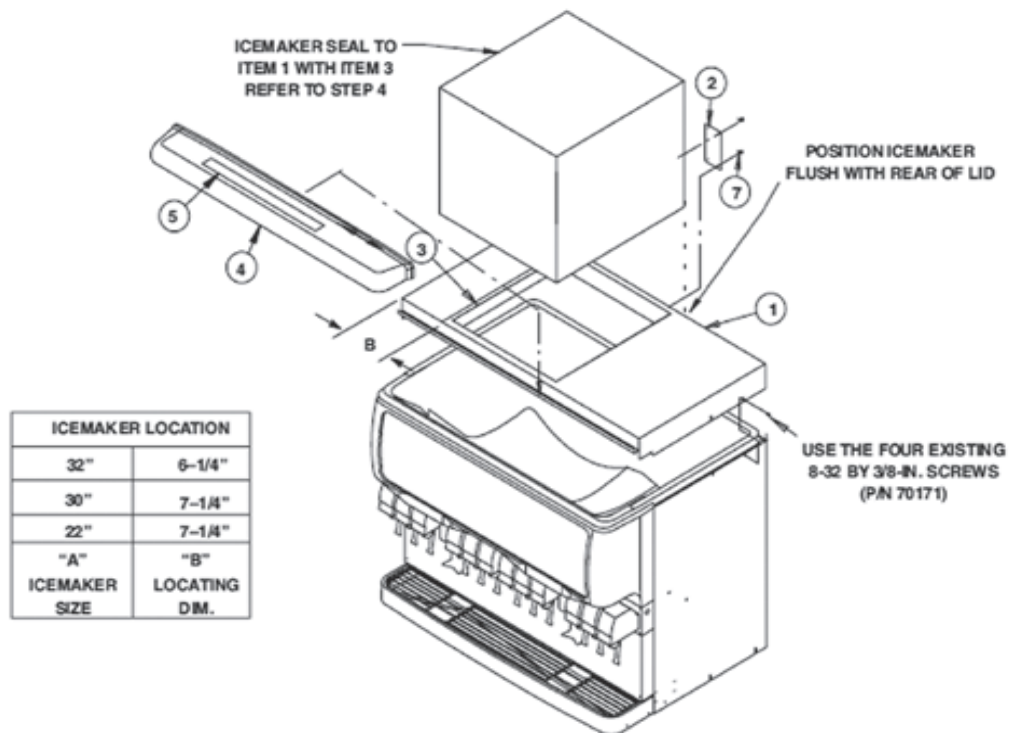


Figure 1.

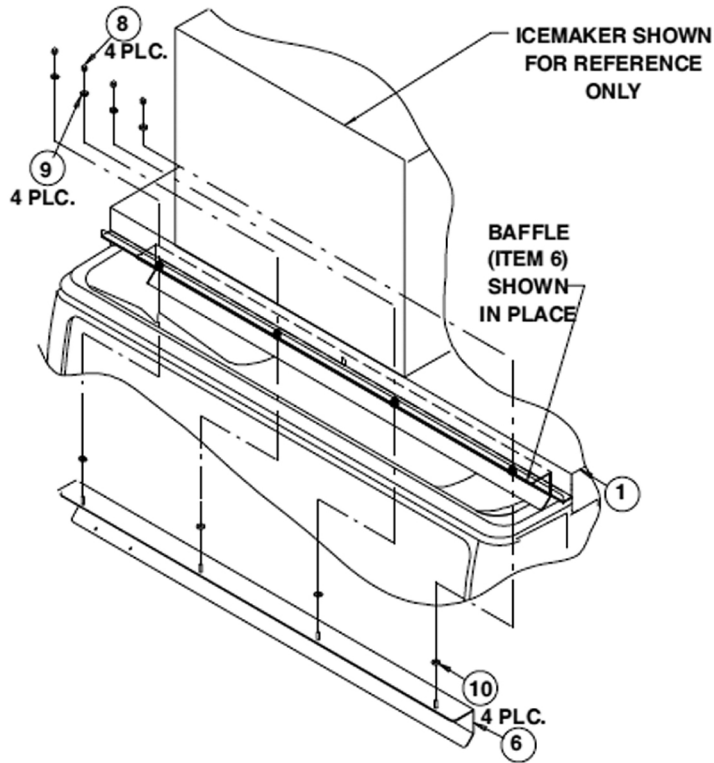
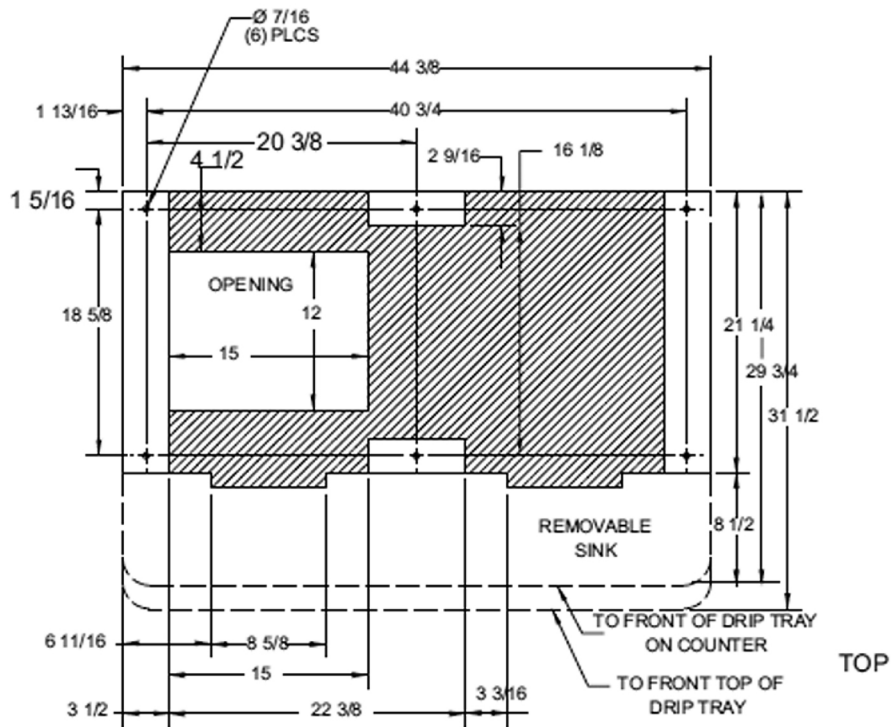


Figure 2.



RECOMMENDED COUNTER OPENING SIZE 12" X 15"  
FOR UTILITIES AND BEVERAGE TUBING.

Figure 3.

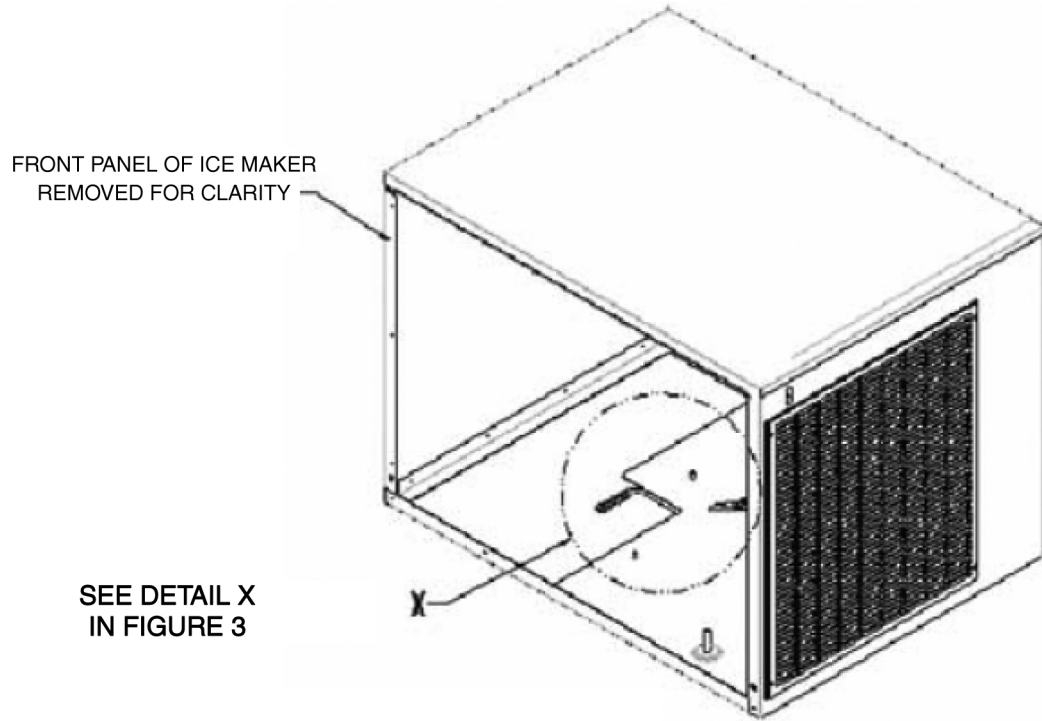
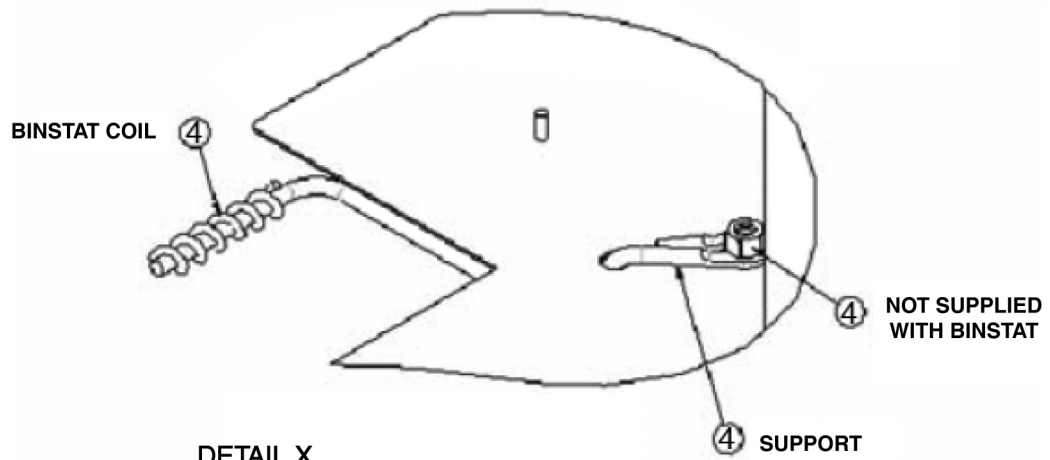


Figure 4.



NOTE: BINSTAT MUST BE WRAPPED AROUND SUPPORT AS SHOWN.

Figure 5.