

# INSTALLATION INSTRUCTIONS

## ICE MAKER ADAPTER KIT (P/N 629087901)

The following dispenser and ice maker units:

**Table 1: Applicable Models**

Dispenser Models	Ice Maker Models	Size (Width)
ED200/250	Cornelius "I" Series 330/530/630/830/1030/1230	30-in.
ED200/250	Wilshire WCC 500/700	14-1/2 in.

**Table 2: Loose-Shipped Parts**

Item No.	Part No.	Name	Qty.
1	620027305	Cover Assembly	1
2	52969	Lid, Icemaker	1
3	620046002	Cover, Icemaker kit	1
4	620045703	Base Panel, Icemaker (14-1/2 Inches)	1
5	620027306	Bracket, Icemaker stop (30-Inches)	2
6	22127	Bracket, Mounting (14-1/2 inches)	1
7	620700601	Screw, No. 10	14
8	169071002	Gasket, PVC (23-Inches Long)	1
9	50904	Sealant, RTV, 3-oz. Tube	2
10	91957	Label, "Disconnet Power Before Cleaning"	2
11	620919501	Installation Instructions	1
12	630000408	Bin Therostat Kit	1
13	620037003	Ice Baffle	1
14	621701903	Nylon Washer	2
15	620701901	Sealing Washer	2
16	620701902	Nylon Acorn Nut, 8-32	2



**WARNING:**

Disconnect power to the unit before servicing. Follow all lock out/tag out procedures established by the user. Verify all power is off to the unit before performing any work.

**Failure to comply could result in serious injury, death or damage to the equipment.**



**WARNING:**

All ice baffle plates and bin stats, if included or recommended in this kit, must be installed as directed in this manual or the equipment manufacturer's instructions.

**Failure to comply could result in serious injury, death or damage to the equipment.**



**WARNING:**

All of the attachment screws and plates must be installed as directed in this manual.

**Failure to comply could result in serious injury, death or damage to the equipment.**

Perform the following procedure to install the adapter kit.

1. Position the ADAPTER LID ASS'Y (item 1) on the Dispenser flush with rear of the Dispenser cabinet as shown in Figure 1.
2. Using the slotted holes in the Adapter Lid Assembly as a template, drill four (4) .147 diameter holes at bottom of the slots into the Dispenser cabinet using a No. 26 drill bit (see detail A in Figure 1). Secure Adapter Lid Assembly to Dispenser Cabinet with four NO. 10 SCREWS (item 7).
3. Install ice baffle (item 13) onto Adapter lid (item 1). See Figure 3.
4. Seal the Ice Maker to the top of the Dispenser (see Figure 1) as follows:

### CORNELIUS "I" SERIES 30-INCH ICE MAKERS (SEE FIGURE 1).

1. Run a bead of RTV (item 9) around the opening in the lid and inside of the perimeter of the Ice Maker outline so Ice Maker will set on the RTV.
2. Set the Ice Maker onto the lid. **Note if installing the Ice Maker from the front of the Dispenser, use a 3/4-inch diameter or larger PVC pipe as a "roller" to slide the Ice Maker over the front lip of the Dispenser.**
3. Install the Ice Maker MOUNTING BRACKETS (item 5) as shown in Figure 1 by first removing the two rear screws from the Dispenser lid. Use base screws to install the brackets on the lid. Next, using the bracket as a template, drill .147 diameter holes into the Ice Maker Cabinet. **Use extreme caution not to drill into any of the Ice Maker's components (condenser, tubing, etc).** Secure the brackets to the Ice Maker cabinet with No. 10 SCREWS (item 7).
4. Follow the Ice Maker manufactures instructions to complete the installation of the Ice Maker including the BIN THERMOSTAT KIT (item 12). See Figure 2.

### WILSHIRE WCC 500/700 14-1/2- INCH ICE MAKER (SEE FIGURE 3).

1. Install BASE (item 4) plate as shown, 1/8 off right side and rear. Apply RTV to underside of cover between cover and adapter lid. Fasten with No. 10 SCREWS (item 7), this is to be under the Ice Maker.
2. Run a bead of RTV inside the perimeter of the Ice Maker base outline on the base plate so that the Ice Maker will set on the RTV.
3. Set the Ice Maker onto the base, wipe away any excess RTV.
4. Secure MOUNTING BRACKETS (item 6) using mounting bracket as a template. Drill .147 diameter holes into the cabinet . Use extreme care not to drill into any Ice Maker components (condenser, Tubing etc.)
5. Install COVER LID (item 3) as shown and secure with No. 10 SCREWS (item 7). Also install GASKET STRIP (item 8) to flange of cover. **Note this GASKET STRIP (item 8) must be against the Ice Maker and compressed to form a seal with lid secured in position.**
6. Install LABEL, DISCONNECT POWER (ITEM 10) on the covers as shown in Figures 1 and 2.
7. The Ice Maker/Dispenser is ready to operate.

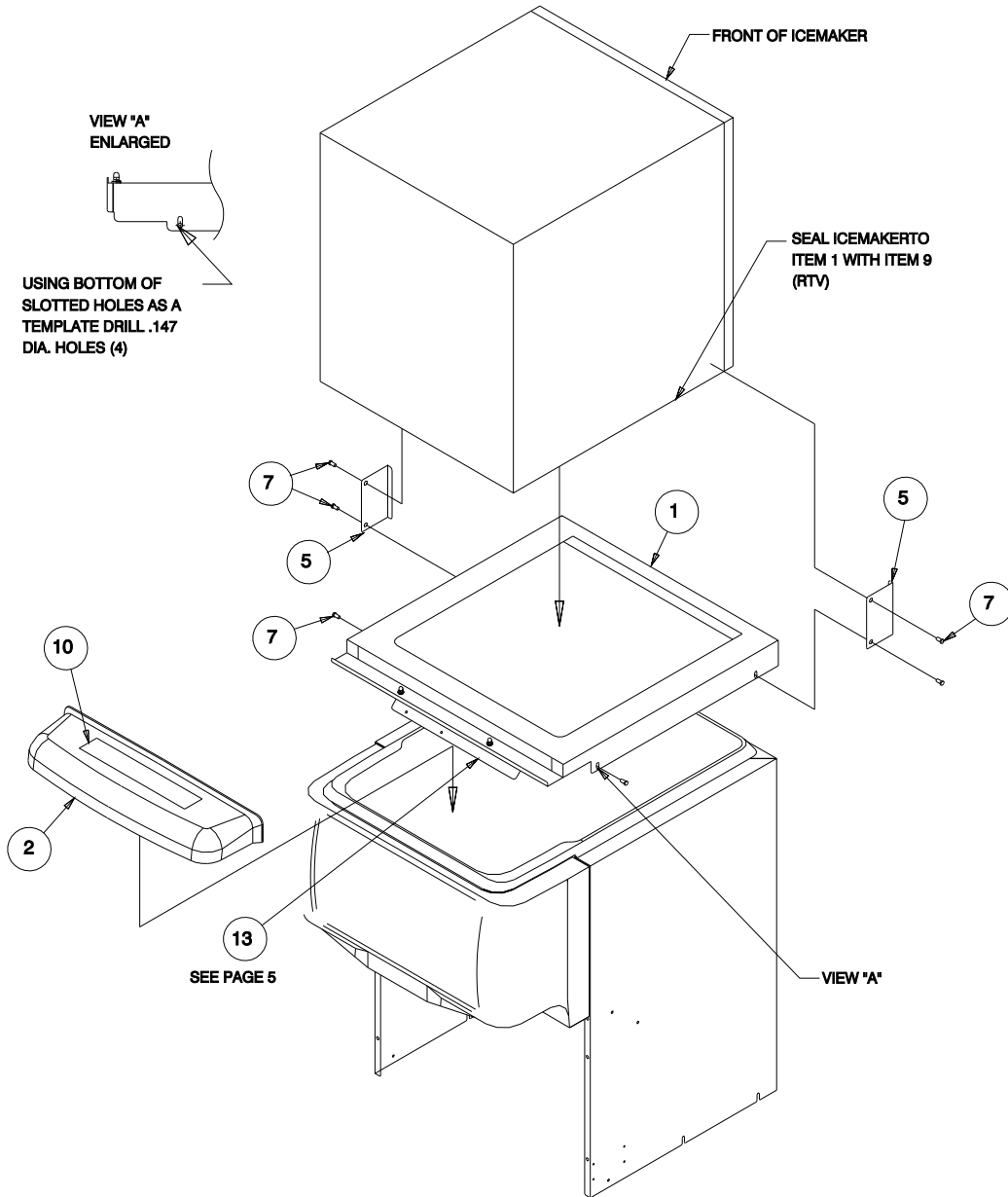


Figure 1. Cornelius "I" Series 30-Inch Dispenser Assembly

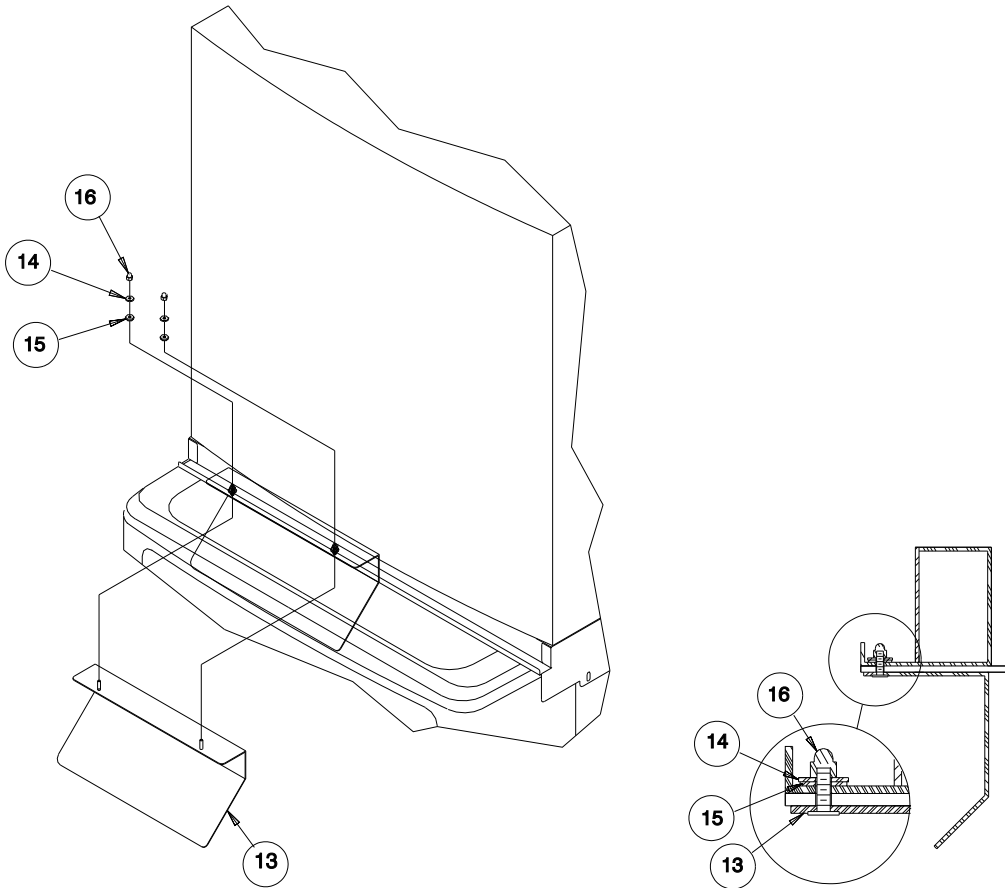


Figure 2. Detail "A"

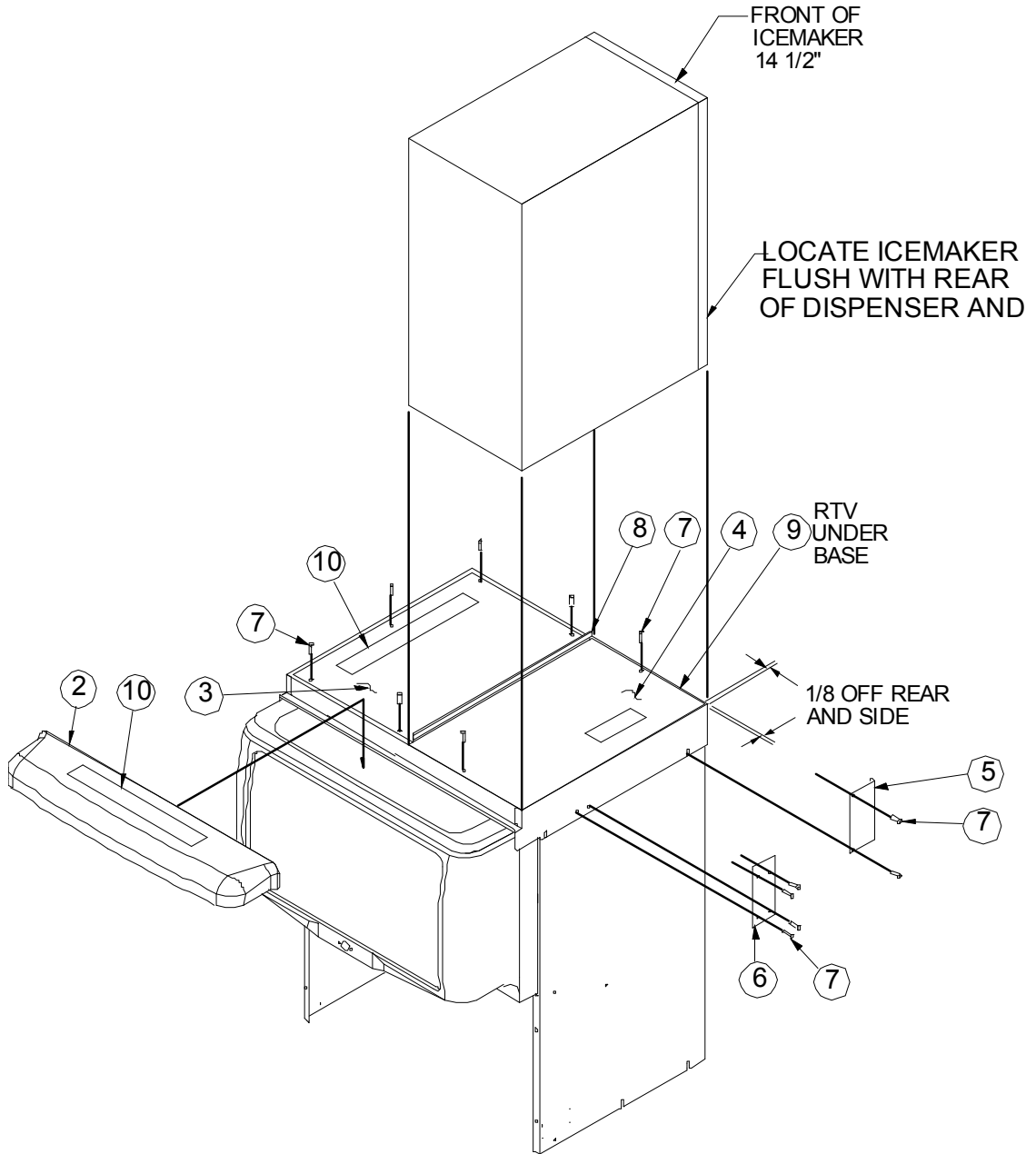


Figure 3. Wilshire WCC500/700 14-1/2 Inch Dispenser Assembly