



INSTALLATION INSTRUCTIONS

ICE MAKER ADAPTER KIT (P/N 629084901)

For Dispensers and the following ice maker model series:

Table 1. Applicable Models

Models
Remcor Model Series DF/ED200/250
Hoshizaki KML 200, 400, 600

Table 2. Loose Shipped Parts

Item No.	Part No.	Name	Qty.
1	620032901	Ice Maker Adapter Lid	1
2	620032904	Manual Ice Fill Cover	1
3	15303	Ice Maker Mounting Bracket	2
4	50904	RTV, 3-oz. Tube	1
5	70226	No. 10 Sheet Metal Screw	6
6	70188	No. 8-32 Thumb Screw	1
7	91957	Label, "DISCONNECT POWER BEFORE CLEANING"	1
8	620913601	Installation Instructions	1



WARNING:

Disconnect power to the unit before installing the adaptor following all lockout/tag out procedures established by the user. Verify that all the power is off to the unit before performing any work.

Failure to comply could result in serious injury, death or damage to the equipment.



WARNING:

All ice baffle plates and bin stats, if included or recommended in this kit, must be installed as directed in this manual or the equipment manufacturer's instructions.

Failure to comply could result in serious injury, death or damage to the equipment.



WARNING:

All of the attachment screws and plates must be installed as directed in this manual.

Failure to comply could result in serious injury, death or damage to the equipment.

1. Remove the plastic dispenser lid and discard it.
2. Install the ice maker adapter lid as shown in Figure 1. Using the slotted holes in the lid as a template, drill four (4) 0.136" diameter holes at the bottom of the slots (refer to Detail A in Figure 2) into the dispenser cabinet. Secure the lid to the cabinet with four (4) No. 10 sheet metal screws provided in the kit.
3. Seal the ice maker to the dispenser adapter lid as follows (refer to Figure 1).
 - A. Run a bead of RTV on the lid around the outline of the ice maker.
 - B. Set the Ice maker on to the lid and position as shown. **Note: If the ice maker is being installed from the front of the dispenser, use a piece of 3/4-inch diameter or larger PVC pipe as a "roller" to slide the ice maker over the front "drip" flange of the dispenser lid.**
 - C. Wipe away any excess RTV.
4. Secure the ice maker to the dispenser with two (2) brackets provided in the kit. Mount the brackets to the dispenser lid using the two rear screws, as shown in Figure 1. Using the brackets as templates, drill 0.136" diameter



holes into the Ice maker cabinet. **Use caution not to drill into any Ice maker components (condenser, tubing etc.).** Secure the brackets to the ice maker cabinet using the No. 10 sheet metal screws provided in the kit.

5. Follow the manufacturer's instructions to complete the installation of the ice maker, including the bin thermostat, if so equipped or required.



CAUTION:

The bin thermostat location must not interfere with the agitator rotation.

6. Install the caution label on the manual fill cover as shown in Figure 1. Secure the cover in position over the front bin access opening by placing it over the drip flange lid on the lid (refer to Detail B of Figure 3). Note that with the cover installed properly, it is held in position by the lid drip flange and cannot be removed without first lifting it over the drip flange. Secure the manual fill cover to the adapter lid with the No. 8-32 thumb screws provided in the kit.

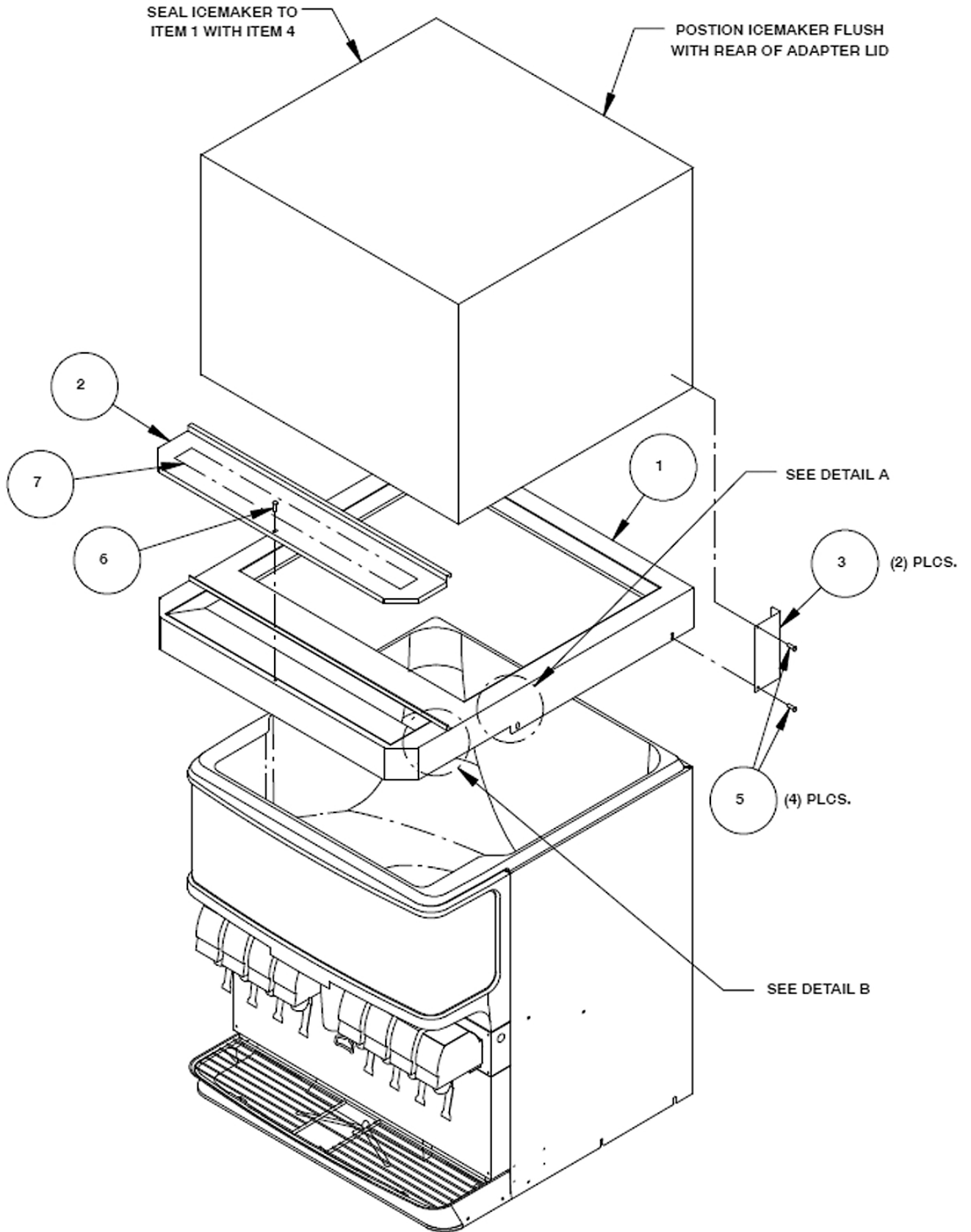


Figure 1. Ice Maker Installation

DETAIL A

(ENLARGED)

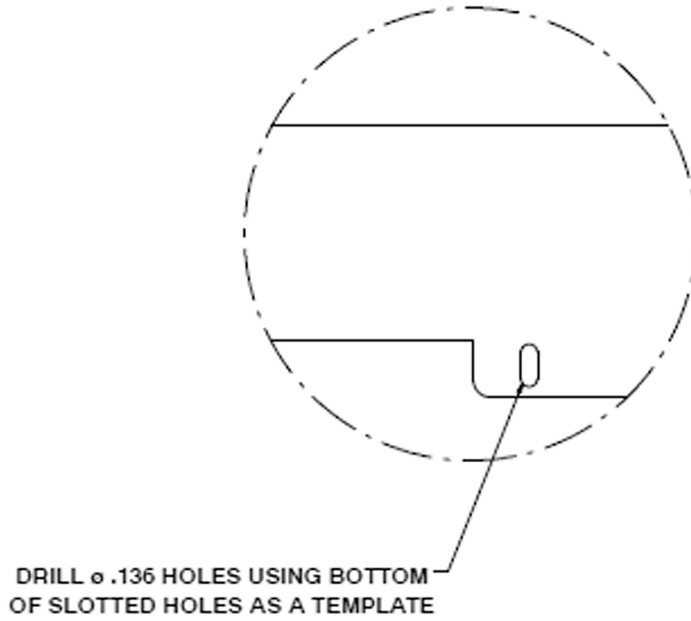


Figure 2. Enlarged view of Detail A

DETAIL B

(ENLARGED)

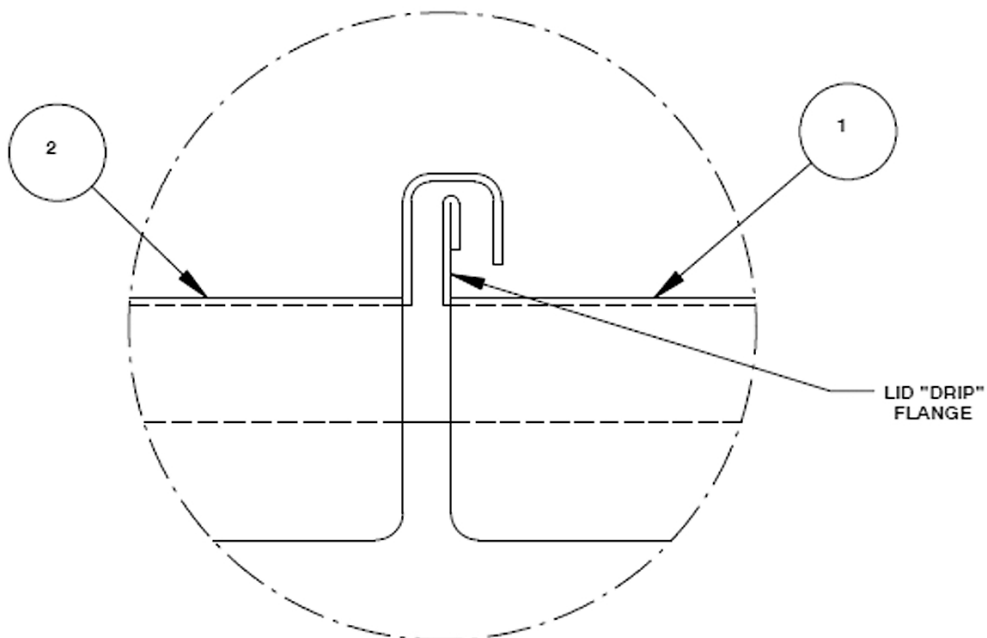


Figure 3. Enlarged view of Detail B