

INSTALLATION INSTRUCTIONS

DF/EDXXX ADAPTER LID KITS

This adapter kit is for the following icemakers:

Table 1. Applicable Models

Ice Maker	Size
Manitowoc IB600C/800C/1000C Models	22"
Scotsman CME686/810 Eclipse Models	22"
Hoshizaki FS-1001 MLH-C	30"

Table 2.

Parts List

Dispenser Kit Part No. Components	DF/ED150	DF/ED175	DF/ED2XX	DF/ED300	DF/ED300	Qty
	629087959	629087571	629087572	629087463	629097090	
1. Adapter Lid	620046113	620515520	620046049	620046047	620055269	1
2. Manual Fill Cover	620516634	620516635	620516636	620516637	620516637	1
3. Ice Baffle	620042917	620042918	620042913	620042908	620042908	1
4. Screw #8 SM	70217	70217	70217	70217	70217	4
5. Screw #8-32 WG	70170	70170	70170	70170	70170	2
6. Label, Warning	91957	91957	91957	91957	91957	1
7. Gasket	620710110	620710110	620710110	620710110	620710110	8 ft.
9. Shoulder Screw	620706635	620706635	620706635	620706635	620706635	2
10. #10 Flatwasher	70056	70056	70056	70056	70056	2
11. #10-32 Nyloc Nut	70017	70017	70017	70017	70017	2
12. Label Bullet Latch	620920655	620920655	620920655	620920655	620920655	1
13. Instructions	620919543INS	620919543INS	620919543INS	620919543INS	620919543 INS	1



WARNING:

Disconnect power to the unit before servicing. Follow all lock out/tag out procedures established by the user. Verify all power is off to the unit before performing any work.

Failure to comply could result in serious injury, death or damage to the equipment.



WARNING:

All ice baffle plates and bin stats, if included or recommended in this kit, must be installed as directed in this manual or the equipment manufacturer's instructions.

Failure to comply could result in serious injury, death or damage to the equipment.



WARNING:

All of the attachment screws and plates must be installed as directed in this manual.

Failure to comply could result in serious injury, death or damage to the equipment.

1. Unpack kit. Refer to Figure 1 for component detail.
2. Remove the front (2) screws securing the cabinet to the hopper. Set the lid assembly onto the dispenser. Using the slotted holes on the side of the lid as a template, drill (4) 0.141" diameter holes at the bottom of the slots (Figure 1, detail W).

NOTE: Use extreme care not to drill into the hopper. Use a drill stop to ensure that the drill bit does not penetrate deeper than 1/4 in. past the sheetmetal. Failure to do so could result in a hole in the ice storage hopper.



3. Fasten the lid to the dispenser with (4) #8 sheetmetal screws (item 4), two on each side, and the existing (2) front screws removed in step 2. Refer to Figure 1, details U and V.
4. Insert the ice baffle (item 3) into the lid assembly (item 1), Figure 2A & 2B. The tabs of the ice baffle should slide into the slots on the lid assembly.
5. Seal the icemaker to the adapter lid as follows:
 - A. Refer to Figure 1A and install the adhesive-backed gasket (item 7) in position on the lid.
 - B. Remove the front panel of the icemaker and set the icemaker onto the lid. Position the icemaker so that the mounting holes on the front of the icemaker base line up with the threaded nutserts on the adapter lid.

IMPORTANT: Do not slide the icemaker into position on the lid. Lift and set the icemaker onto the gasket to avoid damaging the gasket seal.

- C. Secure the icemaker base to the lid with thumbscrews (item 5 - see Figure 3).
 - D. Trim the excess gasket at the rear of the icemaker base for Manitowoc models.
6. Follow the icemaker manufacturer's instructions to complete the installation of the icemaker.
7. Secure the manual fill cover (item 2) to the adapter lid (item 1) with the (2) shoulder screws (item 8), washers (item 9), and locknuts (item 10) as shown in Figure 1. Check for proper operation of the manual fill cover by opening and closing the cover. The cover latch should engage in the full open position and hold the cover open. Pull the red knob on the latch to release the cover.
8. Apply the labels (items 6 & 11) to the front of the manual fill cover.

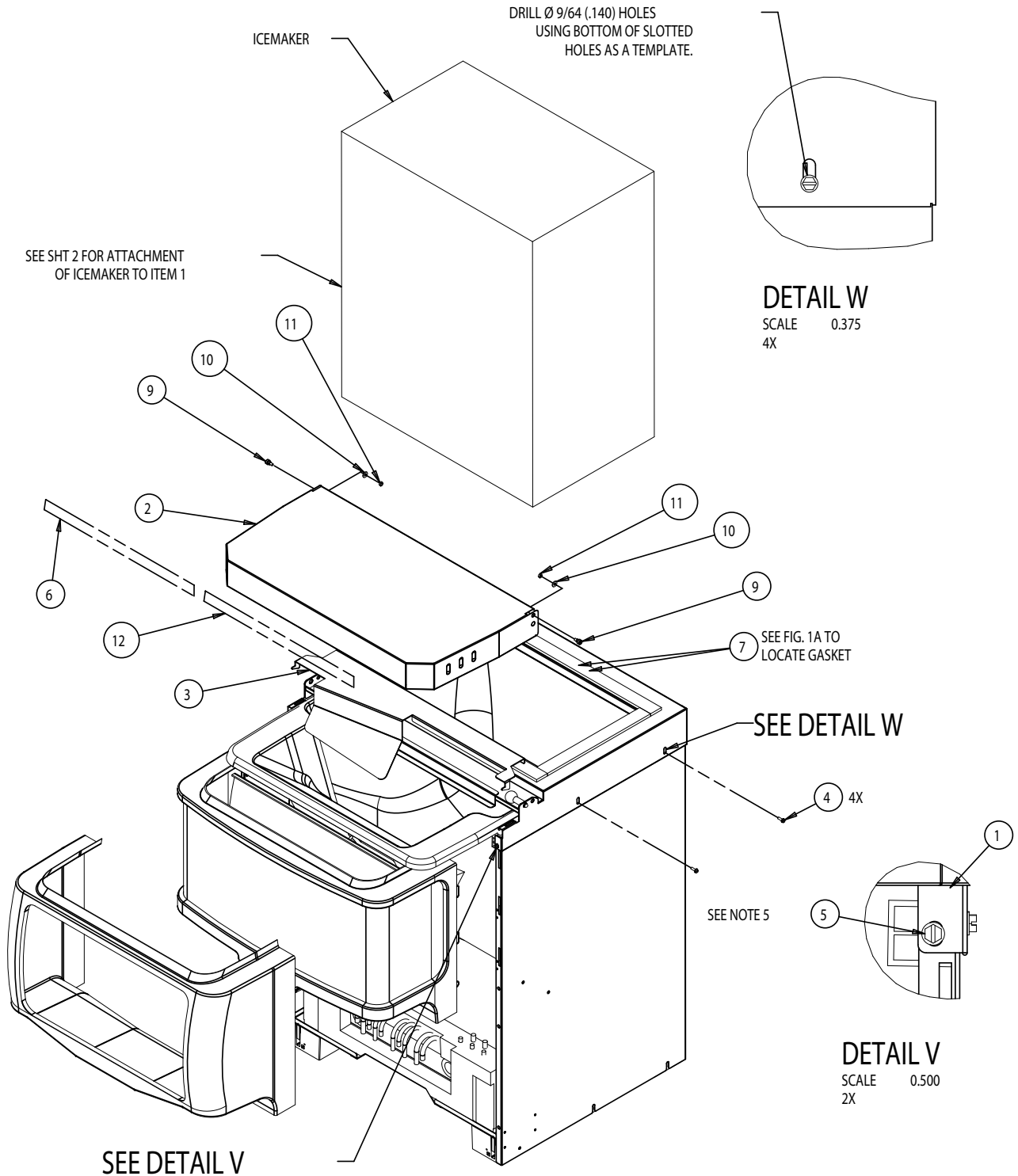
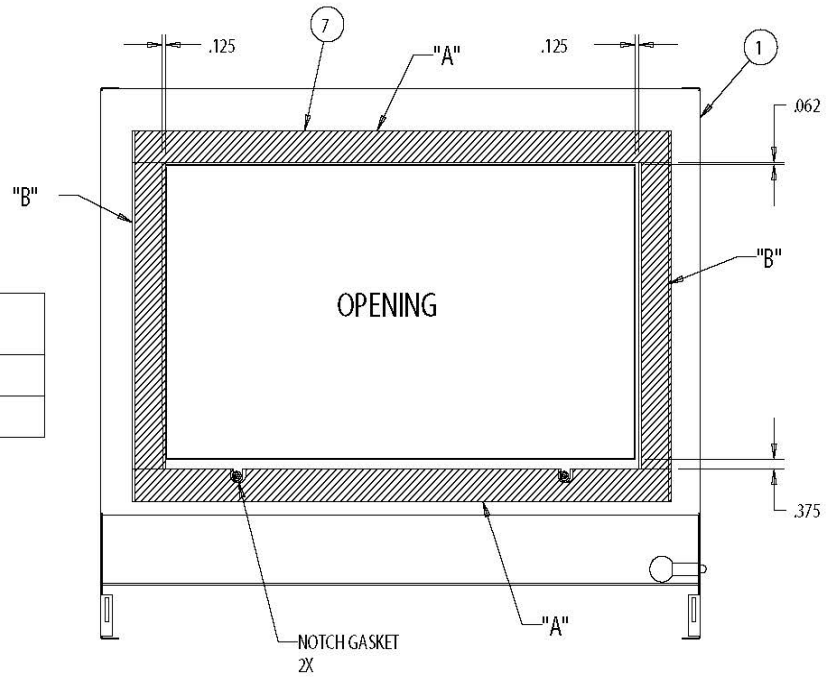


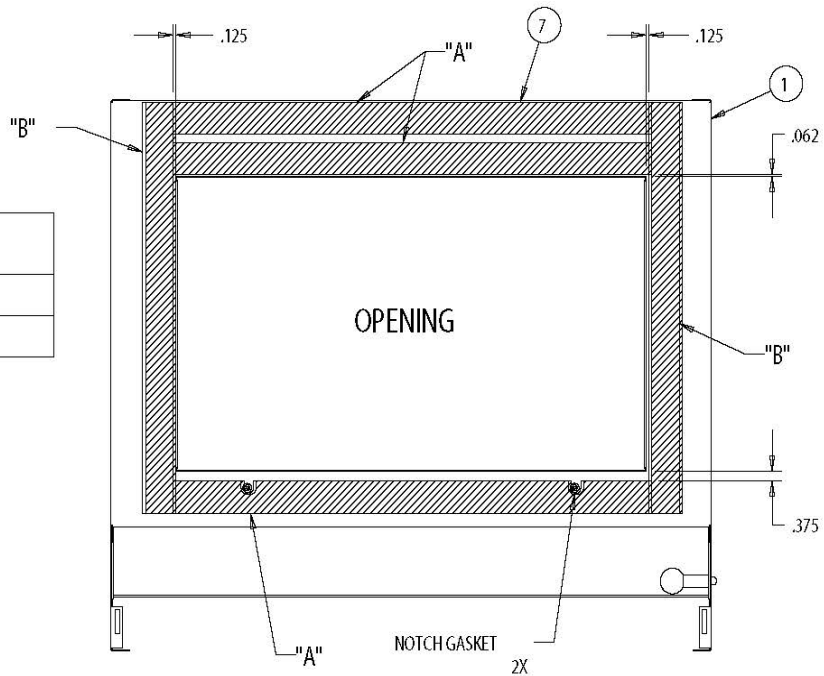
Figure 1.

GASKET LENGTH	
A	23
B	12.037



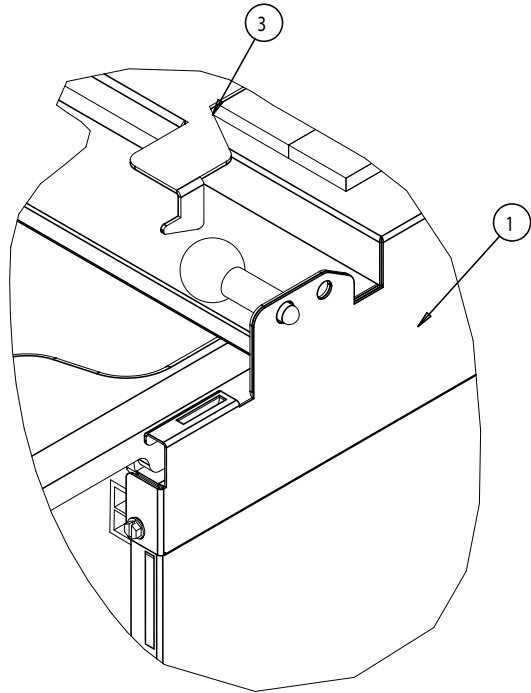
FOR MANITOWOC MODELS

GASKET LENGTH	
A	20.5
B	15.787



FOR SCOTSMAN MODELS

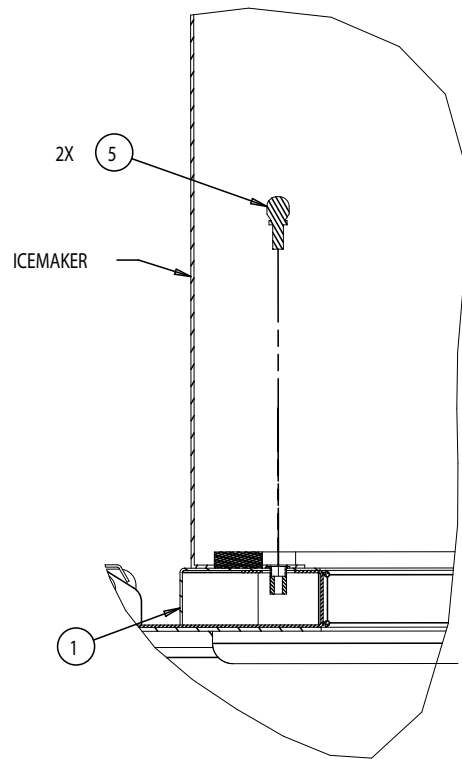
Figure 1A. Gasket Installation



**BAFFLE INSTALLATION
STEP 1**

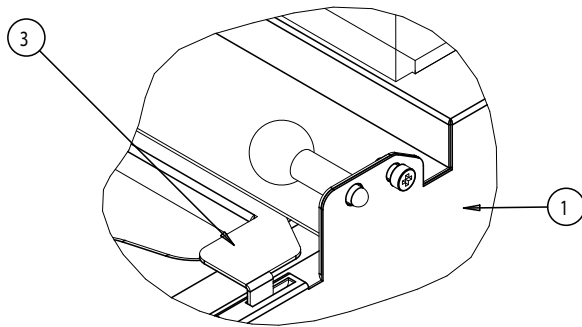
SCALE 0.375

FIG. 2a



SECTION X-X

FIG. 3



**BAFFLE INSTALLATION
STEP 2**

SCALE 0.375

FIG. 2b