

INSTALLATION INSTRUCTIONS

Cart Assembly 2FL with Pumps and Regulators

SAFETY INSTRUCTIONS

QUALIFIED SERVICE PERSONNEL

WARNING:

Before starting installation, read and understand all safety label and warnings on the machine. Also review and understand all safety instructions in the owners, installation and service manuals.

FAILURE TO COMPLY COULD RESULT IN SERIOUS INJURY, DEATH OR DAMAGE TO THE EQUIPMENT.

WARNING:

Only trained and certified electrical, plumbing and refrigeration technicians should service this unit.

All wiring and plumbing must conform to national and local codes.

FAILURE TO COMPLY COULD RESULT IN SERIOUS INJURY, DEATH OR EQUIPMENT DAMAGE.

WARNING:

Disconnect power to the unit before servicing. Follow all lock out/tag out procedures established by the user. Verify all power is off to the unit before performing any work.

FAILURE TO COMPLY COULD RESULT IN SERIOUS INJURY, DEATH OR DAMAGE TO THE EQUIPMENT.

SAFETY PRECAUTIONS

This unit has been specifically designed to provide protection against personal injury. To ensure continued protection observe the following:

CAUTION:

Always be sure to keep area around the unit clean and free of clutter.

FAILURE TO KEEP THIS AREA CLEAN MAY RESULT IN INJURY OR EQUIPMENT DAMAGE.

Applies to:

621056813 Cart Viper Elite Pre-Plumbed 2FL

Supplied Parts:

P/N 620045325 - Shim, 2.50 OD X 0.625 ID X 0.075 - Quantity 6

Tools Required:

3/4" Open-End Wrench

3/4" Socket and Ratchet set

CART INFORMATION AND MOUNTING

The Viper unit may be mounted on a mobile cart (Cornelius part no. 621056813) which allows some movement of the unit for service and cleaning. There are four captive nuts on the bottom of the Viper to accommodate four 3/8-16 bolts. These bolts must be installed to secure the unit to the cart.

This cart is also designed with movable wheels that act as outriggers to provide stability to the unit when it is being moved.

⚠ WARNING:

The above listed mounting bolts must be installed and the wheels extended and locked in the outboard position prior to moving the unit.

FAILURE TO COMPLY COULD RESULT IN SERIOUS INJURY, DEATH OR EQUIPMENT DAMAGE.

Leveling the Cart:

Follow these steps for Cart Installation and Leveling:

Table 1.


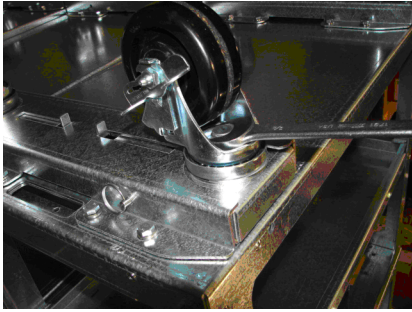
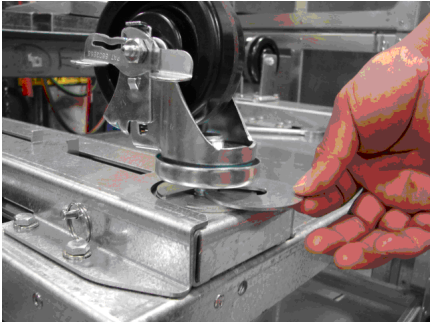
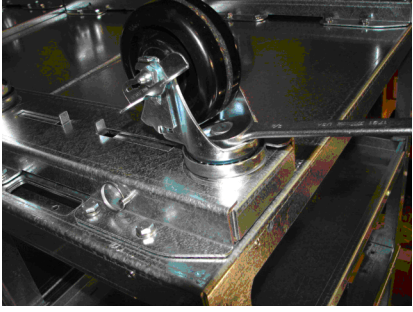
| Steps | Actions |
|-------|--|
| 1. | Remove cardboard packaging materials. |
| 2. | The cart still mounted to the skid (protect the cart from damage during leveling process), position the cart in location and check for level. If the cart is level, please go to Viper Machine Mounting. |
| 3. | <p>Turn the cart upside down (skid on the floor) and locate the hex nut on the swivel casters.</p> <div data-bbox="842 1346 1252 1650" data-label="Image">  </div> <p style="text-align: center;">Figure 1.</p> |

Table 1.

| | | |
|-----------|---|---|
| <p>4.</p> | <p>Using a 3/4" open-end wrench, loosen the nut on the bottom of the swivel caster.</p> |  <p style="text-align: center;">Figure 2.</p> |
| <p>5.</p> | <p>Add or remove shims as required to level the cart. The cart is supplied with three (3) shims under each front swivel caster. Six (6) additional shims are also supplied loose in a plastic bag (Figure 3).</p> <p>⚠ WARNING: Do not install anything except the supplied shims between the casters the support bracket. doing so can create an unsafe load on the caster stud resulting in damage that may cause the cart to tip.</p> |  <p style="text-align: center;">Figure 3.</p> |
| <p>6.</p> | <p>Tighten the nut using the 3/4" open-end wrench.</p> |  <p style="text-align: center;">Figure 4.</p> |
| <p>7.</p> | <p>Stand cart upright (skid up) and inspect to make sure it is level.</p> | |
| <p>8.</p> | <p>If cart is not level, repeat steps 3 through 7 as necessary on the other casters.</p> | |

VIPER MACHINE MOUNTING:

Follow the steps listed below to mount the Viper machine to the cart.

Table 2.

| Steps | Actions |
|-------|---|
| 1. | With the cart in an upright (skid up) position, remove the four (4) hex bolts that secure the skid to the cart. Be sure to save the four (4) hex bolts and washers. They will be used to mount the Viper machine to the cart. |

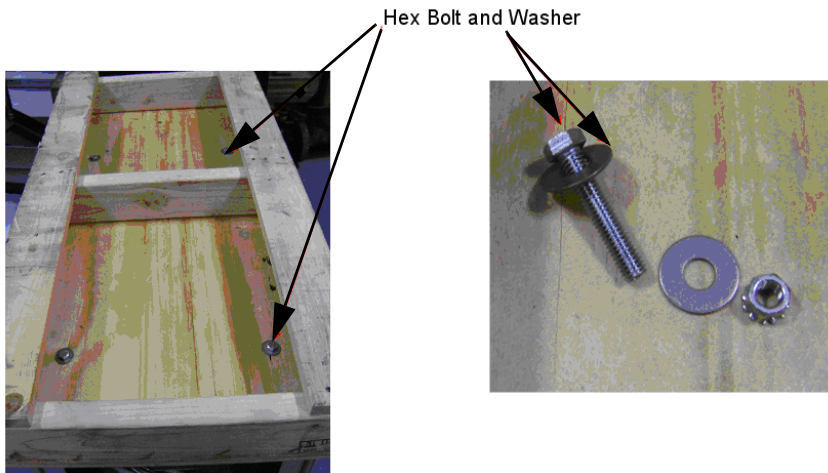


Figure 5.

| | |
|----|--|
| 2. | Remove the skid from the top of the cart. |
| 3. | Wipe away any dirt or other foreign matter from the cart top. |
| 4. | Remove the back panel of the cart. |
| 5. | Unpack the Viper machine. Be sure to follow all the Delivery, Inspection, and Unpacking directions found in the Installation Manual. |
| 6. | Remove the caps on the bottom of the Viper machine. This allows the cart tubing to pass through. |
| 7. | Carefully position the Viper machine over the desired mounting holes. A. Mounting holes "A" – Drip tray rests on cart B. Mounting holes "B" – Drip tray over-hangs cart. |

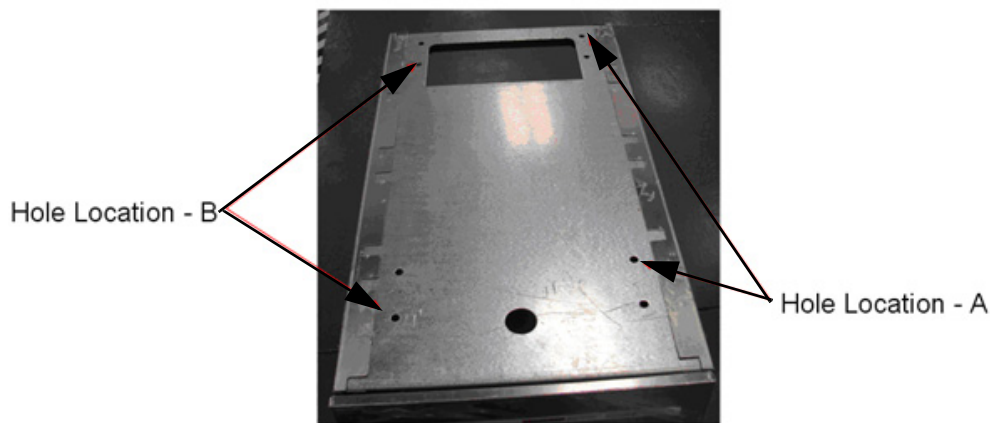


Figure 6.

Table 2.


| | | |
|------------|--|--|
| <p>8.</p> | <p>Use the four (4) hex bolts and washers to secure the Viper machine to the cart. Use a 3/4" socket with ratchet to tighten the bolts.</p> |  |
| <p>9.</p> | <p>Connect the syrup lines, CO2 line, and water line per the Viper Installation Manual. Below is a table showing tube connection. Make sure all connections are tight and there are no leaks! Refer Table 3.</p> | |
| <p>10.</p> | <p>It may be necessary to adjust the regulators. The following table shows the starting pressure of each regulator. Refer to the figure below for the location of the regulators.</p> | |

Figure 7.

Table 3.

| Tube Labels | Description | Note |
|-----------------|---------------------|--|
| CO ₂ | CO ₂ In | CO ₂ line supplied to cart. |
| CO ₂ | CO ₂ Out | CO ₂ line to Viper machine |
| S1 | BIB Flavor 1 | Bottom shelf of cart |
| S2 | BIB Flavor 2 | Top shelf of cart |

Table 4.

| Regulator Description | Recommended Pressure | Maximum Pressure | |
|-----------------------|----------------------|------------------|--|
| BIB Pumps | 75 psig | 90 psig | <p>⚠ WARNING: Do not exceed 90 psig. This may cause damage to the BIB pump.</p> |
| Viper Machine | 75 psig | | |

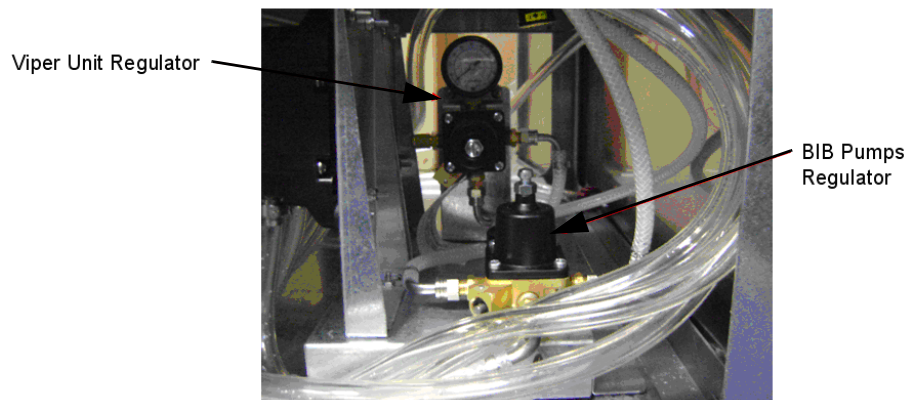


Figure 8.